

4

3

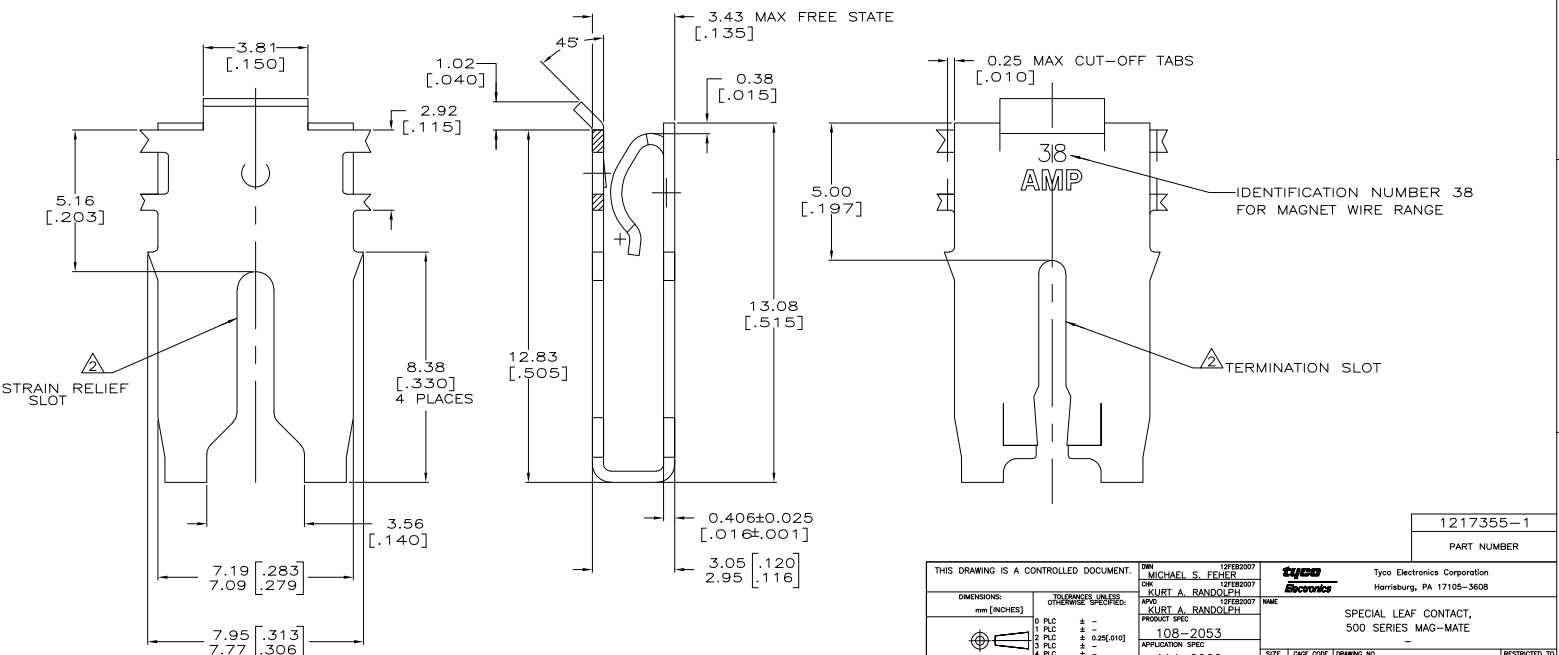
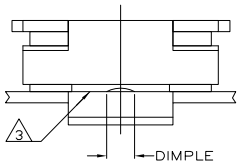
2

1

THIS DRAWING IS UNPUBLISHED. RELEASED FOR PUBLICATION
 © COPYRIGHT BY TYCO ELECTRONICS CORPORATION. ALL RIGHTS RESERVED.

LOC	DIST	REVISIONS			
F	LTR	DESCRIPTION	DATE	BY	APP'D
AF	50	B1	CREATED PER ECR-07-002951	12FEB07	MF KR

- 1 CONTINUOUS STRIP ON REELS WITH TERMINALS LOCATED ON $10.4 \pm 0.08 [4.10 \pm 0.03]$ CENTERS.
- △ SLOTTED ACCEPTS 1.29-1.45mm [#16-#15] AWG COPPER MAGNET WIRE. 2 WIRES OF THE SAME SIZE MAX PER SLOT.
- △ CONTACT LEAF ACCEPTS 0.81[.032] THICK POKE-IN TAB, (REFERENCE TAB DRAWING 1217324-1).
- △ 0.002032 [.000080] MIN TIN PLATE OVER 0.00127 [.000050] MIN NICKEL UNDERPLATE.



1217355-1
PART NUMBER

THIS DRAWING IS A CONTROLLED DOCUMENT.		DRW: MICHAEL S. FEHLER 12FEB2007	Tyco Electronics Corporation Harrisburg, PA 17105-3608
DIMENSIONS: mm [INCHES]		CHK: KURT A. RANDOLPH 12FEB2007	
TOLERANCES UNLESS OTHERWISE SPECIFIED:		APPC: KURT A. RANDOLPH 12FEB2007	NAME: SPECIAL LEAF CONTACT, 500 SERIES MAG-MATE
0 P.L.C. ± .01		PRODUCT SPEC: 108-2053	APPLICATION SPEC: 114-2066
1 P.L.C. ± .02		SIZE: A2	CAGE CODE: 00779
2 P.L.C. ± .03		WEIGHT: -	DRAWING NO: 1217355
3 P.L.C. ± .04		MATERIAL: 4M BRASS	RESTRICTED TO: -
4 P.L.C. ± .05		FINISH: △	CUSTOMER DRAWING
ANGLES: -		SCALE: 10:1	SHEET: 1 of 1
REVISIONS: -		REV: B1	

AMP 1471-9 REV 31MM2000

1217355

A