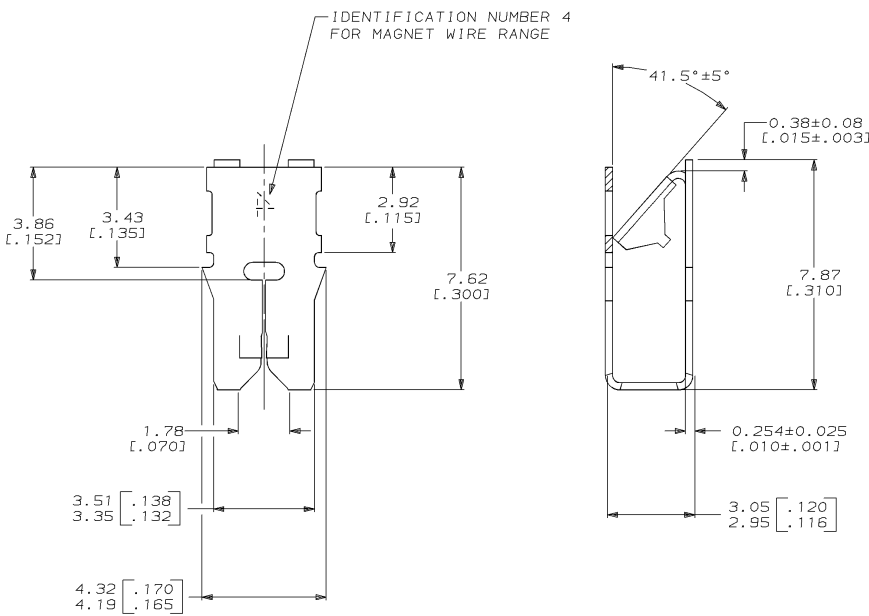
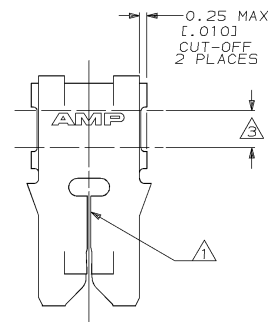
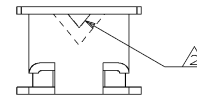


DRAWING MADE IN THIRD ANGLE PROJECTION
 THIS DRAWING IS UNPUBLISHED. RELEASED FOR PUBLICATION .19
 © COPYRIGHT 19 BY AMP INCORPORATED. ALL INTERNATIONAL RIGHTS RESERVED.

LOC		DIST		ZONE		LTR		REVISIONS		DATE	APPD
AF	50	P	F					0	DRAWN INTO CAD PER 0710-0568-94	14/JAN/95	MF/NN

- ① SLOT ACCEPTS 0.18-0.23mm [#33-#31] AWG COPPER MAGNET WIRE. 2 WIRES OF THE SAME SIZE PER SLOT.
- ② POKE-IN ACCEPTS A 0.50-0.90mm² [#20-#18] AWG SOLID OR FUSED STRANDED LEAD WIRE.
- ③ GREEN COLOR STRIPE APPLIED TO THIS SURFACE DURING LOOSE PIECE OPERATION TO PROVIDE COLOR CODING OF MAGNET WIRE RANGE.



THIS DRAWING IS A CONTROLLED DOCUMENT FOR AMP INCORPORATED. IT IS SUBJECT TO CHANGE AND THE CONTROLLING ENGINEERING ORGANIZATION SHOULD BE CONTACTED FOR THE LATEST REVISION.

		62527-1		PART NO	
DO NOT SCALE PRINT. UNLESS SPECIFIED DIMENSIONS IN mm [INCHES] TOLERANCES ON : 2 PLC DEC ± 0.25 [.010] 3 PLC DEC ± - ANGLES ± -		DR 14/JAN/95 MICHAEL S. FEHER	AMP Incorporated Harrisburg, PA 17105-3608		
		CHK 16/JAN/95 JEFF R. RUTH	NAME		
MATERIAL 4M BRASS		APPD 16/JAN/95 NELSON E. NEFF	TERMINAL, POKE-IN, LOOSE PIECE, MAG-MATE™		
FINISH 0.002032 [.000080] MIN TIN PER MIL-T-10727		APPD 16/JAN/95 TERRY L. SHUTTER	PRODUCT SPEC 108-2012	SIZE C	CAGE CODE 00779
		APPLICATION SPEC 114-2046	SCALE 10:1	DRAWING NO C=62527	SHEET 1 OF 1
		WEIGHT	CUSTOMER DRAWING		