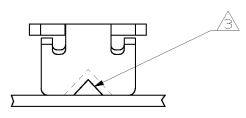
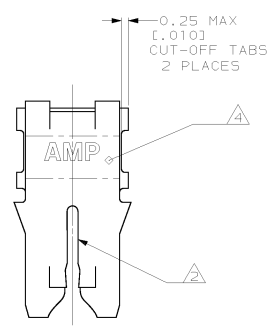
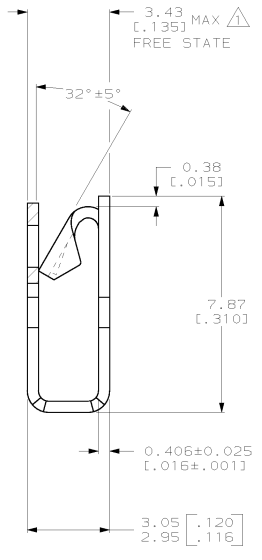
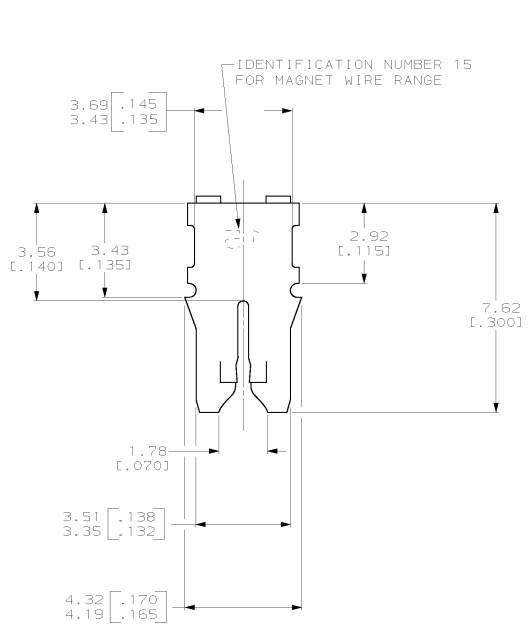


THIS DRAWING IS UNPUBLISHED. RELEASED FOR PUBLICATION. BY AMP INCORPORATED. ALL RIGHTS RESERVED.

LOC	DIST	REVISIONS			
F	LTR	DESCRIPTION	DATE	ENR	APPD
0	-		-	-	-



- ⚠ DIMENSION APPLIES WITH LEAF EDGE TOUCHING CARRIER SIDE OF BOX
- ⚠ SLOT ACCEPTS 0.64-0.81mm [#22-#20] AWG COPPER MAGNET WIRE. A SINGLE WIRE ONLY.
- ⚠ POKE-IN ACCEPTS A 0.81-1.02mm² [#20-#18] AWG SOLID OR FUSED STRANDED LEAD WIRE.
- ⚠ APPLY BLACK COLORING TO THIS SURFACE DURING LOOSE PIECE OPERATION TO PROVIDE COLOR CODING OF MAGNET WIRE RANGE



62524-1
PART NUMBER

THIS DRAWING IS A CONTROLLED DOCUMENT.		DR: R. GRZYBOWSKI 21JAN09	AMP Incorporated Harrisburg, PA 17105-3608	
DIMENSIONS (mm) (INCHES)		CHK: M. S. FEHER 21JAN09	AMP	
TOLERANCES UNLESS SPECIFIED:		APP: J.M.E. NEED 21JAN09	TERMINAL, POKE-IN, LOOSE PIECE, MAG-MATE™	
0.010 ±0.005 0.015 ±0.005 0.025 ±0.010 0.050 ±0.015 0.100 ±0.025 0.150 ±0.030 0.300 ±0.060 0.500 ±0.100 1.000 ±0.200 1.500 ±0.300 2.500 ±0.500 3.000 ±0.600 4.000 ±0.800 5.000 ±1.000 6.000 ±1.200 8.000 ±1.600 10.000 ±2.000 15.000 ±3.000 20.000 ±4.000 25.000 ±5.000 30.000 ±6.000 40.000 ±8.000 50.000 ±10.000 60.000 ±12.000 80.000 ±16.000 100.000 ±20.000		PRODUCT SPEC: 108-2012 APPLICATION SPEC: 114-2046 RETWORK: -	SIZE: A2 CASE CODE: 00779 DRAWING NO: 62524	RESTRICTED TO: - SCALE: 10:1 SHEET: 1 OF 1 REV: 0
MATERIAL: 4M BRASS	FINISH: 0.0020321.0000803 MIN TFIN PER MIL-T-10727	CUSTOMER DRAWING		