

4

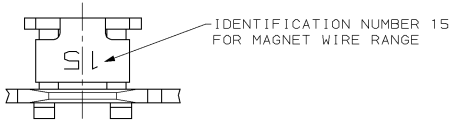
3

2

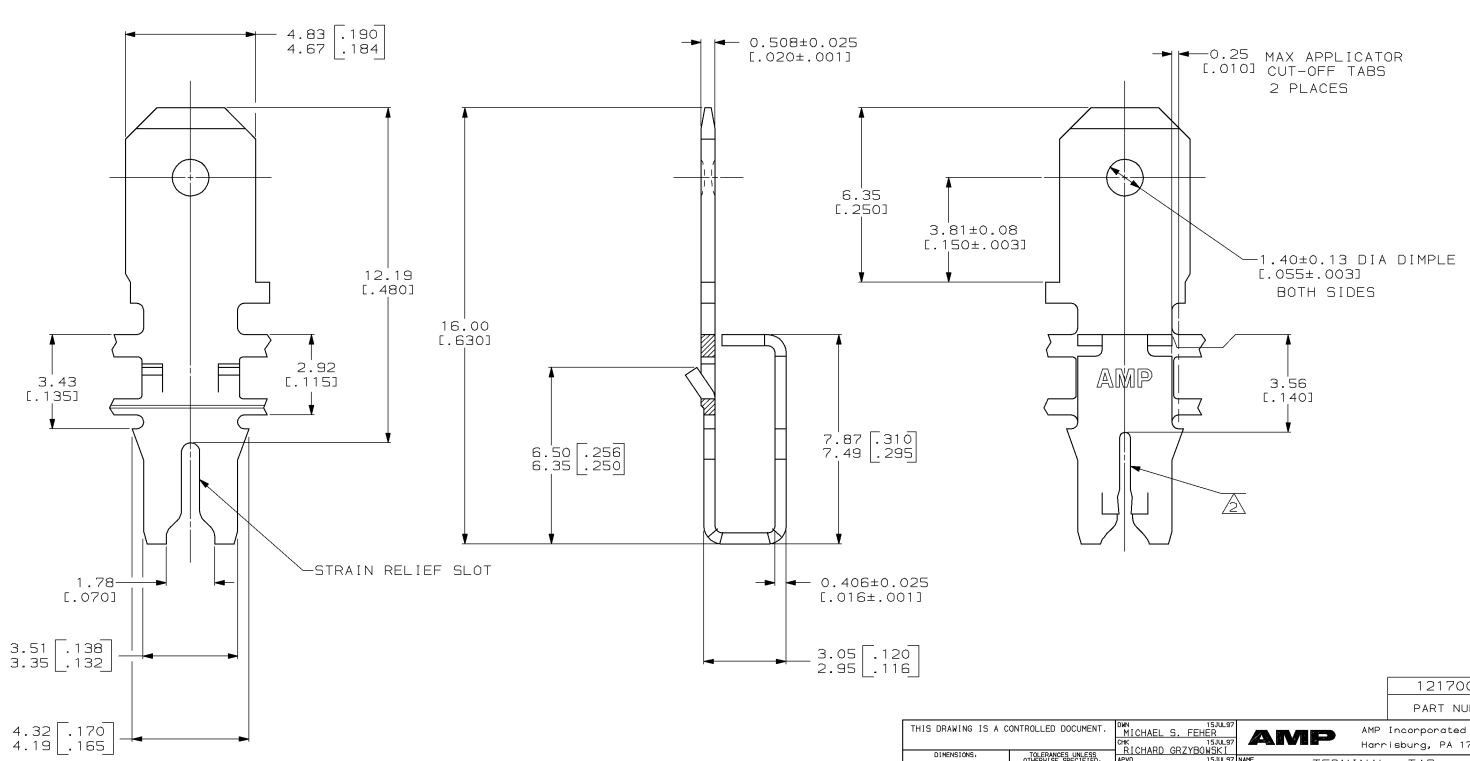
1

THIS DRAWING IS UNPUBLISHED.  
 © COPYRIGHT 19 BY AMP INCORPORATED. ALL RIGHTS RESERVED.

LOC	DIST	REVISIONS		
F	LWR	DESCRIPTION	DATE	BY
AF	50			
C		REVISE PER ECN 061A-0201-98	20.JUL.98	SU KR



1 CONTINUOUS STRIP ON REELS (SPlice FREE) WITH TERMINALS LOCATED ON 5.59±0.08 [.220±.003] CENTERS.  
 △ SLOT TERMINATES A SINGLE MAGNET WIRE ONLY.  
 COPPER RANGE: 0.54-0.81mm [#23.5-#20] AWG.



1217004-1  
 PART NUMBER

THIS DRAWING IS A CONTROLLED DOCUMENT.		DRN MICHAEL S. FENNER 15JUL97	AMP Incorporated Harrisburg, PA 17105-3608	
DIMENSIONS: mm (INCHES)		CHK RICHARD GRZYBOWSKI 15JUL97	AMP	
DESIGNER: KURT RANDOLPH		APPRO: KURT RANDOLPH 15JUL97	TERMINAL TAB, 4.75 [.187] FASTON™, MAG-MATE™	
PRODUCT SPEC: 108-2012		APPLICATION SPEC: 114-2067	SURE CASE CODE: A200779	DRAWING NO: 1217004
MATERIAL: 4M PRE-MILLED BRASS		FINISH: 0.002032 [.000083] MIN TIN PER MIL-T-10727	SCALE: 10:1	SHEET 1 OF 1
CUSTOMER DRAWING		RESTRICTED TO		