

4

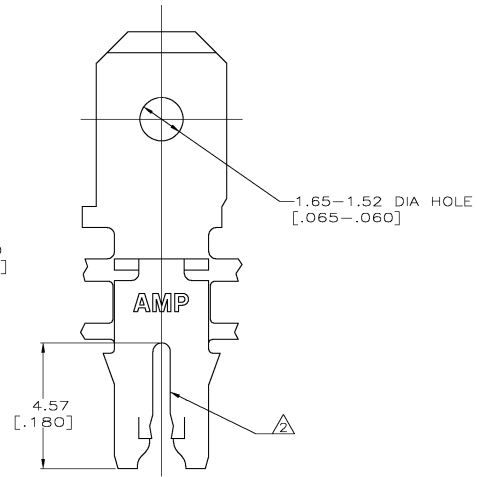
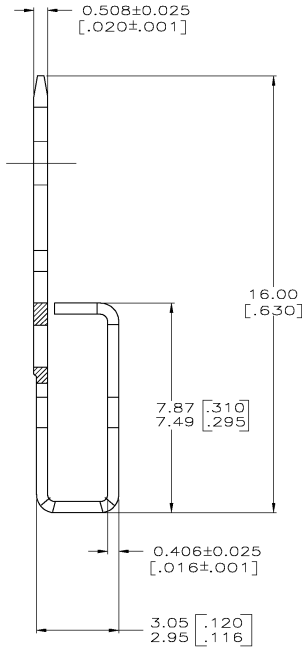
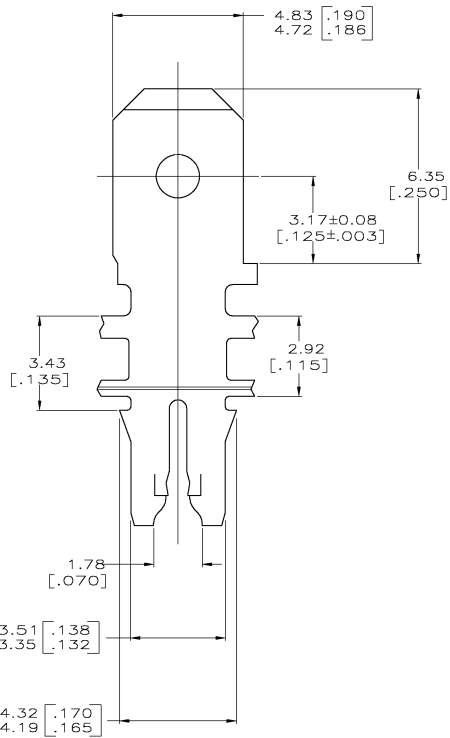
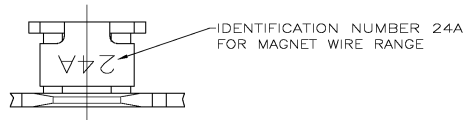
3

2

1

THIS DRAWING IS UNPUBLISHED. RELEASED FOR PUBLICATION. BY TYCO ELECTRONICS CORPORATION. ALL RIGHTS RESERVED.

LOC	DIST	REVISIONS			
P	LTR	DESCRIPTION	DATE	BY	APP'D
AF	50				
	D	REV PER 063A-0271-04	15APR04	JR	KR



- 1 CONTINUOUS STRIP ON REELS WITH TERMINALS LOCATED ON 5.59±0.08 [.220±.003] CENTERS. SLOT TERMINATES A SINGLE MAGNET WIRE ONLY. ALUMINUM RANGE: 0.97-1.22mm [#18.5-#16.5] AWG.
- 2 AFTER INSERTION INTO PLASTIC HOLDER TAB PORTION MUST BE BENT OVER 45° TO 90° OR POTTED-IN TO PREVENT PULL-OUT WHEN MATING RECEPTACLE IS DISCONNECTED.
- 3 ANVIL HEIGHT TO BE 2.29±0.13 [.090±.005]
- 4 VARNISH RESIST OVER TIN PLATE
- 5 PRELIMINARY - NOT FOR PRODUCTION

0.002032 [.000080] MIN TIN	63668-2
0.002032 [.000080] MIN TIN	63668-1
FINISH	PART NO

THIS DRAWING IS A CONTROLLED DOCUMENT.

DIMENSIONS: INCHES 0 DEC 1 DEC 2 DEC 3 DEC 4 DEC 5 DEC 6 DEC ANGLES FINISH	TOLERANCES UNLESS OTHERWISE SPECIFIED: .015 .010 .008 .005 .003 .002 .001 .0005 .0002 .0001	DWG: MICHAEL S. FEHLER 2/2/92 CHK: JEFF R. RUTH 9/4/92 APP: TERRY SHULTER 9/4/92 PRODUCT SPEC: 108-2012 APPLICATION SPEC: 114-2046 HEIGHT: - MATERIAL: H03 PRE-MILLED BRASS FINISH: SEE TABLE	Tyco Electronics Corporation Harrisburg, Pa 17105-3608 TERMINAL, TAB, 4.75 [.187] FASTON, MAG-MATE SEE CASE CODE DRAWING NO: A2 00779 C-63668 SCALE: 10:1 SHEET 1 OF 1 REV D
--	---	--	--

AMP 1421-9 REV 31MAR2000