

4

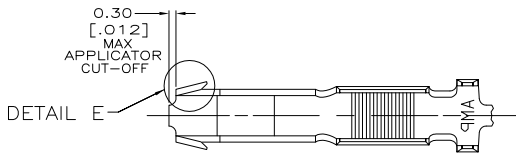
3

2

1

THIS DRAWING IS UNPUBLISHED. RELEASED FOR PUBLICATION
 © COPYRIGHT BY TYCO ELECTRONICS CORPORATION. ALL RIGHTS RESERVED.

LOC		DIBT		REVISIONS			
F	LTR	DATE	BY	APP'D	DESCRIPTION	DATE	BY
AF	50						
					REVISED PER ECR-05-018642	26APR08	HMR GP

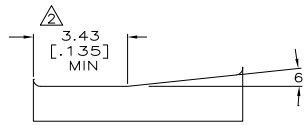
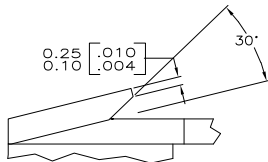
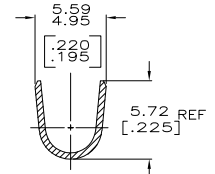
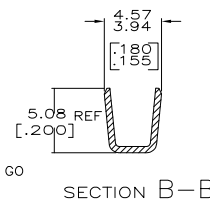
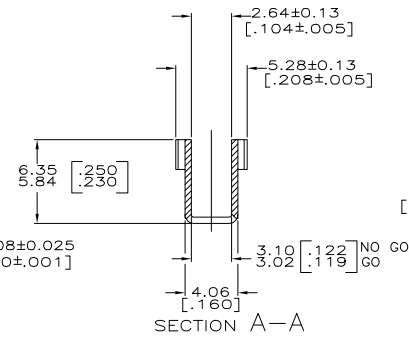
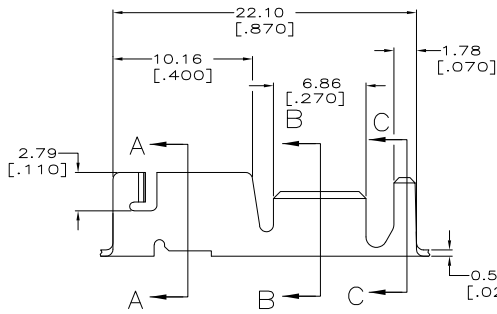


1 CONTINUOUS STRIP ON REELS WITH TERMINALS LOCATED ON 23.75±0.08 [.935±.003] CENTERS.

2 MEASURE CRIMP HEIGHT IN THIS AREA.

3 FORMULA TO CALCULATE CRIMP HEIGHT:

$$X = \frac{Y + 15200}{238100} \quad Y = CMA \quad X = \text{CRIMP HEIGHT}$$



DETAIL E
SCALE 20:1

CRIMP CONFIGURATION

2.29-4.32 DIA [.090-.170]	4000-8500 CMA	1217672-1
INSULATION RANGE	WIRE RANGE	PART NUMBER

THIS DRAWING IS A CONTROLLED DOCUMENT		DRW: J.R. RUTH	29AJAN01	Tyco Electronics Corporation Harrisburg, PA 17105-3608
DIMENSIONS: mm [INCHES]		CHK: G. PORTA	29AJAN01	
TOLERANCES UNLESS OTHERWISE SPECIFIED:		APP: G. PORTA	29AJAN01	RECEPTACLE, CLUSTER PIN, AMPLIVAR™ 3.18[.125] DIA
0 PLC ± .005		PRODUCT SPEC: 108-2008		
1 PLC ± .005		APPLICATION SPEC: 114-2019		RESTRICTED TO
2 PLC ± .005		WEIGHT: -		
3 PLC ± .005				
4 PLC ± .005				
ANGLES ± .5°				
MATERIAL: H03 PHOSPHOR BRONZE	FINISH: POST TIN	SIZE: A2	CAGE CODE: 00779	DRAWING NO: C=1217672
CUSTOMER DRAWING		SCALE: 5:1	SHEET: 1 of 1	REV: C