

4

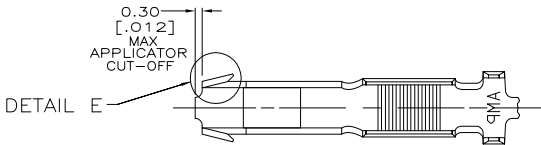
3

2

1

THIS DRAWING IS UNPUBLISHED. RELEASED FOR PUBLICATION
 © COPYRIGHT BY TYCO ELECTRONICS CORPORATION. ALL RIGHTS RESERVED.

LOC	DIST	REVISIONS		
F	LTR	DESCRIPTION	DATE	BY
AF	50			
		C	REVISED PER ECR-05-018642	26APR06 HMR GP

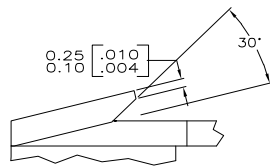
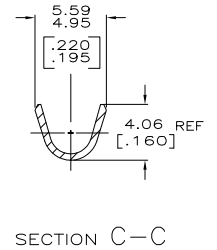
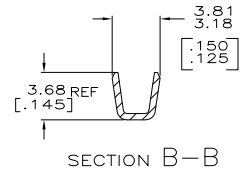
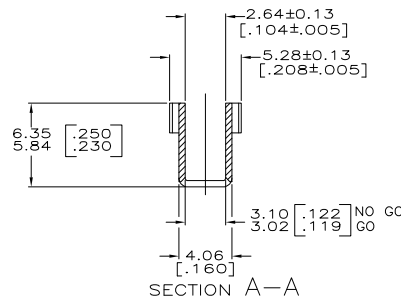
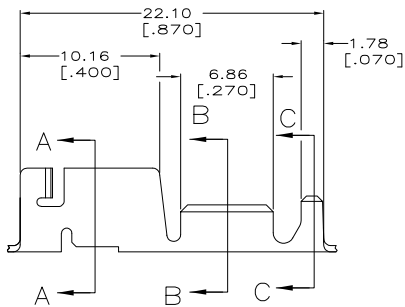


- CONTINUOUS STRIP ON REELS WITH TERMINALS LOCATED ON 23.75 [.935] CENTERS.
- MEASURE CRIMP HEIGHT IN THIS AREA.
- FORMULA TO CALCULATE CRIMP HEIGHT:

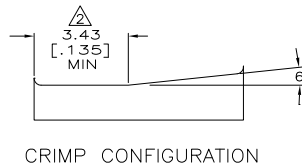
$$X = \frac{Y + 10100}{187500}$$

$$Y = \text{CMA}$$

$$X = \text{CRIMP HEIGHT}$$



DETAIL E
SCALE 20:1



1.90-3.18 DIA [.075-.125]	1500-4200 CMA	1217671-1
INSULATION RANGE	WIRE RANGE	PART NUMBER

THIS DRAWING IS A CONTROLLED DOCUMENT.		DRW: J.R. RUTH 29AJAN01	Tyco Electronics Corporation	
DIMENSIONS: mm [INCHES]		CHK: G. PORTA 29AJAN01	Harrisburg, PA 17105-3608	
TOLERANCES UNLESS OTHERWISE SPECIFIED:		APP: G. PORTA 29AJAN01	RECEPTACLE, CLUSTER PIN, AMPLIVAR™ 3.18[.125] DIA	
0 PLC ± .010	1 PLC ± .005	PRODUCT SPEC: 108-2008	SIZE: A2	CAGE CODE: 00779
2 PLC ± .025 (M19)	3 PLC ± .015	APPLICATION SPEC: 114-2019	DRAWING NO: C=1217671	RESTRICTED TO: -
4 PLC ± .010	ANGLES ± .5	WEIGHT: -	SCALE: 5:1	SHEET: 1 of 1
MATERIAL: H03 PHOSPHOR BRONZE	FINISH: POST TIN	CUSTOMER DRAWING	REV: C	

AMP 1471-9 REV 31MM2000

1217671

A