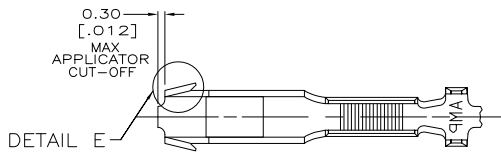


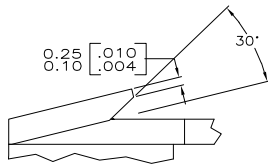
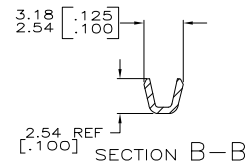
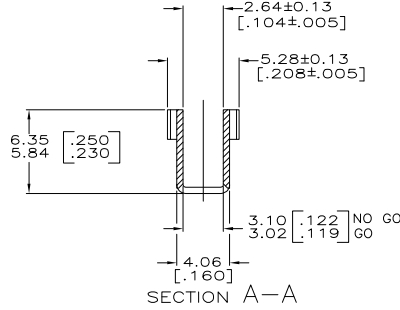
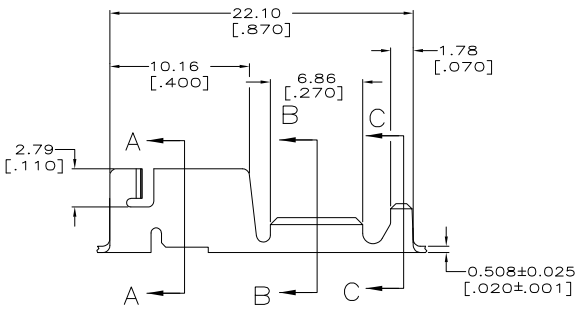
THIS DRAWING IS UNPUBLISHED. RELEASED FOR PUBLICATION
 © COPYRIGHT BY TYCO ELECTRONICS CORPORATION. ALL RIGHTS RESERVED.

LOC		DIBT		REVISIONS		
F	LTR	DESCRIPTION	DATE	BY	APP'D	
AF	50					
	C	REVISED PER ECR-05-018642	26APR06	HMR	GP	

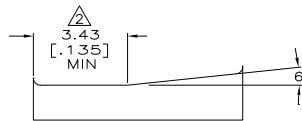


- CONTINUOUS STRIP ON REELS WITH TERMINALS LOCATED ON 23.75 [.935] CENTERS.
- MEASURE CRIMP HEIGHT IN THIS AREA.
- FORMULA TO CALCULATE CRIMP HEIGHT:

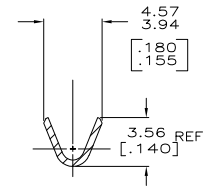
$$x = \frac{Y + 6900}{151900}$$
 Y = CMA
 X = CRIMP HEIGHT



DETAIL E
SCALE 20:1



CRIMP CONFIGURATION



SECTION C-C

1.52-2.54 [.060-.100] DIA	400-1600 CMA	1217670-1
INSULATION RANGE	WIRE RANGE	PART NUMBER

THIS DRAWING IS A CONTROLLED DOCUMENT.		DRW: J.R. RUTH 05/AN/00	Tyco Electronics Corporation
DIMENSIONS: mm [INCHES]		CHK: PETE DESANTIS 05/AN/00	Harrisburg, PA 17105-3608
TOLERANCES UNLESS OTHERWISE SPECIFIED:		APP: PETE DESANTIS	Tyco Electronics
0 P.L.C.	±	PRODUCT SPEC:	RECEPTACLE, CLUSTER PIN, AMPLIVAR™ 3.18[.125] DIA
1 P.L.C.	±	APPLICATION SPEC:	
2 P.L.C.	± 0.25 (.010)	114-2019	SIZE: A2
3 P.L.C.	±	WEIGHT:	CAGE CODE: 00779
4 P.L.C.	±		DRAWING NO: 1217670
ANGLES:	±		RESTRICTED TO: -
MATERIAL: HO3 PHOSPHOR BRONZE	FINISH: POST TIN	CUSTOMER DRAWING	SCALE: 5:1 SHEET: 1 of 1 REV: C