

4

3

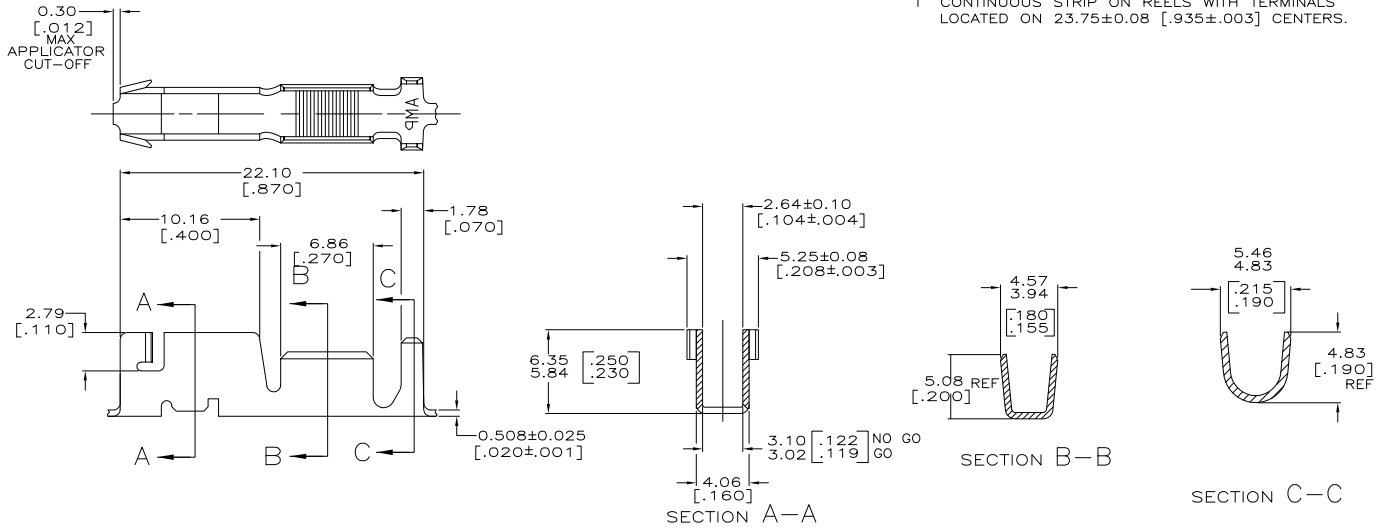
2

1

THIS DRAWING IS UNPUBLISHED. RELEASED FOR PUBLICATION
 BY TYCO ELECTRONICS CORPORATION. ALL RIGHTS RESERVED.

LOC	DIST	REVISIONS		
F	LTR	DESCRIPTION	DATE	BY
AF	50			
F		REVISED PER ECR-05-018642	24APR06	HMR GP

1 CONTINUOUS STRIP ON REELS WITH TERMINALS LOCATED ON 23.75±0.08 [.935±.003] CENTERS.



3.81 MAX DIA [.150 MAX DIA]	4000-8500 CMA	1217173-1
INSULATION RANGE		PART NUMBER

THIS DRAWING IS A CONTROLLED DOCUMENT.		DATE: 01JUL1999	BY: MICHAEL S. FEHR	TYCO ELECTRONICS CORPORATION
DRAWN BY: PETE DESANTIS		DATE: 06JUL1999	CHK: PETE DESANTIS	HARRISBURG, PA 17105-3608
DESIGNED BY: PETE DESANTIS		DATE: 06JUL1999	APP: PETE DESANTIS	RECEPTACLE, CLUSTER PIN, AMPLIVAR™ 3.18[.125] DIA
MATERIAL: H03 PHOSPHOR BRONZE		FINISH: POST TIN	APPLICATION SPEC: 114-2019	SIZE: A2
DIMENSIONS: mm [INCHES]		TOLERANCES UNLESS OTHERWISE SPECIFIED:	WEIGHT: -	CAGE CODE: 00779
0 PLC	±			DRAWING NO: 1217173
1 PLC	±			RESTRICTED TO: -
2 PLC	±			
3 PLC	±	0.25 (.010)		
4 PLC	±			
ANGLES	±			
MATERIAL: H03 PHOSPHOR BRONZE		FINISH: POST TIN	APPLICATION SPEC: 114-2019	WEIGHT: -
CUSTOMER DRAWING		SCALE: 5:1	SHEET: 1 of 1	REV: F

AMP 1471-9 REV 31MM2000

1217173

A