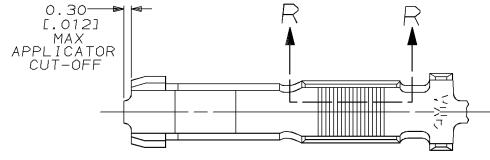
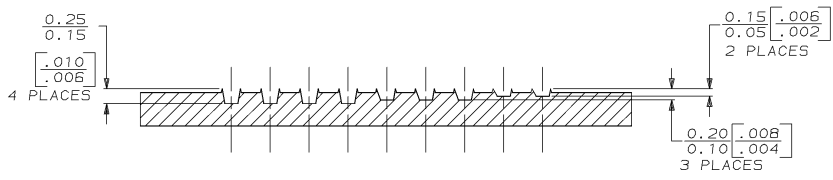
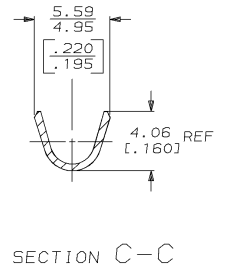
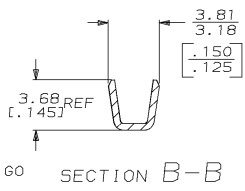
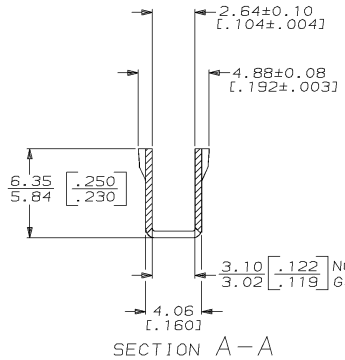
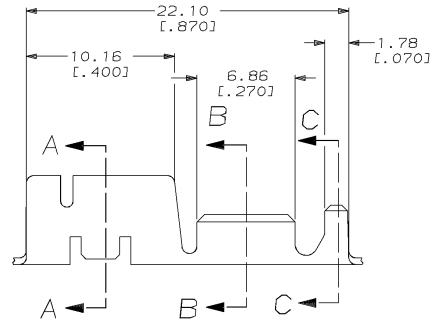


DRAWING MADE IN THIRD ANGLE PROJECTION
 THIS DRAWING IS UNPUBLISHED. RELEASED FOR PUBLICATION .19
 © COPYRIGHT 19 BY AMP INCORPORATED. ALL INTERNATIONAL RIGHTS RESERVED.

REVISIONS								
LOC	DIST	P	F	ZONE	LTR	DESCRIPTION	DATE	APPD
AF	50				M	REV PER 0710-0111-95	20/MAR/95	PF/DD



1 CONTINUOUS STRIP ON REELS WITH TERMINALS LOCATED ON 23.75 [.935] CENTERS.



1.90-3.18 DIA [.075-.125]	1500-4200 CMA	63454-1
INSULATION RANGE	WIRE RANGE	PART NO

DO NOT SCALE PRINT. UNLESS SPECIFIED DIMENSIONS IN MM (INCHES) TOLERANCES ON: 2 PLC DEC ± 0.25 (.010) 3 PLC DEC ± ANGLES ±	DR 11/12/87 MS FENER CHK 11/17/87 G YETTER APPD 11/17/87 J SWARTZ	AMP AMP INCORPORATED Manufacturing, Pa. 17105	
MATERIAL 0.51 [.020] #3 HARD PHOSPHOR BRONZE	APPD 11/17/87 C ATHERTON PRODUCT SPEC	NAME RECEPTACLE, CLUSTER PIN, AMPLIVAR, 3.18 [.125] DIA	
FINISH POST TIN	APPLICATION SPEC	SIZE C	FSCM NO 00779
WEIGHT		DRAWING NO 63454	SHEET 1 OF 1

METRIC