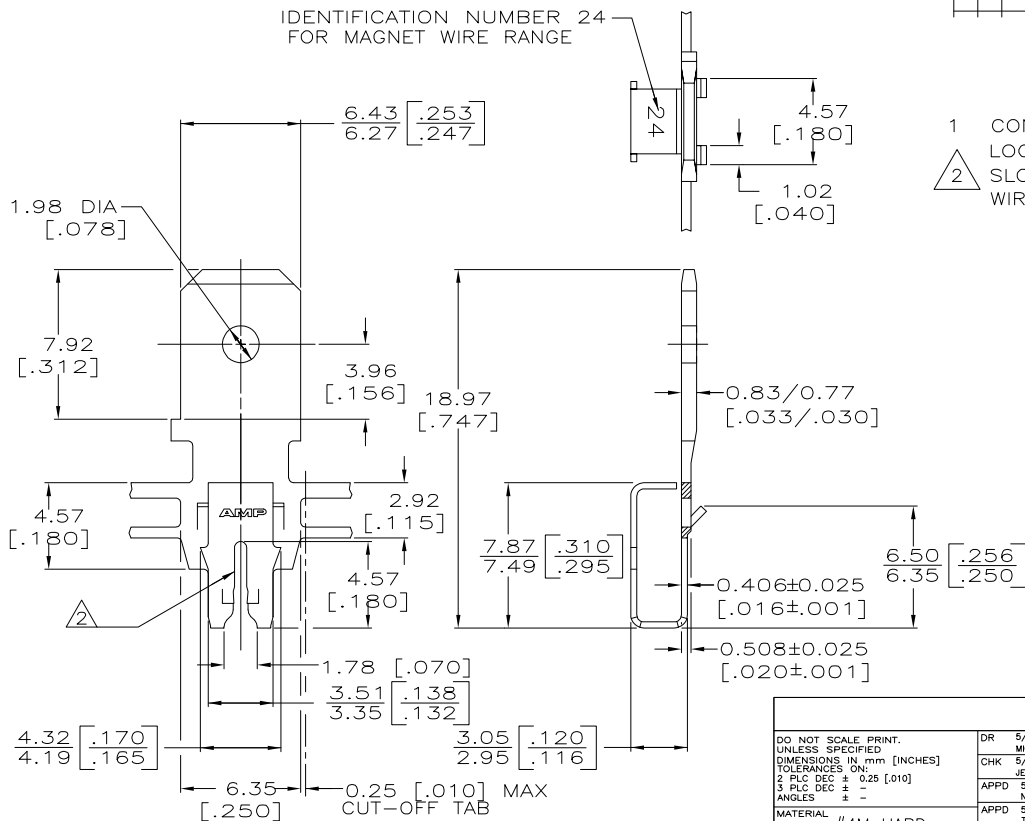


DRAWING MADE IN THIRD ANGLE PROJECTION

THIS DRAWING IS UNPUBLISHED. RELEASED FOR PUBLICATION
 © COPYRIGHT 19 BY AMP INCORPORATED. ALL INTERNATIONAL RIGHTS RESERVED.

LOC		DIST		REVISIONS				DATE	APPD
ZONE	LTR	DESCRIPTION	DATE	APPD					
AF	50								
		B	REV PER ECR 06-010492	02OCT06	JR.KR				

IDENTIFICATION NUMBER 24
 FOR MAGNET WIRE RANGE



- 1 CONTINUOUS STRIP ON REELS WITH TERMINALS LOCATED ON 8.38 [.330] CENTERS.
- 2 SLOT TERMINATES SINGLE COPPER MAGNET WIRE RANGE: 0.91-1.13mm [#19-#17] AWG

63614-1

PART NO

DO NOT SCALE PRINT.
 UNLESS SPECIFIED
 DIMENSIONS IN mm [INCHES]
 TOLERANCES ON:
 2. PLC DEC ± 0.25 [.010]
 3. PLC DEC ± -
 ANGLES ± -
 MATERIAL #4M HARD PRE-MILLED BRASS
 FINISH 0.002032[.000080] MIN TIN PER MIL-T-10727

DR 5/9/91
 MICHAEL S. FEHER
 CHK 5/13/91
 JEFF R. RUTH
 APPD 5/13/91
 NELSON E. NEFF
 APPD 5/13/91
 TERRY L. SHUTTER
 PRODUCT SPEC -
 APPLICATION SPEC 114-2094
 WEIGHT -

AMP AMP Incorporated Harrisburg, PA 17105-3608		NAME TAB, 6.35 [.250] FASTON,™ MAG-MATE™	
SIZE B	CAGE CODE 00779	DRAWING NO 63614	
SCALE 5:1	SHEET 1 OF 1		

AMP 1470-15 REV 11-89 Transferred 020830,171012 (YMMDD.HHMMSS) from
 Comptel Division, Inc., Medusa Revision 12.2.01

CUSTOMER DRAWING