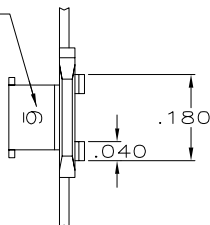


DRAWING MADE IN THIRD ANGLE PROJECTION

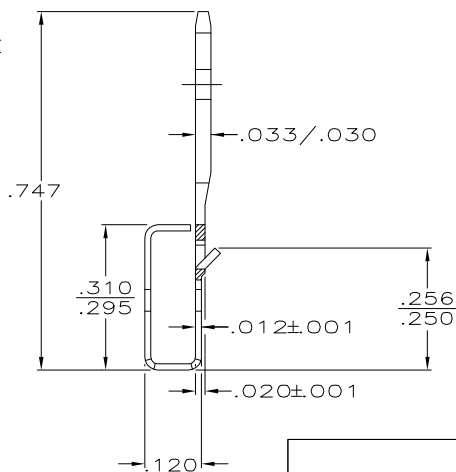
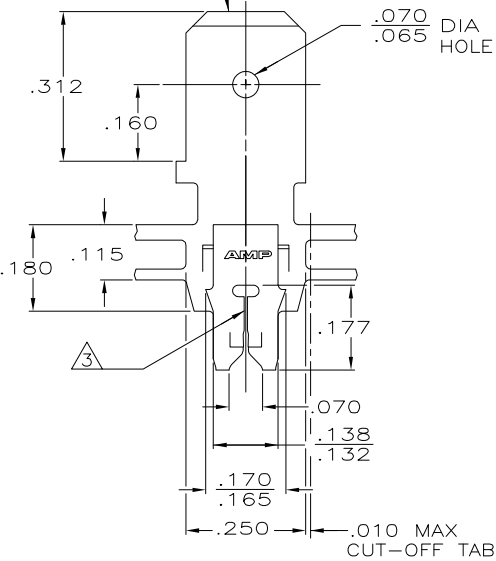
THIS DRAWING IS UNPUBLISHED. RELEASED FOR PUBLICATION .19
 © COPYRIGHT 19 BY AMP INCORPORATED. ALL INTERNATIONAL RIGHTS RESERVED.

LOC	DIST	P	F	ZONE	LTR	DESCRIPTION	DATE	APPD
AF	50				E	REV PER ECR 06-010492	020CT06	JR/GP

IDENTIFICATION NUMBER FOR MAGNET WIRE RANGE



FITS .250 SERIES FASTON RECEPTACLE



- 1 MAG-MATE CAVITY SPECIFICATION.
- 2 CONTINUOUS STRIP ON REELS WITH TERMINALS LOCATED ON $.330 \pm .003$ CENTERS.
- 3 SLOT TERMINATES EITHER SINGLE OR DOUBLE MAGNET WIRES OF THE SAME TYPE AND SIZE, COPPER RANGE IS #30-#27 AWG.

082 PRE-MILLED BRASS	63499-2
4M PRE-MILLED BRASS	63499-1
FINISH	PART NO

DO NOT SCALE PRINT. UNLESS SPECIFIED DIMENSIONS IN INCHES TOLERANCES ON: 2. PLC DEC ± .010 3. PLC DEC ± .010 ANGLES ± -	DR M.S. FEHER 8/30/88	AMP AMP INCORPORATED Harrisburg, Pa. 17105	NAME TAB, 250 FASTON,™ MAG-MATE™
	CHK JR RUTH 7/7/88		
	APPD N.E. NEFF 7/8/88		
	APPD C.G. ATHERTON 7/8/88		
MATERIAL SEE TABLE	PRODUCT SPEC 108-2012	SIZE B	FSCM NO 00779
FINISH .000080 MIN TIN	APPLICATION SPEC 114-2094	SCALE 5:1	DRAWING NO 63499
	WEIGHT -		SHEET 1 OF 1

AMP 1470-15 REV 3-87
 Tronley/020B30.185630 (YMMDD.HHMMSS) from
 Compersivision, Inc., Medusa Revision 12.2.01

CUSTOMER DRAWING