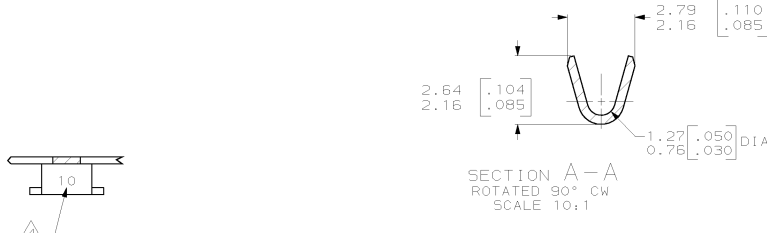
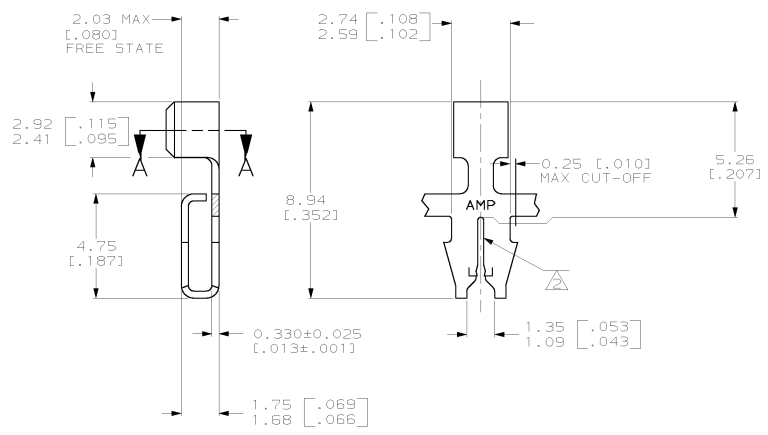
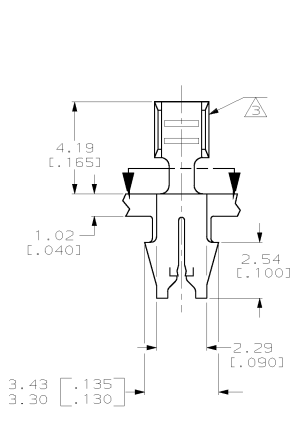


THIS DRAWING IS UNPUBLISHED. RELEASED FOR PUBLICATION  
 (C) COPYRIGHT IS BY AMP INCORPORATED. ALL RIGHTS RESERVED.

LOC	DIST	REV	DESCRIPTION	DATE	BY	APP'D
AF	50	F	REVISED PER EC 061A-0170-99	13.JUL.99	SDW	KAR



- 1 CONTINUOUS STRIP ON REELS (NO SPLICES) WITH TERMINALS LOCATED ON 8.38±0.08 [.330±.003] CENTERS.
- △ SLOT ACCEPTS 0.40-0.51mm [#26-#24] AWG COPPER MAGNET WIRE 2 WIRES MAX OF THE SAME SIZE PER SLOT.
- △ WIRE BARREL ACCEPTS 0.3-1.0mm² [#22-#18] AWG LEAD WIRE.
- △ IDENTIFICATION NUMBER 10 FOR WIRE SLOT SIZE.
- △ 0.00203 [.000080]-0.00381 [.000150] TIN PLATE OVER  
 0.00254 [.000100]-0.00127 [.000050] NICKEL UNDERPLATE.



3.56 [.140]	F	1.78 [.070]	1.08 [.043] 1.18 [.047] 1.32 [.052]	0.4# [22] 0.5# [20] 0.8# [18]
STRIP LENGTH ±.015	TYPE	WIDTH	HEIGHT	WIRE
WIRE BARREL CRIMP				

1217146-1  
 PART NUMBER

THIS DRAWING IS A CONTROLLED DOCUMENT.		DWG: MICHAEL S. FEHNER 310481999 DTP: JEFF E. BUTH 314581999 APP: JEFF A. RANDOLPH 09481999	<b>AMP</b> AMP Incorporated Harrisburg, PA 17105-3608
DIMENSIONS: mm (INCHES) DIMENSIONS UNLESS OTHERWISE SPECIFIED: D: PLG ±.010 R: PLG ±.010 B: PLG ±.010 W: PLG ±.010 H: PLG ±.010 H: PLG ±.010 H: PLG ±.010 H: PLG ±.010	PRODUCT SPEC: 108-2012 APPLICATION SPEC: 114-2069 WEIGHT: - MATERIAL: H04 BRASS FINISH: -	TITLE: TERMINAL, F-CRIMP, 187 SERIES MAG-MATE™ CASE CODE: 1217146 SCALE: 8:1 SHEET: 1 OF 1 REV: A	RESTRICTED TO: -