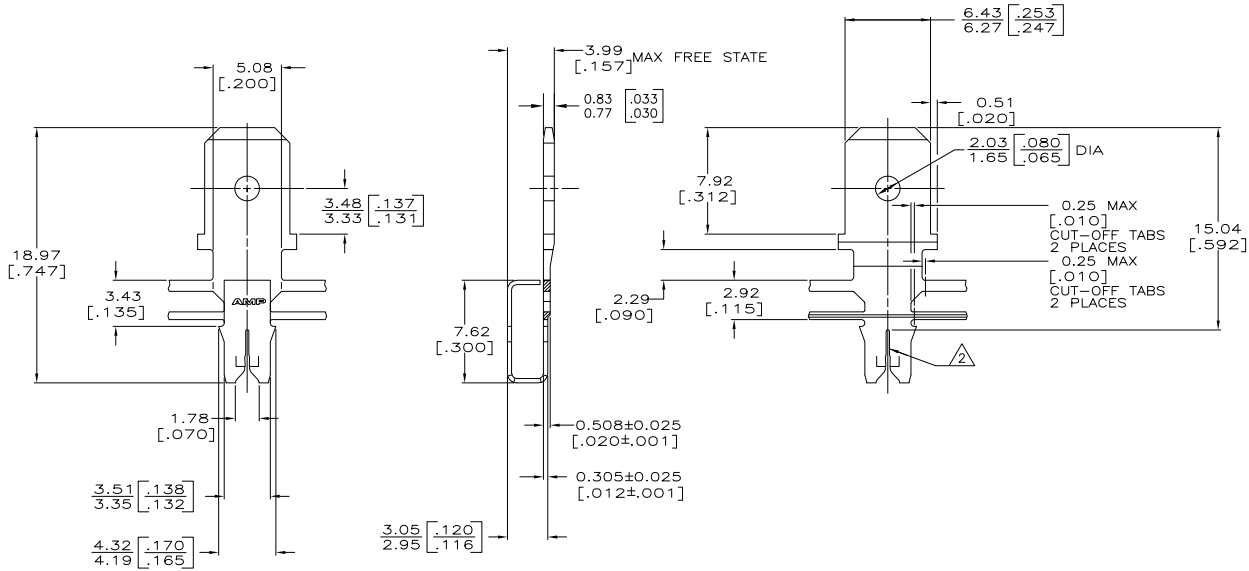


THIS DRAWING IS UNPUBLISHED. RELEASED FOR PUBLICATION. COPYRIGHT BY TYCO ELECTRONICS CORPORATION. ALL RIGHTS RESERVED.

LOC	QTY	REVISIONS			
TR	LR	DESCRIPTION	DATE	DR	APP
AF	50	REVISED PER ECR-06-010412		HMR	KR



- CONTINUOUS STRIP ON REELS WITH TERMINALS LOCATED ON 8.38 ± 0.08 [.330 ± .003] CENTERS.
- SLOT TERMINATES EITHER SINGLE OR DOUBLE MAGNET WIRES OF THE SAME TYPE AND SIZE, COPPER RANGE IS 0.32–0.50mm [#28–#24] AWG.
- AFTER INSERTION INTO PLASTIC HOLDER TAB PORTION MUST BE BENT OVER 45° TO 90° OR POTTED-IN TO PREVENT PULL-OUT WHEN MATING RECEPTACLE IS DISCONNECTED.
- CAVITY SPECIFICATION TO BE MODIFIED PER CUSTOMER REQUIREMENTS.



63607-1
PART NO

THIS DRAWING IS A CONTROLLED DOCUMENT.		DRN MICHAEL S. FEHER 2/27/91	Tyco Electronics Corporation Harrisburg, PA 17105-3608	
DIMENSIONS: TO DRAWING UNLESS OTHERWISE SPECIFIED:		DRN JEFF R. RUTH 3/1/91	Part No. 63607-1	
mm [INCHES]		APP NELSON E. NEFF 3/1/91	TAB, 6.35 [.250] FASTON, [™] MAG-MATE [™]	
TOLERANCES:		PRODUCED SPEC 108-2012	SIZE A2	
Ø FRACTIONAL DECIMAL		APPLICATION SPEC 114-2046	CASE CODE 00779	
MATERIAL #2 HARD PER-MILLED BRASS 6-020237 [000080] MIN TN PER MIL-1-10727		WEIGHT -	DRAWING NO 63607	
FINISH		CUSTOMER DRAWING	RESTRICTED TO -	
		SCALE 5:1	SHEET 1 of 1 REV C	

AMP 1471-B REV 31MMR2000

63607

A