

4

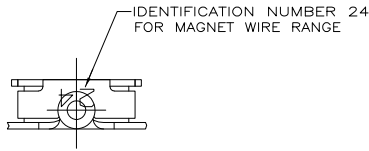
3

2

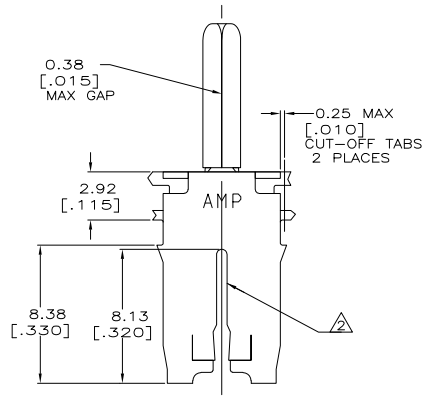
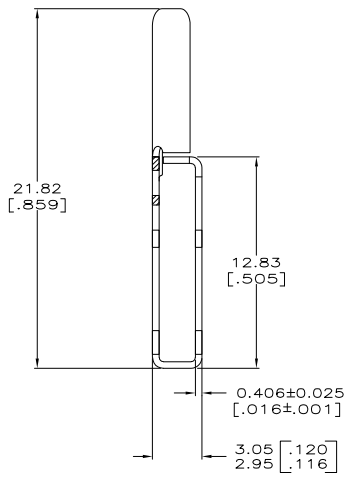
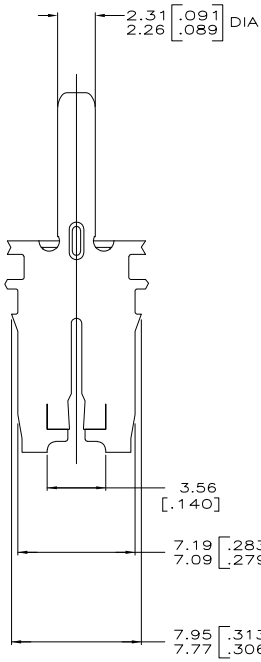
1

THIS DRAWING IS UNPUBLISHED. RELEASED FOR PUBLICATION
 © COPYRIGHT BY TYCO ELECTRONICS CORPORATION. ALL RIGHTS RESERVED.

LOC		DIST		REVISIONS			
P	LTR	DESCRIPTION	DATE	MIN	APD		
F		REVISED PER 063A-0203-05		6APR05	MF	KR	



- 1 CONTINUOUS STRIP ON REELS WITH TERMINALS LOCATED ON 8.38±0.08 [.330±.003] CENTERS. SLOT ACCEPTS 0.86-1.15mm [#19.5-#17] AWG COPPER MAGNET WIRE. 2 WIRES OF THE SAME SIZE MAX PER SLOT.
- △ VARNISH RESIST OVER 0.002032 [.000080] MIN TIN
- △ PRELIMINARY - NOT FOR PRODUCTION.



082 BRASS	△ 63278-2
4M BRASS	63278-1
MATERIAL	PART NUMBER

THIS DRAWING IS A CONTROLLED DOCUMENT.		DWG: MICHAEL S. FEHLER 104P997 CHK: JEFF R. RUTH 114P997 APD: NELSON E. NEFF 144P997 PRODUCT SPEC: 108-2053 APPLICATION SPEC: 114-2066 HEIGHT: - FINISH: -	Tyco Electronics Tyco Electronics Corporation Harrisburg, Pa 17105-3608 PIN, 2.29[.090] DIA, 500 SERIES MAG-MATE	SIZE: A2 CHG CODE: 00779 DRAWING NO: C-63278 RESTRICTED TO: -
DIMENSIONS: INCHES	0 PLG ± - 1 PLG ± - 2 PLG ± ± 0.25(010) 3 PLG ± - 4 PLG ± - ANGLES ± - FINISH -	CUSTOMER DRAWING SCALE: 6:1 SHEET: 1 OF 1 REV: F		

AMP 1471-9 REV 31MM2000

63278

A