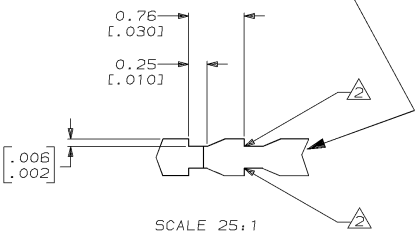
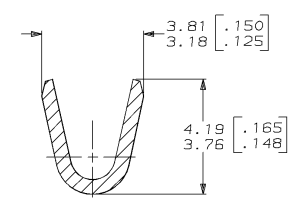
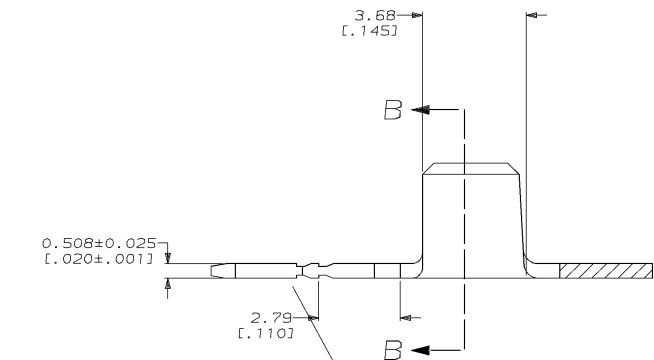
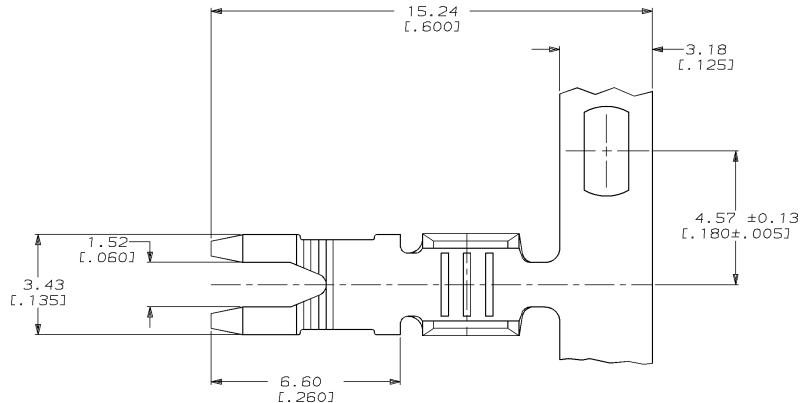


DRAWING MADE IN THIRD ANGLE PROJECTION  
 THIS DRAWING IS UNPUBLISHED. RELEASED FOR PUBLICATION 1984  
 © COPYRIGHT 1984 BY AMP INCORPORATED. ALL INTERNATIONAL RIGHTS RESERVED.

LOC		DIST		ZONE		LTR		REVISIONS		DATE	APPD
AF	50	P	F					A	RELEASE PER 0710-0543-94	21/OCT/94	PF/MF



1 CONTINUOUS STRIP ON REELS  
 2 FOR OPTIMUM RETENTION IN POKE-IN TYPE MAG-MATE TERMINALS, ONE OF THE SERRATIONS, AS SHOWN, MUST BE ENGAGED WITH THE EDGE OF THE LEAF

0.8-2.0 mm <sup>2</sup> [18 - 14] AWG		63775-1	
WIRE RANGE		PART NO	
<b>AMP</b> AMP Incorporated Harrisburg, PA 17105-3608			
NAME <b>TAB, POKE-IN, MAG-MATE™</b>			
DO NOT SCALE PRINT. UNLESS SPECIFIED DIMENSIONS IN mm [INCHES] TOLERANCES ON : 2 PLC DEC ± 0.25 (.010) 3 PLC DEC ± - ANGLES ± -	DR 08/FEB/94 MICHAEL S. FEHER	SIZE CAGE CODE 00779	DRAWING NO 63775
MATERIAL 082 BRASS	CHK 03/FEB/94 JEFF R. RUTH	SCALE 10:1	SHEET 1 OF 1
FINISH 0.002032 [.000080] MIN TIN PER MIL-T-10727	APPD 09/FEB/94 ALEX HUNT III	CUSTOMER DRAWING	
APPLICATION SPEC 114-2050	APPD 09/FEB/94 TERRY L. SHUTTER		
WEIGHT -	PRODUCT SPEC -		

THIS DRAWING IS A CONTROLLED DOCUMENT FOR AMP INCORPORATED. IT IS SUBJECT TO CHANGE AND THE CONTROLLING ENGINEERING ORGANIZATION SHOULD BE CONTACTED FOR THE LATEST REVISION.