

4

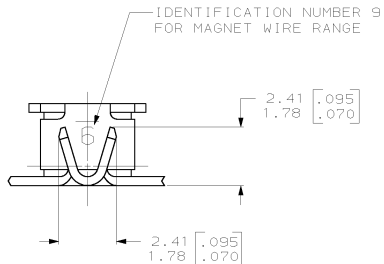
3

2

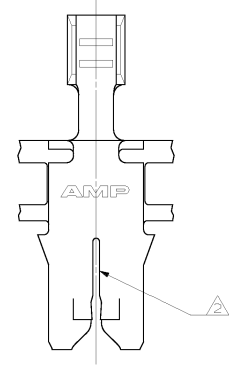
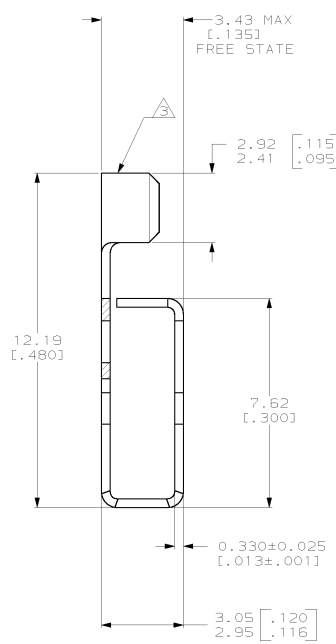
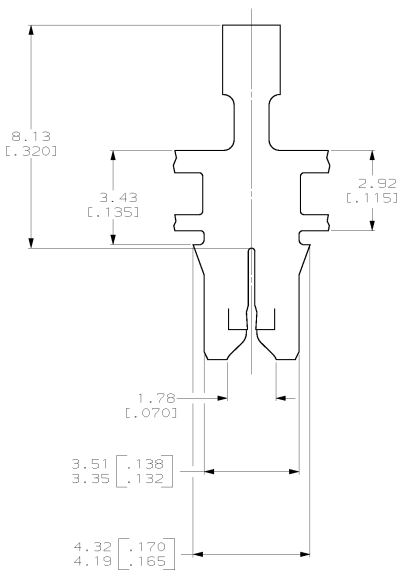
1

THIS DRAWING IS UNPUBLISHED. RELEASED FOR PUBLICATION
 (C) COPYRIGHT IS BY AMP INCORPORATED. ALL RIGHTS RESERVED.

REV	DATE	BY	APP'D	DESCRIPTION
D				RELEASED TO PROD. 063A-0167-00



1 CONTINUOUS STRIP ON REELS WITH TERMINALS LOCATED ON 5.59±0.08 [0.220±0.003] CENTERS.
 SLOT ACCEPTS 0.32-0.50mm [#28-#24] AWG COPPER MAGNET WIRE. 2 WIRES OF THE SAME SIZE PER SLOT.
 BARREL TO ACCEPT 0.2-0.6mm² [#24-#20] AWG LEAD WIRE.



THIS DRAWING IS A CONTROLLED DOCUMENT.		DATE	000000	63641-1	
DRAWN BY		DESIGNED BY	000000	PART NO	
CHECKED BY		DATE	000000	AMP Incorporated	
APPROVED BY		DATE	000000	Harrisburg, PA 17105-3608	
DIMENSIONS		PROJECT		AMP	
mm (INCHES)		108-2012		TERMINAL, F-CRIMP	
TOLERANCES UNLESS OTHERWISE SPECIFIED		APPLICATION SPEC		300 SERIES MAG-MATE™	
FRACTIONS		114-2046		SIZE CASE CODE (FORMING NO)	
DECIMALS		-		A2 00779 C= 63641	
MATERIAL		FINISH		RESTRICTED TO	
H04 BRASS		0.002032 [0.000080] MIN TIN		-	
		CUSTOMER DRAWING		SCALE 10:1 SHEET 1 OF 1 REV D	

63641
B