

4

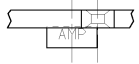
3

2

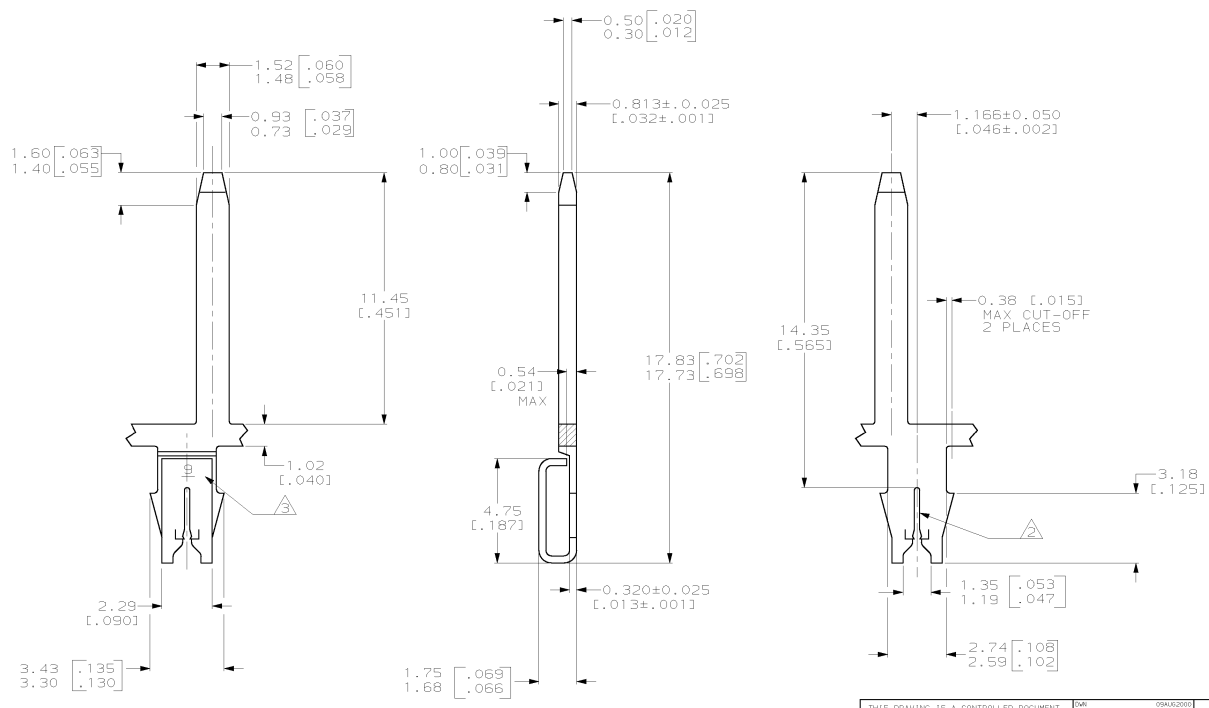
1

THIS DRAWING IS UNPUBLISHED. RELEASED FOR PUBLICATION. (C) COPYRIGHT IS BY AMP INCORPORATED. ALL RIGHTS RESERVED.

REV	DATE	BY	APP'D	DESCRIPTION
C	13 JUN 01	JR	KR	REL PER 063A-0316-01



- 1 CONTINUOUS STRIP ON REELS WITH TERMINALS LOCATED ON  $5.08 \pm 0.08$  [1.200 ± .003] CENTERS.
- △ SLOT ACCEPTS 0.36-0.45mm [#27-#25] AWG COPPER MAGNET WIRE
- △ IDENTIFICATION NUMBER 9 FOR WIRE SLOT SIZE.
- △ 0.002032 [0.00080] MIN TIN PLATE OVER 0.00254 [0.00100] MIN COPPER UNDERPLATE.



1217459-1  
PART NUMBER

THIS DRAWING IS A CONTROLLED DOCUMENT.		DWG: MICHAEL S. FEJER DWF: MICHAEL S. FEJER APPR: FURT A. RANDOLPH DATE: 06/04/00 PROJECT SPEC: 108-2012 APPLICATION SPEC: 114-2069 WEIGHT: - CUSTOMER DRAWING	<b>AMP</b> AMP Incorporated Harrisburg, PA 17105-3608 TAB, 1.50 [0.059] SERIES, RIGHT HAND, 187 SERIES MAG-MATE™ SIZE: A2 CASE CODE: 00779 SCALE: 8:1 SHEET: 1 OF 1 REV: C	RESTRICTED TO: - 1217459
--	--	---	--	-----------------------------