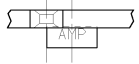
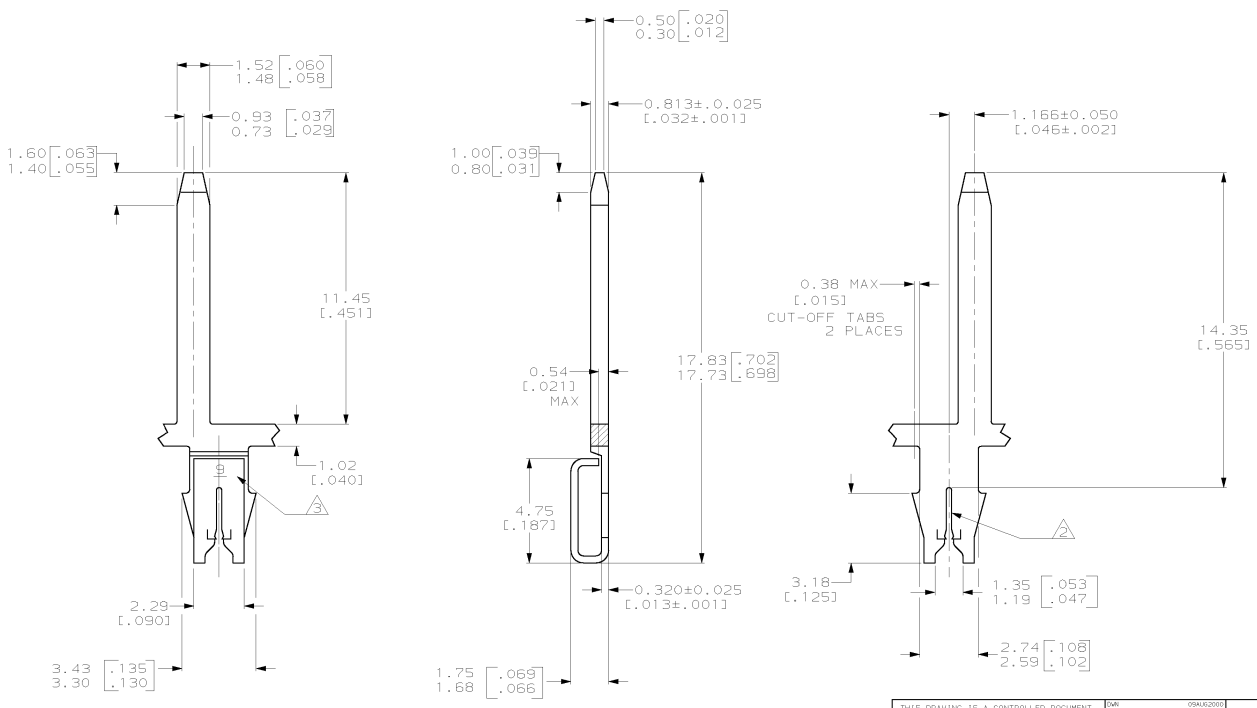


THIS DRAWING IS UNPUBLISHED. RELEASED FOR PUBLICATION
 (C) COPYRIGHT IS BY AMP INCORPORATED. ALL RIGHTS RESERVED.

REV	DATE	BY	APP'D	DESCRIPTION
1	13 JUN 01	JR	KR	REL PER 063A-0316-01



- 1 CONTINUOUS STRIP ON REELS WITH TERMINALS LOCATED ON 5.08±0.08 [.200±.003] CENTERS.
- △ SLOT ACCEPTS 0.36-0.45mm [#27-#25] AWG COPPER MAGNET WIRE
- △ IDENTIFICATION NUMBER 9 FOR WIRE SLOT SIZE.
- △ 0.002032 [.000080] MIN TIN PLATE OVER 0.00254 [.000100] MIN COPPER UNDERPLATE.



1217460-1
PART NUMBER

THIS DRAWING IS A CONTROLLED DOCUMENT.		DWG: MICHAEL S. FEJER DWF: MICHAEL S. FEJER NAME: FURT A. RANDOLPH TITLE: FURT A. RANDOLPH PROJECT SPEC: 108-2012 APPLICATION SPEC: 114-2069 WEIGHT: - CUSTOMER DRAWING	AMP AMP Incorporated Harrisburg, PA 17105-3608 TAB, 1.50 [.059] SERIES, LEFT HAND, 187 SERIES MAG-MATE™ SIZE: A2 CASE CODE: 00779 PART NUMBER: 1217460 SCALE: 8:1 SHEET: 1 OF 1 REV: C
--	--	--	--