

4

3

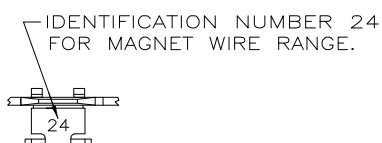
2

1

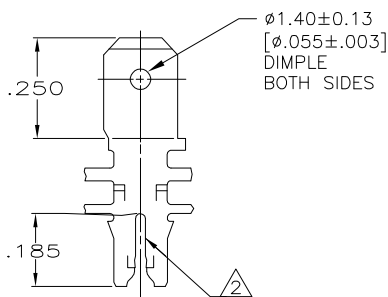
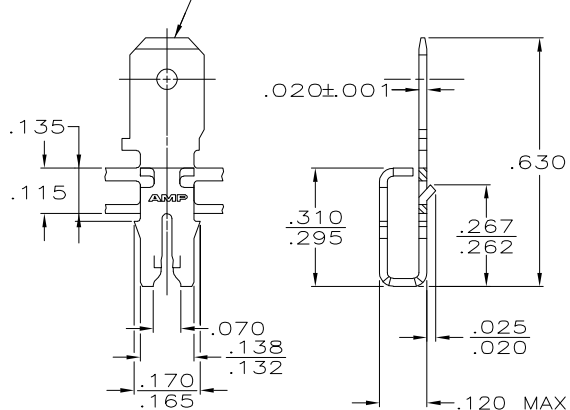
THIS DRAWING IS UNPUBLISHED. RELEASED FOR PUBLICATION
 © COPYRIGHT - BY TYCO ELECTRONICS CORPORATION. ALL RIGHTS RESERVED.

| LOC | | DIST | | REVISIONS | | | |
|-----|-----|----------------------|--|-----------|-----|------|--|
| P | LTR | DESCRIPTION | | DATE | DWN | APVD | |
| | R | REV PER OG3A-0747-04 | | 08OCT2004 | RF | KR | |

- 1 CONTINUOUS STRIP ON REELS WITH TERMINALS LOCATED ON .220 CENTERS.
- 2 SLOT ACCEPTS #19-#17 COPPER MAGNET WIRE.
- 3 AFTER INSERTION INTO PLASTIC HOLDER TAB PORTION MUST BE BENT OVER 45° TO 90° OR POTTED TO PREVENT PULL-OUT WHEN MATING RECEPTACLE IS DISCONNECTED.



FITS .187 SERIES FASTON RECEPTACLE



| | |
|-------------|-------------|
| SPLICE FREE | 62888-2 |
| - | 62888-1 |
| REELING | PART NUMBER |

| | | | | | | |
|--|-----------------|------------------|---------|---------------------------|------------------------------|--------------------|
| THIS DRAWING IS A CONTROLLED DOCUMENT. | | DWN | 11/7/88 | | Tyco Electronics Corporation | |
| | | CHK | 11/9/88 | | Harrisburg, PA 17105-3608 | |
| DIMENSIONS: INCHES | | MICHAEL S. FEHER | | TAB, 187 FASTON, MAG-MATE | | |
| TOLERANCES UNLESS OTHERWISE SPECIFIED: | | JEFF R. RUTH | | - | | |
| 0 PLC | ± - | APVD | | PRODUCT SPEC | | |
| 1 PLC | ± - | - | | 108-2012 | | |
| 2 PLC | ± - | - | | APPLICATION SPEC | | |
| 3 PLC | ± .010 | - | | 114-2067 | | |
| 4 PLC | ± - | - | | SIZE CAGE CODE DRAWING NO | | |
| ANGLES | ± 1° | - | | A3 | 00779 | 62888 |
| MATERIAL | FINISH | WEIGHT | | RESTRICTED TO | | |
| 4M BRASS | .000080 MIN TIN | - | | - | | |
| CUSTOMER DRAWING | | | | SCALE | 4:1 | SHEET 1 OF 1 REV R |