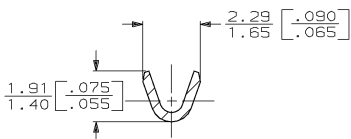
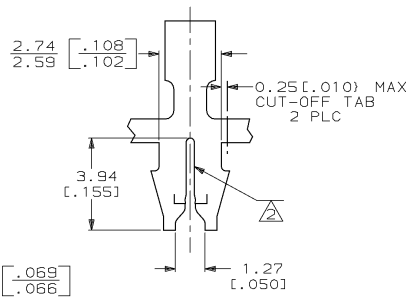
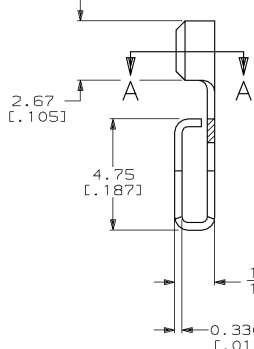
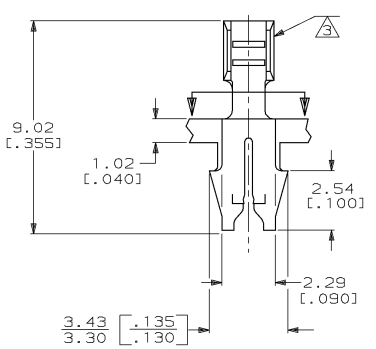
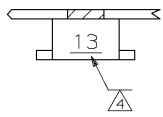


DRAWING MADE IN THIRD ANGLE PROJECTION
 THIS DRAWING IS UNPUBLISHED. RELEASED FOR PUBLICATION
 © COPYRIGHT 19 BY AMP INCORPORATED. ALL INTERNATIONAL RIGHTS RESERVED.

LOC		DIST		ZONE		LTR		REVISIONS		DATE	APPD
AF	50	P	F					H	REVISED PER AF-7503	8/16/91	NSF/NN

- 1 CONTINUOUS STRIP ON REELS WITH TERMINALS LOCATED ON 5.08 [.200] CENTERS.
- △ SLOT ACCEPTS A 0.51-0.64 mm DIA [#24-#22] AWG COPPER MAGNET WIRE ONLY (2 WIRES MAX).
- △ WIRE BARREL ACCEPTS 0.12-0.40 mm² [#26-#22] AWG LEAD WIRE.
- △ IDENTIFICATION NUMBER FOR MAGNET WIRE RANGE.



SECTION A-A
 ROTATED 90° CW

3.56 [.140]	F	1.40 [.055]	0.97 [.038] 0.39± [.22]	0.89 [.035] 0.20± [.24]	0.86 [.032] 0.14± [.26]
STRIP LENGTH ±.015	TYPE	WIDTH	±0.05 [E.00] HEIGHT	WIRE	
WIRE BARREL CRIMP					

METRIC

OBSOLETE	REVERSE REEL OF 62610-1	0.00381 [.000150] MIN THK PER MIL-T-10727	62610-2
	MINI-APPLICATOR		62610-1
	REELING	FINISH	PART NO
DO NOT SCALE PRINT. UNLESS SPECIFIED DIMENSIONS IN mm (INCHES) TOLERANCES ON : 2 PLC DEC # - 3 PLC DEC # 0.38 (.015) ANGLES ± -	DR 6/13/90 M.S. FEHER CHK 6/14/90 JR RUTH APPD 6/14/90 D DECKER	AMP INCORPORATED Harriaburg, Pa. 17105	
MATERIAL #4 HARD BRASS	APPD 6/14/90 TL SHUTTER PRODUCT SPEC	NAME	
FINISH SEE TABLE	APPLICATION SPEC 114-2069	SIZE C	CAGE CODE 00779
	WEIGHT	SCALE 8:1	DRAWING NO 62610
			SHEET 1 OF 1

CUSTOMER DRAWING