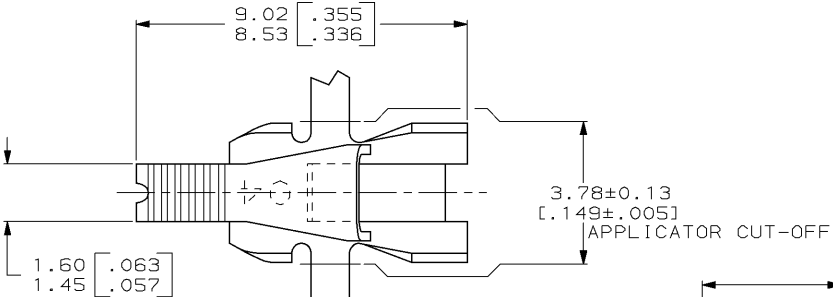


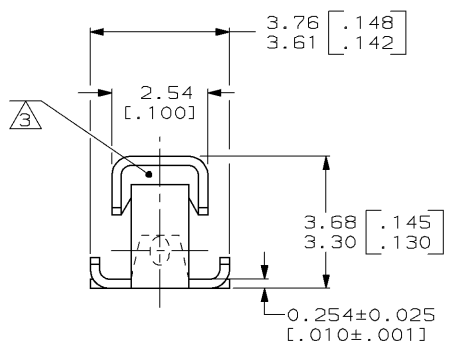
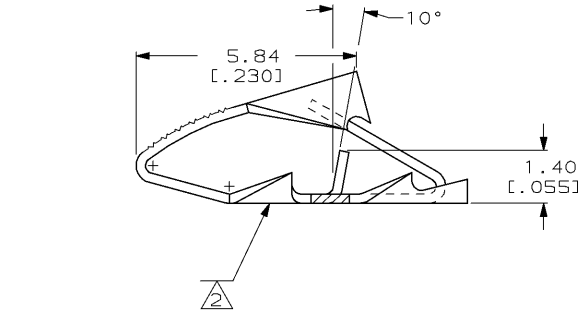
DRAWING MADE IN THIRD ANGLE PROJECTION

THIS DRAWING IS UNPUBLISHED. RELEASED FOR PUBLICATION, 19 .  
 © COPYRIGHT 19 BY AMP INCORPORATED. ALL INTERNATIONAL RIGHTS RESERVED.

LOC	DIST	REVISIONS				DATE	APPD
		ZONE	LTR	DESCRIPTION			
AF	50			REVISE PER ECN 061A-0178-98	06AUG98	SU/KR	



- 1 CONTINUOUS STRIP ON REELS WITH TERMINALS LOCATED ON 6.10 [.240] CENTERS.
- 2 IDENTIFICATION NUMBER (04) FOR MAGNET WIRE RANGE.
- 3 TERMINAL ACCEPTS A 1.27 X 0.51 [.050 X .020] POST.



**METRIC**

0.02-0.06mm [#52-#42] AWG	63613-1
COPPER MAGNET WIRE RANGE	PART NUMBER

DO NOT SCALE PRINT. UNLESS SPECIFIED DIMENSIONS IN mm [INCHES] TOLERANCES ON: 2 PLC DEC ± 0.25 (.010) 3 PLC DEC ± - ANGLES ± - MATERIAL H02 HARD BRASS FINISH 0.002032 [.000080] MIN TIN PER MIL-T-10727	DR 9/10/91 MICHAEL S. FEHER	<b>AMP</b> AMP INCORPORATED Harrisburg, Pa. 17105 NAME TERMINAL, POKE-IN, MINI MAG-MATE™
	CHK 9/10/91 JEFF R. RUTH	
	APPD 9/11/91 NELSON E. NEFF	
	APPD 9/16/91 TERRY L. SHUTTER	
PRODUCT SPEC -	APPLICATION SPEC 114-2047	SIZE <b>B</b> CAGE CODE 00779 DRAWING NO 63613
WEIGHT -	SCALE 10:1	SHEET 1 OF 1