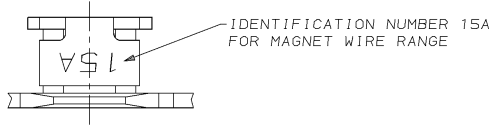
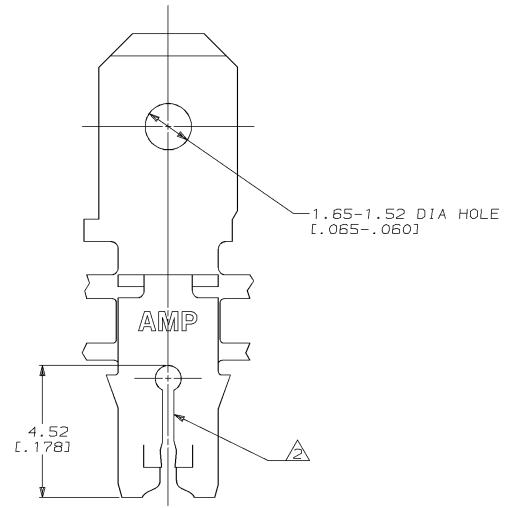
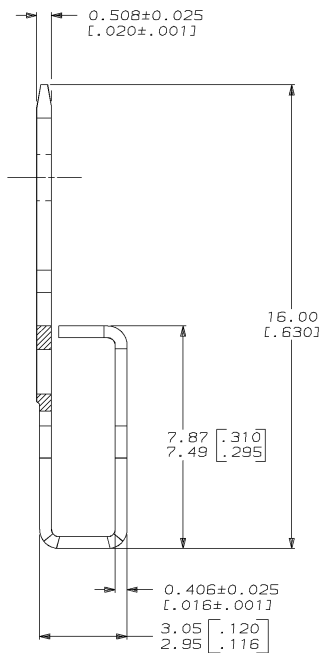
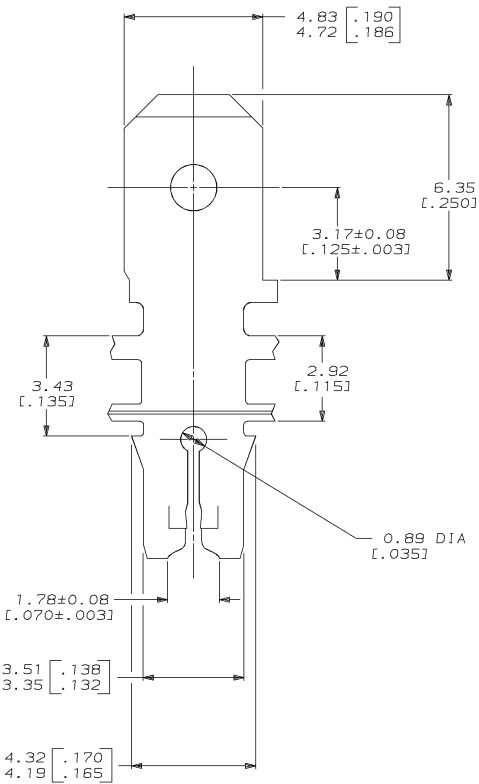


DRAWING MADE IN THIRD ANGLE PROJECTION
 THIS DRAWING IS UNPUBLISHED. RELEASED FOR PUBLICATION .19
 © COPYRIGHT 19 BY AMP INCORPORATED. ALL INTERNATIONAL RIGHTS RESERVED.

LOC		DIST		ZONE		LTR		REVISIONS		DATE	APPD
AF	50							C	REV LENGTH PER 0710-0034-95	03/FEB/95	MF/NN



- 1 CONTINUOUS STRIP ON REELS WITH TERMINALS LOCATED ON 5.59±0.08 [.220±.003] CENTERS.
- 2 SLOT TERMINATES A SINGLE MAGNET WIRE ONLY. ALUMINUM RANGE: 0.72-0.96mm [#21-#18.5] AWG.
- 3 AFTER INSERTION INTO PLASTIC HOLDER TAB PORTION MUST BE BENT OVER 45° TO 90° OR POTTED-IN TO PREVENT PULL-OUT WHEN MATING RECEPTACLE IS DISCONNECTED.
- 4 ANVIL HEIGHT TO BE 2.29±0.13 [.090±.005].
- 5 VARNISH RESIST OVER 0.002032 [.000080] MIN TIN PER MIL-T-10727.



THIS DRAWING IS A CONTROLLED DOCUMENT FOR AMP INCORPORATED. IT IS SUBJECT TO CHANGE AND THE CONTROLLING ENGINEERING ORGANIZATION SHOULD BE CONTACTED FOR THE LATEST REVISION.

DO NOT SCALE PRINT. UNLESS SPECIFIED DIMENSIONS IN mm [INCHES] TOLERANCES ON: 2 PLC DEC ± 0.25 (.010) 3 PLC DEC ± ANGLES ± -		DR 9/3/92 MICHAEL S. FEHER	63669-1 PART NO	
MATERIAL H03 PRE-MILLED BRASS	CHK 9/4/92 JEFF R. RUTH	APPD 9/15/92 NELSON E. NEFF	AMP AMP Incorporated Harrisburg, PA 17105-3608	
FINISH A	APPD 9/15/92 TERRY L. SHUTTER	PRODUCT SPEC 108-2012	NAME TERMINAL, TAB, 4.75 [.187] FASTON, TM MAG-MATE TM	
APPLICATION SPEC 114-2046 A	SIZE C	CAGE CODE 00779	DRAWING NO C-63669	
WEIGHT -	SCALE 10:1	SHEET 1 OF 1		