

4

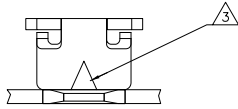
3

2

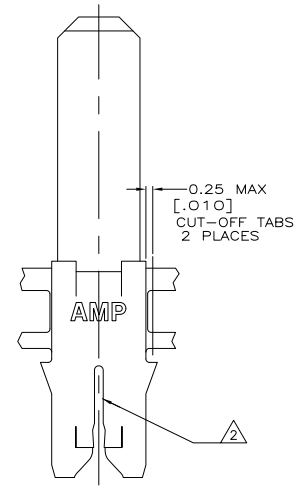
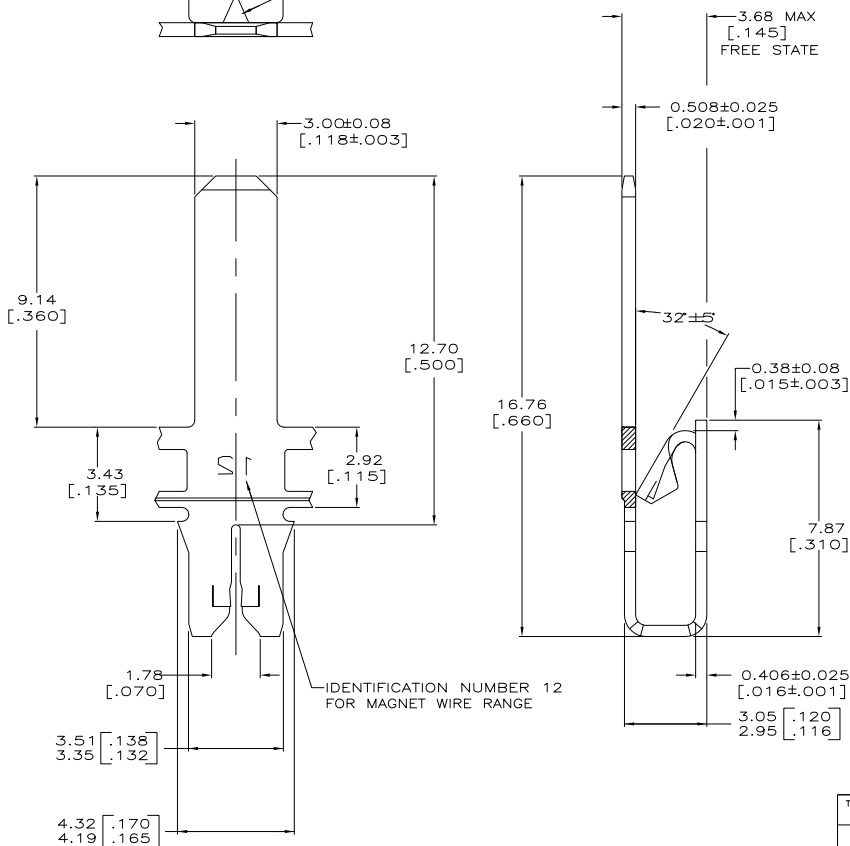
1

THIS DRAWING IS UNPUBLISHED. RELEASED FOR PUBLICATION  
 © COPYRIGHT BY TYCO ELECTRONICS CORPORATION. ALL RIGHTS RESERVED.

LOC	DIST	REVISIONS			
F	LNK	DESCRIPTION	DATE	BY	APPD
C2		REVISED PER ECR-07-030461	27DEC07	HMR	KR



- 1 CONTINUOUS STRIP ON REELS WITH TERMINALS LOCATED ON 5.59±0.08 [.220±.003] CENTERS.
- 2 SLOT ACCEPTS 0.45-0.64mm [#25-#22] AWG COPPER MAGNET WIRE. 2 WIRES OF THE SAME SIZE PER SLOT EXCEPT 0.64mm [#22] AWG WHICH IS ONE WIRE ONLY.
- 3 POKE-IN ACCEPTS A 0.5-0.8mm [#20-#18] AWG SOLID OR FUSED STRANDED LEAD WIRE.



REVERSE	1217210-2
STANDARD	1217210-1
REELING	PART NUMBER

THIS DRAWING IS A CONTROLLED DOCUMENT.		DW MICHAEL S. FEHR 11SEP1999 CKW KURT A. RANDOLPH 22SEP1999 APD KURT A. RANDOLPH 25SEP1999 NAME PRODUCT SPEC 108-2012 APPLICATION SPEC 114-2046 HEIGHT - CUSTOMER DRAWING	Tyco Electronics Corporation Harrisburg, PA 17105-3608 TAB, POKE-IN/3.00[.118] SERIES, COMBINATION, 300 SERIES MAG-MATE SIZE ONE CODE (DRAWING NO) A200779C=1217210 RESTRICTED TO - SCALE 10:1 SHEET 1 of 1 REV C2
DIMENSIONS: mm	TOLERANCES UNLESS OTHERWISE SPECIFIED:		
	0 PLG ± -		
	1 PLG ± -		
	2 PLG ± 0.25(010)		
	3 PLG ± -		
	4 PLG ± -		
	ANGLES ± -		
MATERIAL 4M PRE-MILLED	FINISH 0.002032[.00080]		

AMP 1471-9 REV 31MMR2000

1217210

A