

4

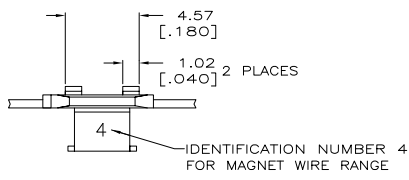
3

2

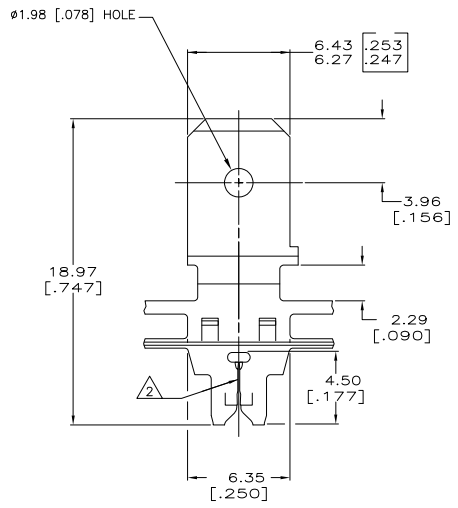
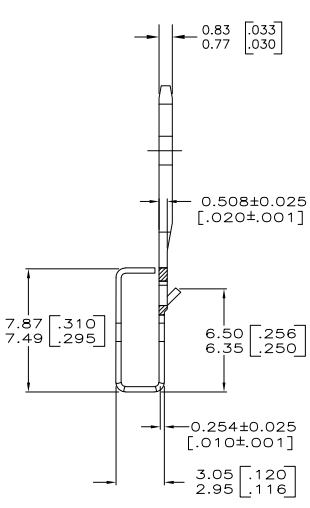
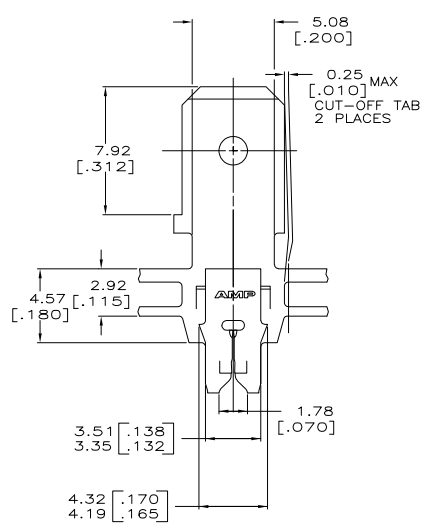
1

THIS DRAWING IS UNPUBLISHED. RELEASED FOR PUBLICATION  
 © COPYRIGHT BY TYCO ELECTRONICS CORPORATION. ALL RIGHTS RESERVED.

LOC	QST	REVISIONS			
TR	LR	DESCRIPTION	DATE	DR	APD
AF	50				
	E	REVISED PER ECR-06-010412	09NOV06	HMR	KR



- 1 CONTINUOUS STRIP ON REELS WITH TERMINALS LOCATED ON 8.38±0.08[.330±.003] CENTERS
- 2 SLOT ACCEPTS 0.18-0.23mm [#33-#31] AWG COPPER MAGNET WIRE. 2 WIRES OF THE SAME SIZE MAX PER SLOT.



63618-1  
 PART NUMBER

THIS DRAWING IS A CONTROLLED DOCUMENT.		DRN MICHAEL S. FEHER SR. 12/9/91	Tyco Electronics Corporation Harrisburg, PA 17105-3608
		DRN JEFF R. RUTH 12/9/91	
DIMENSIONS: mm [INCHES]	TOLERANCES UNLESS OTHERWISE SPECIFIED:	FINISH SPEC: 108-2012	SIZE TAB, 6.35 [.250] FASTON, MAG-MATE
Ø P/UC ± -	1 P/UC ± 0.25 [.010]	APPLICATION SPEC: 114-2094	RESTRICTED TO
MATERIAL: 4M PRE-MILLED BRASS	FINISH: 0.002032 [.000080] MIN TIN	WEIGHT: -	SCALE: A2 00779 ©=63618
CUSTOMER DRAWING			SHEET 1 of 1 REV E

AMP 1471-B REV 31MMR2000