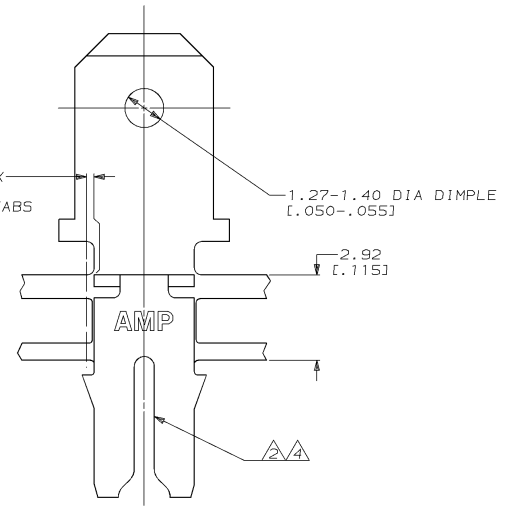
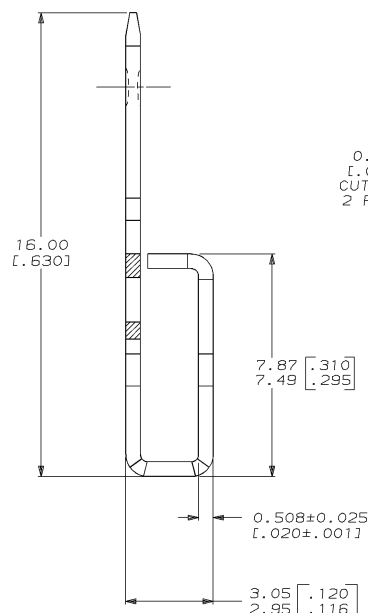
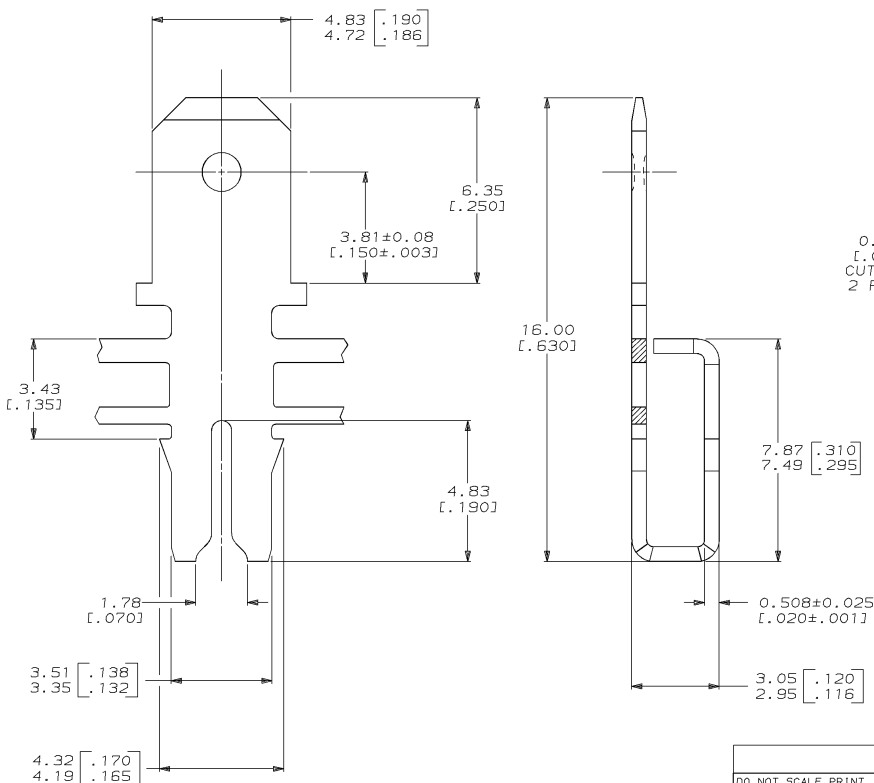
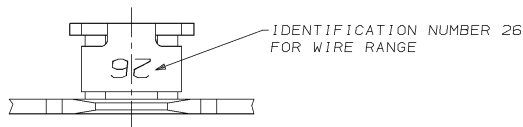


DRAWING MADE IN THIRD ANGLE PROJECTION
 THIS DRAWING IS UNPUBLISHED. RELEASED FOR PUBLICATION .19
 © COPYRIGHT 19 BY AMP INCORPORATED. ALL INTERNATIONAL RIGHTS RESERVED.

REVISIONS									
LOC	DIST	P	F	ZONE	LTR	DESCRIPTION	DATE	APPD	HF/NN
AF	50				D	REVISED AND REDRAWN PER 0710-0086-96	18MAR96		

- 1 CONTINUOUS STRIP ON REELS WITH TERMINALS LOCATED ON 8.38 ± 0.08 [.330 ± .003] CENTERS.
- 2 SLOT TERMINATES A SINGLE $0.81-1.02\text{mm}$ [#20-#18] AWG BARE SOLID COPPER WIRE.
- 3 AFTER INSERTION INTO PLASTIC HOLDER TAB PORTION MUST BE BENT OVER 45° TO 90° OR POTTED-IN TO PREVENT PULL-OUT WHEN MATING RECEPTACLE IS DISCONNECTED.
- 4 SLOT ALSO TERMINATES A SINGLE 0.81mm [#20] AWG OR A 0.81 [.032] DIA COPPER CLAD STEEL WIRE PER ASTM B452-67 CLASS 40 A.



62904-1
PART NO

DO NOT SCALE PRINT. UNLESS SPECIFIED DIMENSIONS IN mm [INCHES] TOLERANCES ON + 2 PLC DEC ± 0.25 [.010] 3 PLC DEC ± - ANGLES ± -		DR 18/MAR/96 MICHAEL S. FEHER	AMP Incorporated Harrisburg, PA 17105-3608	
MATERIAL 4M BRASS		CHK 22/MAR/96 RICHARD GRZYBOWSKI		
FINISH 0.002032 [.000080] MIN TIN PER MIL-T-10727		APPD 22/MAR/96 NELSON E. NEFF	NAME TERMINAL, TAB, 4.75 [.187] FASTON™ MAG-MATE™	
APPLICATION SPEC 114-2046		APPD 22/MAR/96 RICK OSKOWIS	SIZE C 00779	DRAWING NO C-62904
WEIGHT -		PRODUCT SPEC 108-2012	SCALE 10:1	SHEET 1 OF 1

THIS DRAWING IS A CONTROLLED DOCUMENT FOR AMP INCORPORATED. IT IS SUBJECT TO CHANGE AND THE CONTROLLING ENGINEERING ORGANIZATION SHOULD BE CONTACTED FOR THE LATEST REVISION.

AMP 1471-6 REV 3-92
29-FEB-96 16:22:37 amp02644 /ws/dept2127/dwg2127/u_maa-mate/u_300

CUSTOMER DRAWING