

4

3

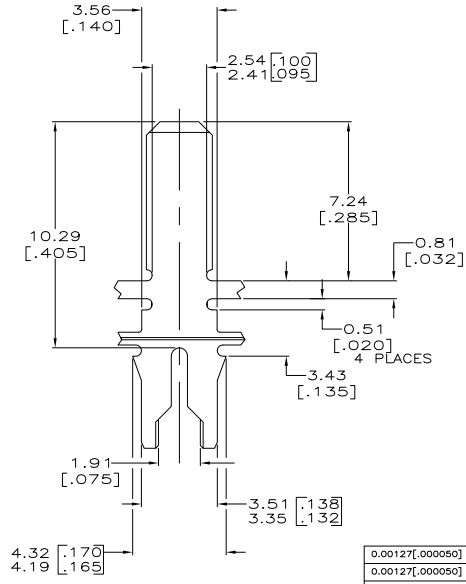
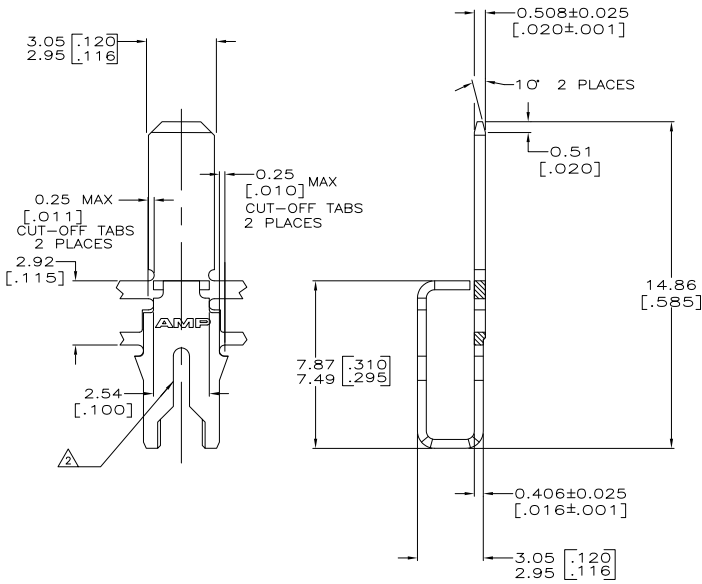
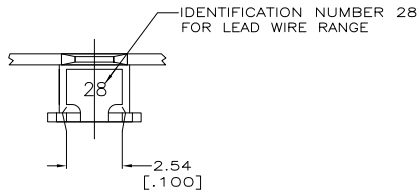
2

1

THIS DRAWING IS UNPUBLISHED. RELEASED FOR PUBLICATION  
 BY TYCO ELECTRONICS CORPORATION. ALL RIGHTS RESERVED.

LOC		DIST		REVISIONS			
F	LNK	DESCRIPTION	DATE	BY	APPD		
E1		REVISED PER ECR-07-018614	10AUG07	HMR	KR		

- 1 CONTINUOUS STRIP ON REELS WITH TERMINALS LOCATED ON 5.59±0.08 [.220±.003] CENTERS.
- △ SLOT TERMINATES A SINGLE 0.8-0.9mm [#18] AWG TIN PLATED SOLID, FUSED STRANDED OR STRANDED (7, 16, OR 19 STRANDS) WIRE WITH CROSS-LINKED POLYETHYLENE INSULATION, 2.26[.089] MAX DIA.
- △ MTA PRODUCT SPEC IS 108-1051 MAG-MATE PRODUCT SPEC IS 108-2012
- △ MTA APPLICATION SPEC IS 114-1020 MAG-MATE APPLICATION SPEC IS 114-2046
- △ TERMINALS ARE STRESS RELIEVED
- △ PRELIMINARY - NOT FOR PRODUCTION.



0.00127[.000050] MIN NICKEL	REVERSE	△	63974-4
0.00127[.000050] MIN NICKEL	STANDARD	△	63974-3
0.002032[.000080] MIN TIN	REVERSE		63974-2
0.002032[.000080] MIN TIN	STANDARD		63974-1
	FINISH	REELING	PART NUMBER

THIS DRAWING IS A CONTROLLED DOCUMENT.

DIMENSIONS: mm [INCHES]	TOLERANCES UNLESS OTHERWISE SPECIFIED:	0 PLG ± .010	1 PLG ± .015	2 PLG ± .020	3 PLG ± .025	4 PLG ± .030	ANGLES ± .5°		
MATERIAL: HD4 PRE-MILLED BRASS	FINISH: SEE TABLE	DRN: R. GRZYBOWSKI	CHK: M. S. FLEHER	APPD: KURT A. RANDOLPH	PROJCT SPEC: 96-1039-111	SIZE: A2	CAGE CODE: 00779	DRAWING NO: 63974	RESTRICTED TO: -
		TYCO ELECTRONICS CORPORATION		HARRISBURG, PA 17105-3608		TAB, 3.00[.118] SERIES		MTA®/MAG-MATE™	
		CUSTOMER DRAWING		SCALE: 8:1		SHEET: 1 of 1		REV: E1	

AMP 1471-9 REV 31MM2000

63974

A