

4

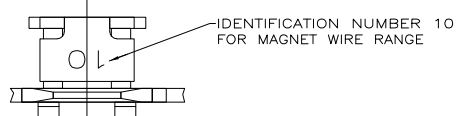
3

2

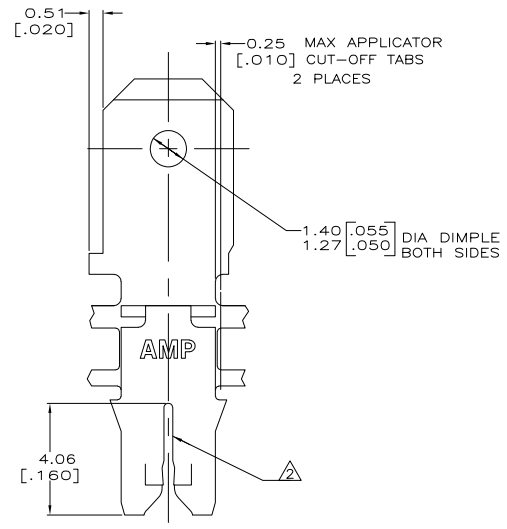
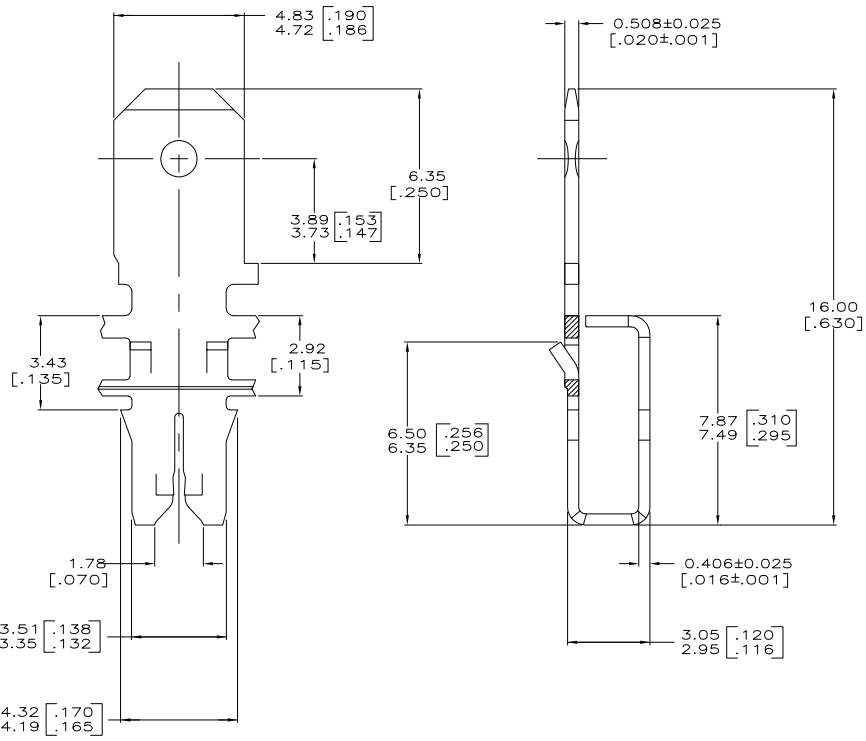
1

THIS DRAWING IS UNPUBLISHED. RELEASED FOR PUBLICATION
 © COPYRIGHT BY TYCO ELECTRONICS CORPORATION. ALL RIGHTS RESERVED.

LOC		DIBT		REVISIONS			
P	LTR	DESCRIPTION	DATE	MIN	APD		
H	REV PER	OG3A-0730-04	060CT2004	RF	KR		



1 CONTINUOUS STRIP ON REELS WITH TERMINALS LOCATED ON 5.59±0.08 [.220±.003] CENTERS. SLOT TERMINATES EITHER A SINGLE OR DOUBLE MAGNET WIRE OF THE SAME SIZE AND TYPE. COPPER RANGE: 0.36-0.57mm [#27-#23] AWG.



THIS DRAWING IS A CONTROLLED DOCUMENT.		DRN MICHAEL S. FEHR 6/29/93	Tyco Electronics Corporation	
DIMENSIONS: INCHES		OK LORI A. MAYER 7/7/93	Harrisburg, PA 17105-3608	
MATERIAL: 4M PRE-MILLED BRASS		APP T. SHUTTER 7/7/93	TERMINAL, TAB, 4.75 [.187] FASTON, MAG-MATE	
FINISH: 0.002032 [.000080] MIN TIN		PRODUCT SPEC: 108-2012	SIZE: A2	CHG CODE: 00779
		APPLICATION SPEC: 114-2067	DRAWING NO: C-63107	
		RIGHT: -	SCALE: 10:1	
		CUSTOMER DRAWING	SHEET 1 OF 1 REV H	

AMP 1471-9 REV 31MM2000

63107