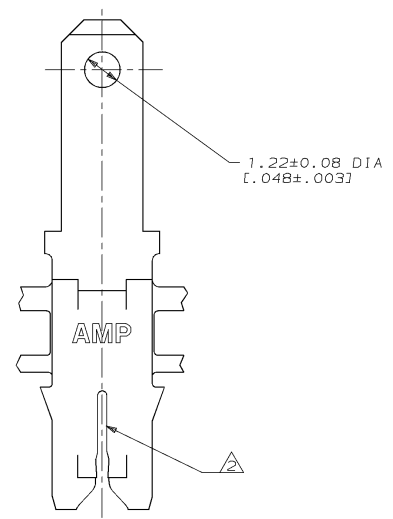
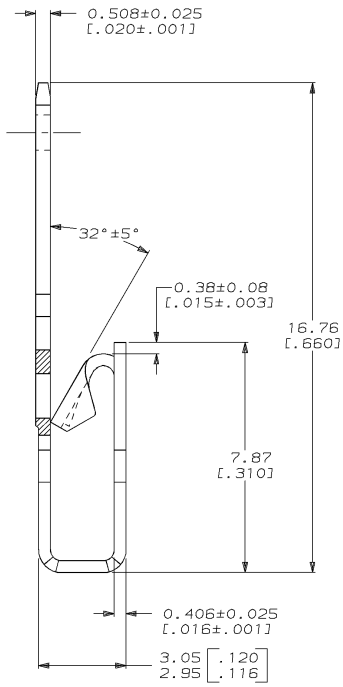
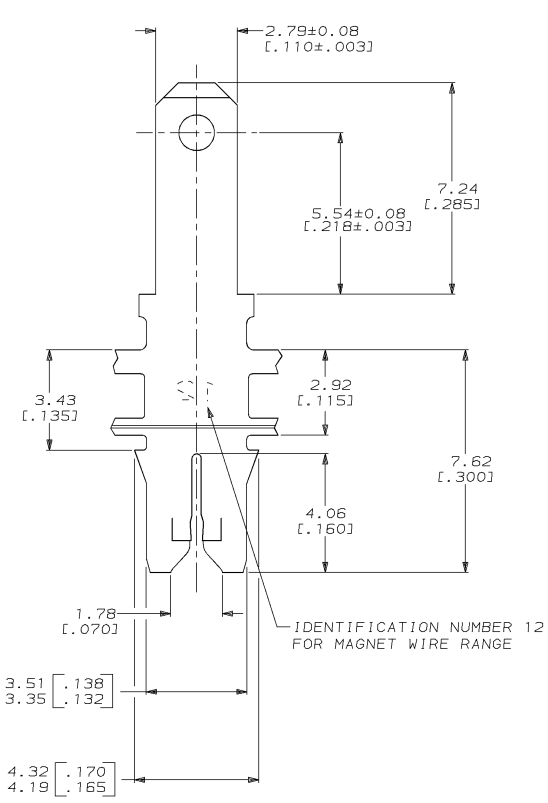
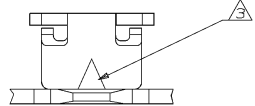


DRAWING MADE IN THIRD ANGLE PROJECTION
 THIS DRAWING IS UNPUBLISHED. RELEASED FOR PUBLICATION .19
 © COPYRIGHT 19 BY AMP INCORPORATED. ALL INTERNATIONAL RIGHTS RESERVED.

LOC	DIST	P	F	ZONE	LTR	REVISIONS	DATE	APPD
AF	50				F	ADDED -2 & REDRAWN 0710-0606-94	03/DEC/94	MF/NN

- △ VARNISH RESIST OVER 0.002032 [.000080] MIN TIN PER MIL-T-10727.
- △ 0.002032 [.000080] MIN TIN PER MIL-T-10727.

- 1 CONTINUOUS STRIP ON REELS WITH TERMINALS LOCATED ON 5.59±0.08 [.220±.003] CENTERS.
- 2 SLOT ACCEPTS 0.45-0.64mm [#25-#22] AWG COPPER MAGNET WIRE. 2 WIRES OF THE SAME SIZE PER SLOT EXCEPT 0.64mm [#22] AWG WHICH IS ONE WIRE ONLY.
- 3 POKE-IN ACCEPTS A 0.5-0.8mm² [#20-#18] AWG SOLID OR FUSED STRANDED LEAD WIRE.
- 4 AFTER INSERTION INTO PLASTIC HOLDER TAB PORTION MUST BE BENT OVER 45° TO 90° OR POTTED-IN TO PREVENT PULL-OUT WHEN MATING RECEPTACLE IS DISCONNECTED.



△	63063-2
△	63063-1
FINISH	PART NO

DO NOT SCALE PRINT. UNLESS SPECIFIED DIMENSIONS IN mm [INCHES] TOLERANCES ON 2 PLC DEC ± 0.25 [.010] 3 PLC DEC ± ANGLES ± -		DR 17/DEC/94 MICHAEL S. FEHER	AMP AMP Incorporated Harrisburg, PA 17105-3608 NAME TERMINAL, TAB, POKE-IN/2.79 [.110] FASTON™ COMBINATION, MAG-MATE™		
MATERIAL 4M PRE-MILLED BRASS		CHK 13/DEC/94 JEFF R. RUTH			
FINISH SEE TABLE		APPD 20/DEC/94 NELSON E. NEFF	SIZE C	CAGE CODE 00779	DRAWING NO C=63063
APPD 20/DEC/94 TERRY L. SHUTTER		PRODUCT SPEC 108-2012	SCALE 10:1	SHEET 1 OF 1	
WEIGHT -		APPLICATION SPEC 114-2046	CUSTOMER DRAWING		

THIS DRAWING IS A CONTROLLED DOCUMENT FOR AMP INCORPORATED. IT IS SUBJECT TO CHANGE AND THE CONTROLLING ENGINEERING ORGANIZATION SHOULD BE CONTACTED FOR THE LATEST REVISION.