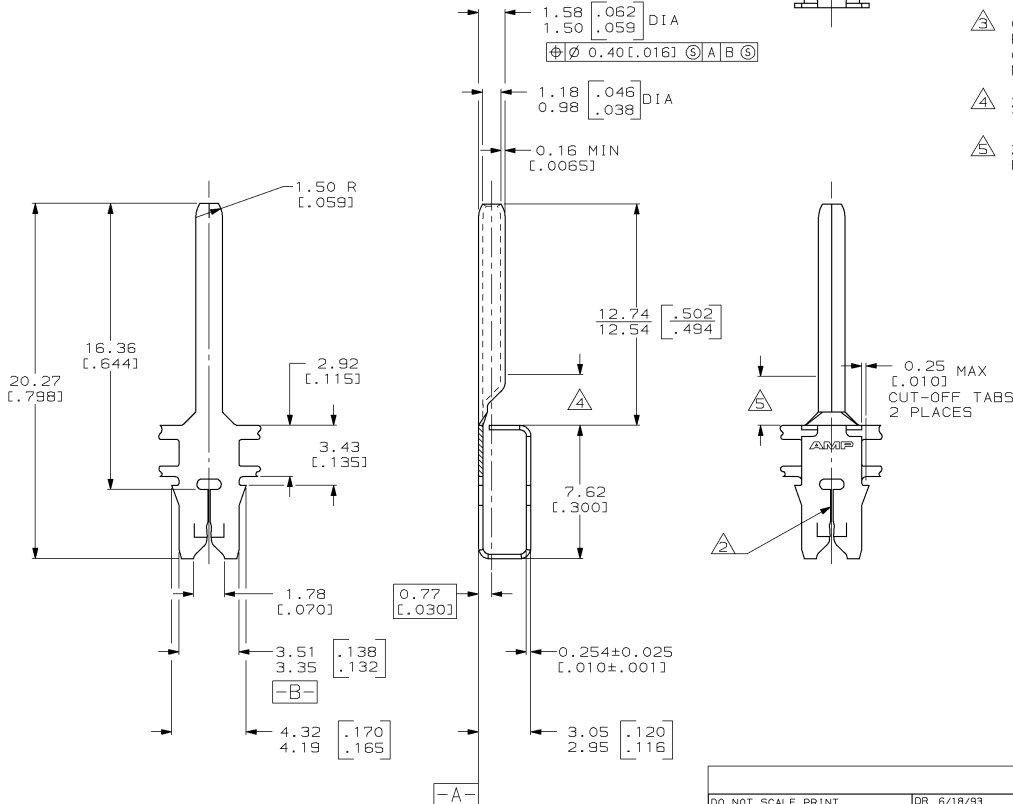
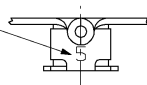


THIS DRAWING IS UNPUBLISHED. RELEASED FOR PUBLICATION .19  
 © COPYRIGHT 19 BY AMP INCORPORATED. ALL INTERNATIONAL RIGHTS RESERVED.

LOC		DIST		ZONE		LTR		REVISIONS		DATE	APPD
AF	50	P	F					K	REVISE PER ECN 0G1A-0391-98	21NOV98	HF/KR

IDENTIFICATION NUMBER 5 FOR  
MAGNET WIRE RANGE



- 1 CONTINUOUS STRIP ON REELS (NO SPLICES) WITH TERMINALS LOCATED ON 5.59±0.08 [.220±.003] CENTERS.
- △ SLOT TERMINATES EITHER SINGLE OR DOUBLE COPPER MAGNET WIRES OF THE SAME SIZE, 0.23-0.32mm [#31-#28] AWG.
- △ 0.00203 [.000080]-0.00381 [.000150] PRE-TIN PL PER MIL-T-10727 OVER 0.00254 [.000100]-0.00508 [.000200] PRE-COPPER UNDERPLATE PER MIL-C-14550, WITH ANTI-CORROSION LUBE COATING.
- △ 2.90 [.114] MIN DISTANCE FOR BASE OF PIN TO BE CLOSED FOR INJECTION MOLDING.
- △ 2.80 [.110] MAX DISTANCE FOR TRANSITION FROM FLAT TO ROUND.

63722-1  
PART NUMBER

DO NOT SCALE PRINT. UNLESS SPECIFIED DIMENSIONS IN mm [INCHES] TOLERANCES ON + 2 PLC DEC ± 0.25 [.010] 3 PLC DEC ± ANGLES ± 1°		DR 6/18/93 MICHAEL S. FEHER	AMP Incorporated Harrisburg, PA 17105-3608		
MATERIAL #4M BRASS		CHK 7/12/93 LORI A. MAYER			
FINISH △		APPD 7/12/93 TERRY L. SHUTTER	NAME PIN, 1.52 [.060] DIA, MAG-MATE™		
		PRODUCT SPEC 108-2012	SIZE C	CAGE CODE 00779	DRAWING NO C-63722
		APPLICATION SPEC 114-2046	SCALE 6:1	SHEET 1 OF 1	
		WEIGHT -	CUSTOMER DRAWING		

THIS DRAWING IS A CONTROLLED DOCUMENT FOR AMP INCORPORATED. IT IS SUBJECT TO CHANGE AND THE CONTROLLING ENGINEERING ORGANIZATION SHOULD BE CONTACTED FOR THE LATEST REVISION.

63722

A