

4

3

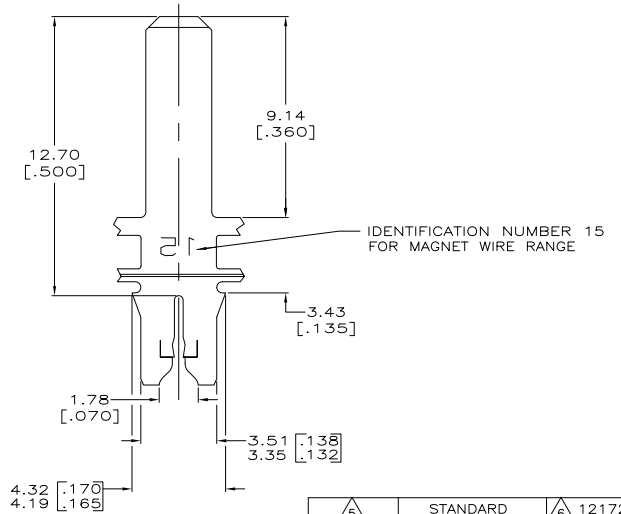
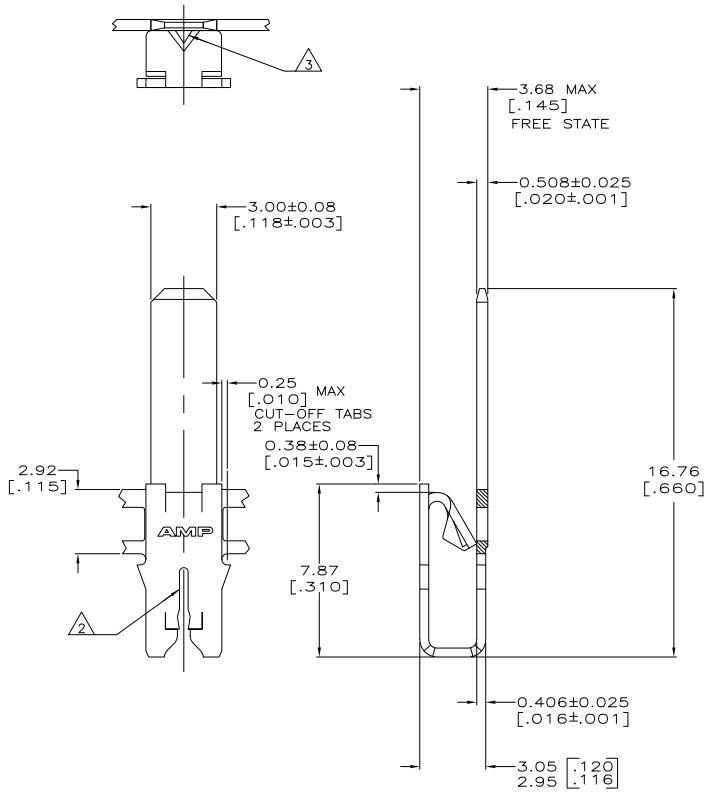
2

1

THIS DRAWING IS UNPUBLISHED. RELEASED FOR PUBLICATION.
 © COPYRIGHT BY TYCO ELECTRONICS CORPORATION. ALL RIGHTS RESERVED.

LOC	DIST	REVISIONS			
F	LNK	DESCRIPTION	DATE	BY	APP'D
AF	50	E2	REVISED PER ECR-07-030483	21DEC07	HMR KR

- 1 CONTINUOUS STRIP ON REELS WITH TERMINALS LOCATED ON 5.59±0.08 [.220±.003] CENTERS.
- 2 SLOT ACCEPTS 0.54-0.81mm [#23.5-#20] AWG COPPER MAGNET WIRE. 2 WIRES OF THE SAME AND TYPE PER SLOT. EXCEPT 0.64-0.81mm [#22-#20] AWG WHICH IS ONE WIRE ONLY.
- 3 POKE-IN ACCEPTS A 0.5-0.8mm² [#20-#18] AWG SOLID OR FUSED STRANDED LEAD WIRE.
- 4 0.002032 [.000080] MIN TIN PLATE
- 5 0.001270 [.000050] MIN NICKEL PLATE.
- 6 PRELIMINARY - NOT FOR PRODUCTION.



5	STANDARD	6	1217211-3
4	STANDARD		1217211-2
4	REVERSE		1217211-1
FINISH	REELING	PART NUMBER	

THIS DRAWING IS A CONTROLLED DOCUMENT.		DM MICHAEL S. FEHR 14SEP1999	Tyco Electronics Corporation	
		CHK KURT A. RANDOLPH 22SEP1999	Harrisburg, PA 17105-3608	
		APD KURT A. RANDOLPH 25SEP1999	NAME	
DIMENSIONS: mm [INCHES]		PRODUCT SPEC: 108-2012	TAB, POKE-IN/3.00 [.118] SERIES, COMBINATION, 300 SERIES MAG-MATE	
TOLERANCES UNLESS OTHERWISE SPECIFIED:		APPLICATION SPEC: 114-2046	SIZE: A2	ONE CODE (DRAWING NO): 00779
0 PLG ± -		WEIGHT: -	RESTRICTED TO: -	
1 PLG ± -				
2 PLG ± 0.25(010)				
3 PLG ± -				
4 PLG ± -				
ANGLES ± -				
MATERIAL: 4M PRE-MILLED BRASS	FINISH: SEE TABLE	CUSTOMER DRAWING	SCALE: 8:1	SHEET: 1 of 1

AMP 1471-9 REV 31MMR2000

1217211

A