

4

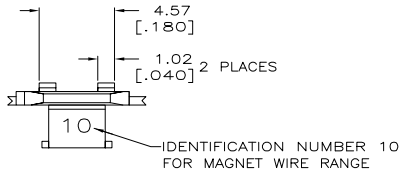
3

2

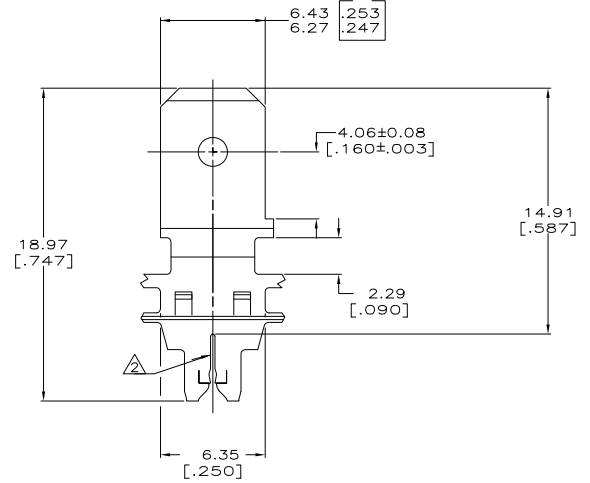
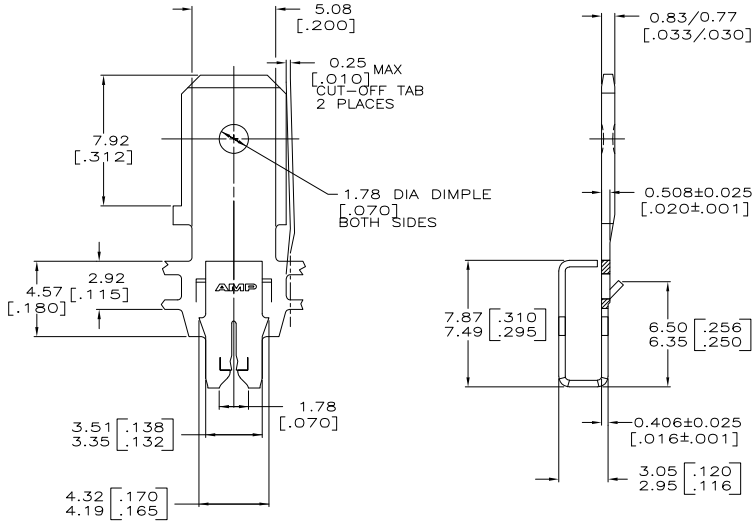
1

THIS DRAWING IS UNPUBLISHED. RELEASED FOR PUBLICATION
 © COPYRIGHT 19 BY AMP INCORPORATED. ALL RIGHTS RESERVED.

LOC		DIST		REVISIONS			
				DESCRIPTION	DATE	BY	APP'D
AF	50	F	LTR				
		G		REV PER ECR 06-010492	02OCT06	MF	GP



1 CONTINUOUS STRIP ON REELS WITH TERMINALS LOCATED ON 8.38±0.08 [.330±.003] CENTERS.
 △ SLOT ACCEPTS 0.36-0.58mm [#27-#23] AWG COPPER MAGNET WIRE.
 TWO WIRES OF THE SAME SIZE MAX PER SLOT.



082 PRE-MILLED BRASS	63128-3
4M PRE-MILLED BRASS	63128-1
MATERIAL	PART NUMBER

THIS DRAWING IS A CONTROLLED DOCUMENT.		DRN MICHAEL S. FEHER 07FEB97	AMP AMP Incorporated Harrisburg, PA 17105-3608	
DIMENSIONS: mm(INCHES)		CHK RICHARD GRZYBOWSKI 10FEB97	TAB, 6.35[.250] FASTON,™ MAG-MATE™	
TOLERANCES UNLESS OTHERWISE SPECIFIED:		APPC NELSON E. NEFF 10FEB97	DRAWING NO. A2 00779	
Ø PLC ±.0008	±.0008	PRODUCT SPEC 108-2012	SIZE	CAGE CODE
Ø PLC ±.0025(.010)	±.0025	APPLICATION SPEC 114-2094	SCALE	DRAWING NO. C=63128
Ø PLC ±.0050	±.0050	FINISH 0.002032(.000080)	CUSTOMER DRAWING	SCALE 6:1 SHEET 1 OF 1 REV G
Ø PLC ±.0100	±.0100	MIN TIN PER MIL-1-10727		

63128

A