

4

3

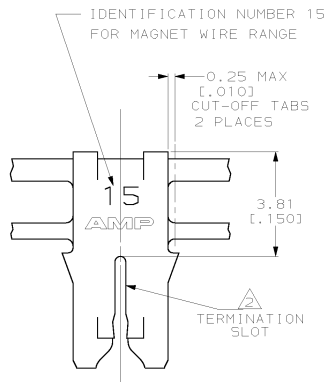
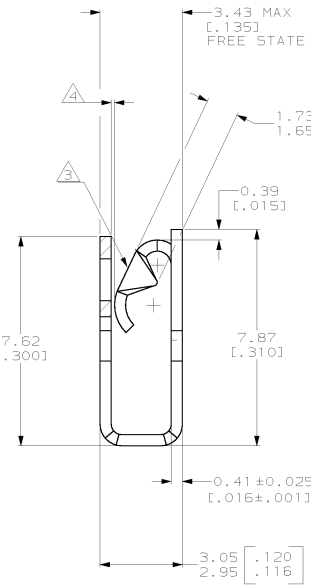
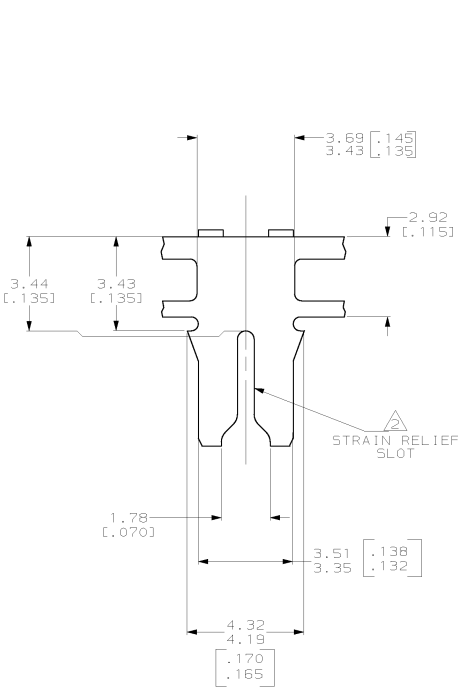
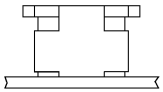
2

1

THIS DRAWING IS UNPUBLISHED. RELEASED FOR PUBLICATION
 © COPYRIGHT 19 BY AMP INCORPORATED. ALL RIGHTS RESERVED.

REV	DATE	BY	CHK	DESCRIPTION
B	05FEB02	MF	KR	REVISED PER DG3A-0047-02

- 1 CONTINUOUS STRIP ON REELS WITH TERMINALS LOCATED ON 5.59±0.08 [.220±.003] CENTERS
- △ SLOT ACCEPTS A 0.54-0.64mm [#23.5-#22] AWG COPPER MAGNET WIRE.
- △ MATES WITH STANDARD MAG-MATE STYLED POKE-IN TAB TERMINAL.
- △ WHEN FREE STATE IS COMPRESSED TO 3.23 [.127] DIMENSION GAP BETWEEN SPRING AND CARRIER IS TO BE 0.30 [.012] MAX.
- △ 0.002032 [.000080] MIN TIN OVER 0.00127 [.000050] MIN NICKEL UNDERPLATE.
- △ ANTI-FRETTING LUBRICANT APPLIED.
- △ 0.00382 [.000150] MIN SILVER PLATE OVER 0.00127 [.000050] MIN NICKEL UNDERPLATE.
- △ PRELIMINARY - NOT FOR PRODUCTION.



FINISH	MATERIAL	PART NUMBER
△	4M BRASS	△ 1217689-4
△	H04 PHOSPHOR BRONZE	△ 1217689-3
△	4M BRASS	△ 1217689-2
△	4M BRASS	1217689-1

THIS DRAWING IS A CONTROLLED DOCUMENT.		DATE: 10/12/2001	BY: SAMUEL D. WYNN	AMP Incorporated
DRAWN BY: MICHAEL S. FEIGER		DATE: 10/12/2001	BY: MICHAEL S. FEIGER	Harrisburg, PA 17105-3608
CHECKED BY: ROBERT A. BANDOLOPH		DATE: 10/12/2001	BY: ROBERT A. BANDOLOPH	
PRODUCT SPEC: 108-2012		NAME: SPECIAL LEAF CONTACT, 300 SERIES MAG-MATE™		
APPLICATION SPEC: 114-2046		SCALE: 10:1		
MATERIAL: SEE TABLE		CUSTOMER DRAWING		
FINISH: SEE TABLE		SHEET 1 OF 1		