

4

3

2

1

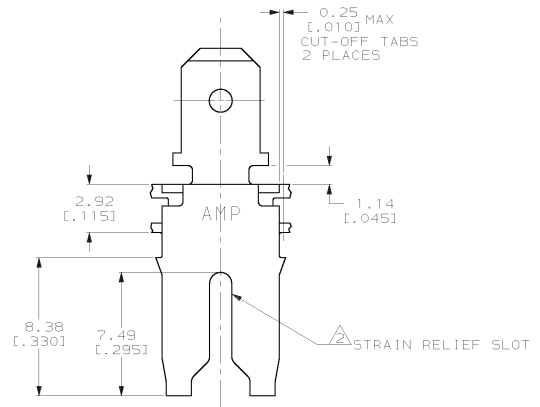
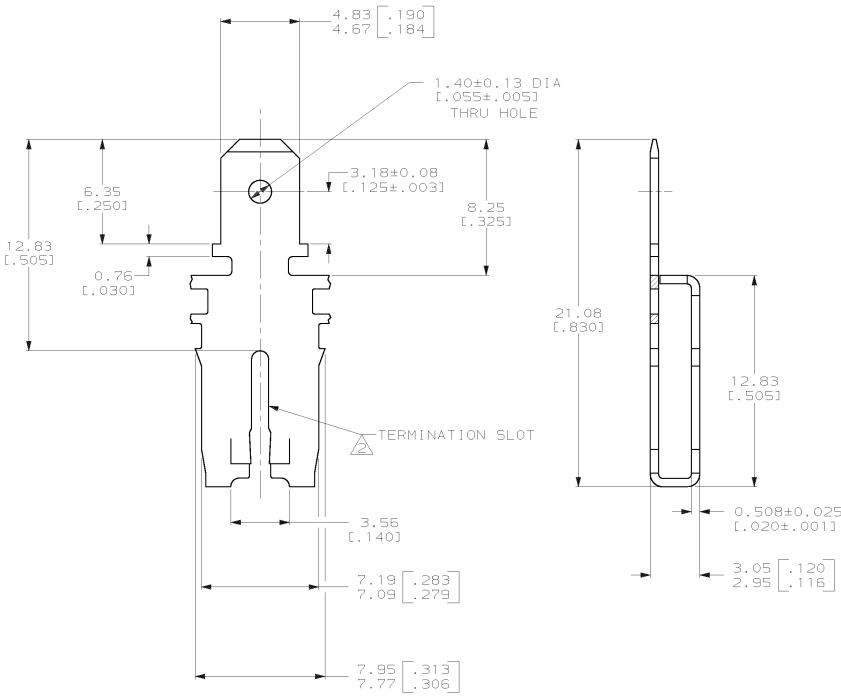
THIS DRAWING IS UNPUBLISHED. RELEASED FOR PUBLICATION. BY AMP INCORPORATED. ALL RIGHTS RESERVED.

LOC	DIST	REVISIONS			
		REV	DESCRIPTION	DATE	BY
AF	50	A	REV PER 0L10-0368-97	8/29/97	JR NN

IDENTIFICATION NUMBER 40 FOR MAGNET WIRE RANGE



- CONTINUOUS STRIP ON REELS WITH TERMINALS LOCATED ON 8.38±0.08 [1.330±.003] CENTERS.
- SLOT TERMINATES EITHER A SINGLE OR DOUBLE MAGNET WIRE OF THE SAME SIZE AND TYPE. COPPER RANGE: 1.29-1.45mm [#16-#15] AWG.
- AFTER INSERTION INTO PLASTIC HOLDER, TAB PORTION MUST BE BENT OVER 45° TO 90° OR POTTED-IN TO PREVENT PULL-OUT WHEN MATING RECEPTACLE IS DISCONNECTED.



63996-1 PART NUMBER

PROPOSED DESIGN NOT RELEASED FOR PRODUCTION

THIS DRAWING IS A CONTROLLED DOCUMENT.		DWG: MICHAEL S. FEIBER		AMP		AMP Incorporated Harrisburg, PA 17105-3608	
DIMENSIONS: mm (INCHES)		CHK: RICHARD GRZYBOWSKI		NAME: TAB, 4.75 [1.87] FASTON™ MAG-MATE™		RESTRICTED TO: -	
TOLERANCES UNLESS SPECIFIED:		APP: JEFF SOULE, NEFF		PART NO: 108-2053		CASE CODE: A200779	
Ø: .015		MATERIAL: 4M BRASS		APPLICATION SPEC: 114-2066		DRAWING NO: 63996	
HOLE: .002032 [1.000080]		FINISH: MIL-T-10727		REWORK: -		SCALE: 6:1	
MINI TIN PER		CUSTOMER DRAWING		SHEET 1 OF 1		REV A	

63996

63996-1

A