

4

3

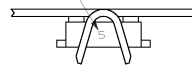
2

1

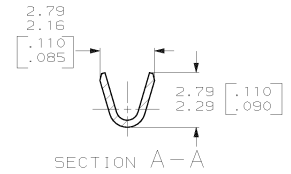
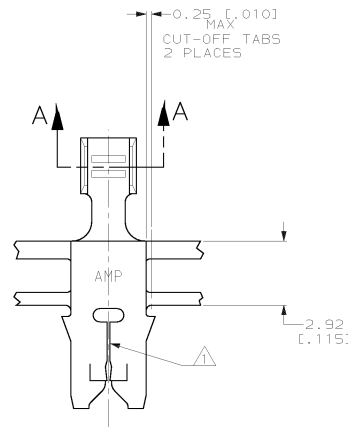
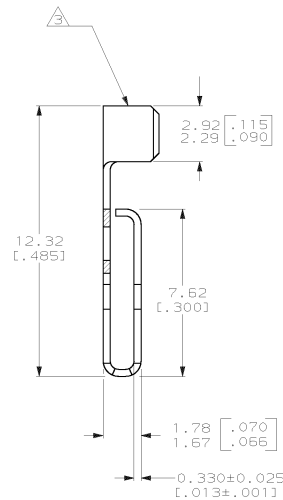
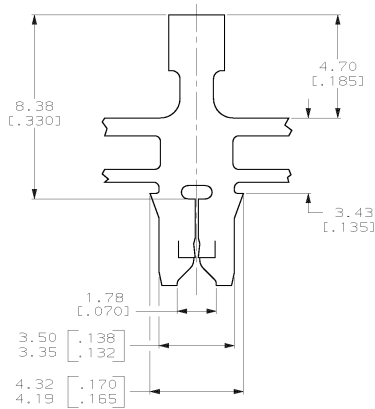
THIS DRAWING IS UNPUBLISHED. RELEASED FOR PUBLICATION
 (C) COPYRIGHT IS BY AMP INCORPORATED. ALL RIGHTS RESERVED.

LOC	DIST	REV	DESCRIPTION	DATE	BY	APP'D
AF	50	F	LM			
		E	REVISED PER EC 063A-0046-99	14JUL99	SM	KR

IDENTIFICATION NUMBER FOR MAGNET WIRE RANGE



- ⚠ SLOTT TERMINATES 0.23-0.32mm [#31-#28] AWG COPPER MAGNET WIRE EITHER SINGLE OR DOUBLE OF THE SAME SIZE.
- 2 CONTINUOUS STRIP ON REELS WITH TERMINALS LOCATED ON 8.38±0.08 [.330±.003] CENTERS.
- ⚠ WIRE BARREL TO ACCEPTS #22-#18 AWG STRANDED LEAD WIRE.



63236

B

A

63236-1
PART NUMBER

THIS DRAWING IS A CONTROLLED DOCUMENT.		DWG: MICHAEL S. FEHER 1750996 DES: RICHARD GRZYBOWSKI 2520996 APP'D: JAMES L. NEFF 2700996	AMP AMP Incorporated Harrisburg, PA 17105-3608
DIMENSIONS mm (INCHES)	DIMENSIONS UNLESS OTHERWISE SPECIFIED D/PLC ±.010 P/PLC ±.010 H/PLC ±.010 R/PLC ±.010 ANGLES ±°	PRODUCT SPEC: 108-2012 APPLICATION SPEC: 114-2046 FINISH: 0.002032(.000080) MIN TIN	TERMINAL, F-CRIMP, 300 SERIES, MAG-MATE™ SIZE: A2 CASE CODE: 00779 DRAWING NO: C-63236 SCALE: 8:1 SHEET 1 OF 1 REV E
MATERIAL: 4N BRASS		FINISH: 0.002032(.000080) MIN TIN	CUSTOMER DRAWING

AMP 1471-9 REV 29F8955

14-JUL-99 08:16:19 amp32302 /home/amp32302/redrad