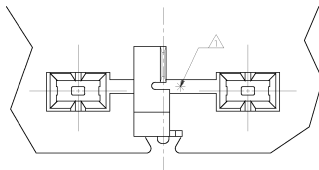
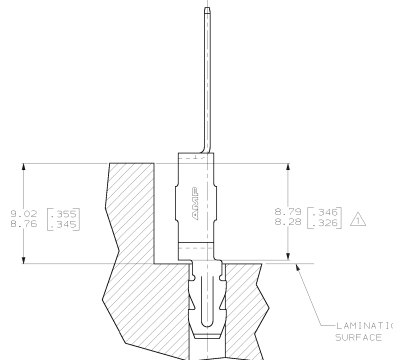
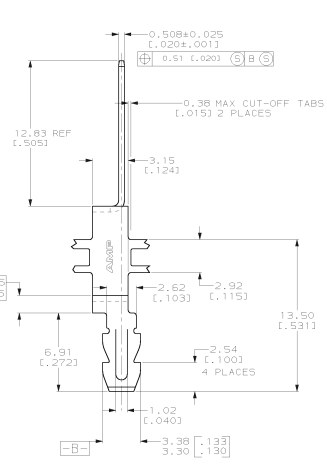
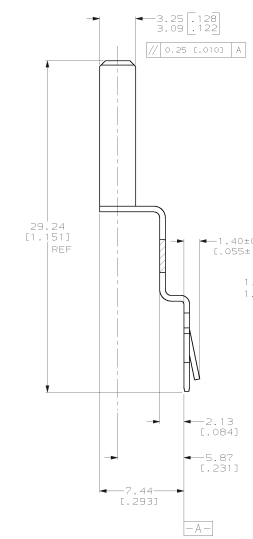
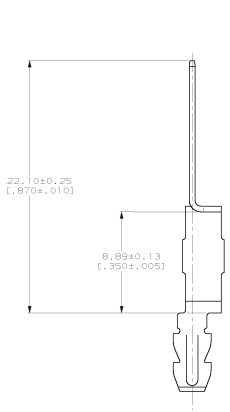
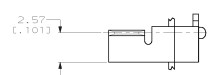


MAKING FROM OR UNDER LICENSE PROTECTION
 THIS DRAWING IS UNPUBLISHED. RELEASED FOR PUBLICATION
 © COPYRIGHT 19 BY AMP INCORPORATED. ALL INTERNATIONAL RIGHTS RESERVED.

REV	BY	DATE	DESCRIPTION	DATE	APP'D
AF	50	2004	REVISED LATCH HEIGHT 0634-0009-01		



△ POINT OF MEASUREMENT, LOCATED APPROXIMATELY AS SHOWN
 2 CONTINUOUS STRIP ON REELS WITH TERMINALS LOCATED ON 16.64±0.076 [1.655±.003] CENTERS



INSERTION SPECIFICATION

DO NOT SCALE PRINT. UNLESS SPECIFIED DIMENSIONS IN mm (INCHES) PREFERENCES: DWG 3 P/LC DEC # 0.25 L0101 UNITS # 1		DR 26/SEP/95 R-ARCHIBACK CHK 26/SEP/95 PLS-FORER APPD 26/SEP/95 NELSON EL NEFF APPD 26/SEP/95 TERRY L. SMOTHER PRODUCT SPEC - FINISH 0.002032 (.000080) MIN PRE-TIN PER MEL-T-10727	AMP Incorporated Harrisburg, PA 17105-9608 TERMINAL, GROUNDING, 3.18 [.125] TAB, MAG-MATE™ SIZE D 00779 ©=63878 SCALE 6:1 SHEET 1 OF 1
---	--	--	--

THIS DRAWING IS A CONTROLLED DOCUMENT FOR AMP INCORPORATED. IT IS SUBJECT TO CHANGE AND THE CONTROLLING DRAWING IDENTIFICATION SHOULD BE CONTACTED FOR THE LATEST REVISION.