

4

3

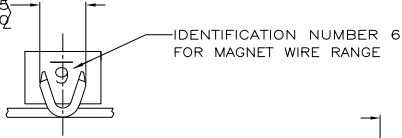
2

1

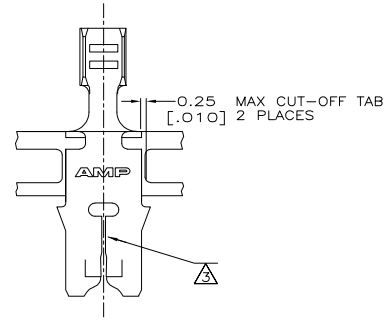
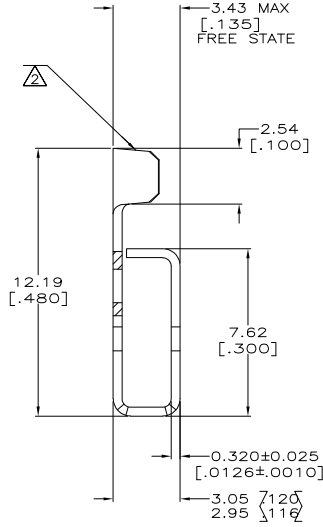
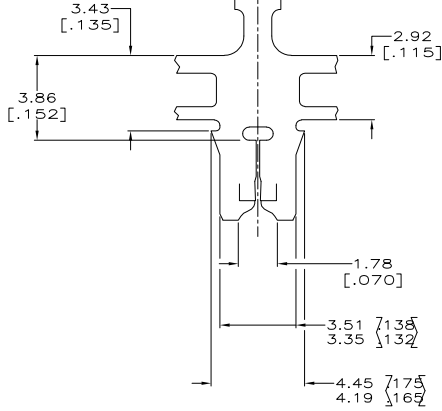
THIS DRAWING IS UNPUBLISHED. RELEASED FOR PUBLICATION .19  
 © COPYRIGHT 19 BY AMP INCORPORATED. ALL RIGHTS RESERVED.

LOC		DIST		REVISIONS			
F	LTR	DESCRIPTION	DATE	BY	APP'D		
AF	50						
		C	REV PER 063A-0745-04			08DCT2004	KR

2.41  $\sqrt{095}$   
 1.78  $\sqrt{070}$



- 1 CONTINUOUS STRIP ON REELS WITH TERMINALS LOCATED ON 5.59±0.08 [.220±.003] CENTERS.
- △ BARREL TO ACCEPT 0.2-0.6mm<sup>2</sup> [#24-20] LEAD WIRE.
- △ SLOT TERMINATES A SINGLE OR DOUBLE MAGNET WIRE OF THE SAME SIZE AND TYPE.
- COPPER RANGE: 0.25-0.36mm [#30-#27] AWG.



62992-1  
 PART NUMBER

THIS DRAWING IS A CONTROLLED DOCUMENT.		DR: SCOTT URICH 28JUL1990	AMP Incorporated Harrisburg, PA 17105-3608	RESTRICTED TO
		CHK: MICHAEL S. FEHER 20FEB1993		
DIMENSIONS: mm(INCHES)		APPC: KURT A. RANDOLPH 22FEB1993	TERMINAL, F-CRIMP, 300 SERIES MAG-MATE™	SIZE CASE CODE DRAWING NO A200779 C= 62992
TOLERANCES UNLESS OTHERWISE SPECIFIED:		PRODUCT SPEC: 108-2012		
MATERIAL: HO4 BRASS		APPLICATION SPEC: 114-2046	HEIGHT: -	CUSTOMER DRAWING
FINISH: 0.002032 [.000080] MIN TIN		SCALE: 8:1 SHEET 1 OF 1 REV C		

AMP 1471-9 REV 11JUN87 Translated 041009,124345 (YMM) (D014) (MMS) from  
 ComputerVision, Inc., Medium Revision 12-2-97

30-JUL-98 07:54:22 cmp13029

62992

B

A