

4

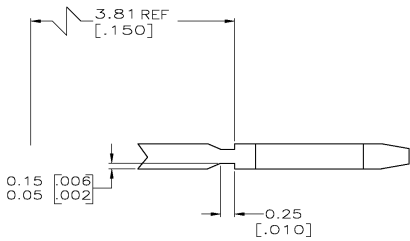
3

2

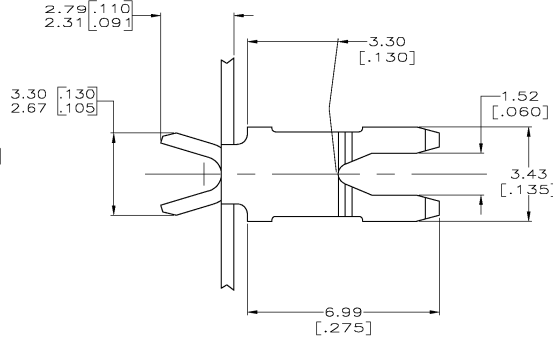
1

THIS DRAWING IS UNPUBLISHED.  
 © COPYRIGHT BY TYCO ELECTRONICS CORPORATION. ALL RIGHTS RESERVED.

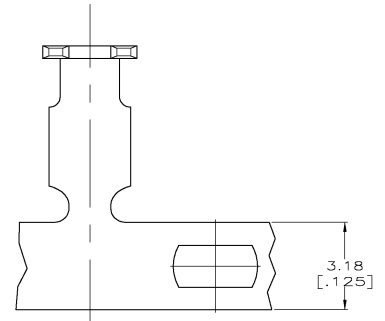
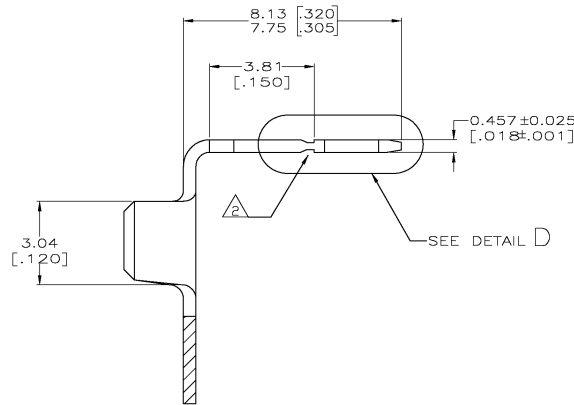
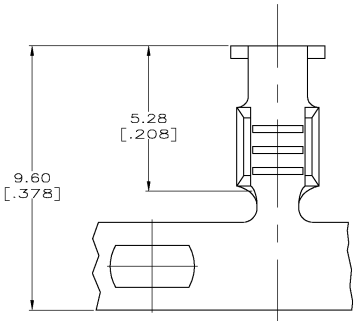
LOC		DIST		REVISIONS			
P	LTR	DESCRIPTION	DATE	OWN	APPD		
G		REVISED PER 063A-0750-02	18DEC02	MF	KR		



DETAIL D  
SCALE 20:1



1 CONTINUOUS STRIP ON REELS WITH TERMINALS LOCATED ON  $9.14 \pm 0.08$  [0.360 ± 0.003] CENTERS.  
 △ FOR OPTIMUM RETENTION FORCE IN POKE-IN TYPE MAG-MATE TERMINALS, ONE OF THE SERRATIONS AS SHOWN MUST BE ENGAGED WITH THE EDGE OF THE LEAF.



0.3-0.8mm <sup>2</sup> [#22-18 AWG]	63364-1
WIRE RANGE	PART NUMBER

THIS DRAWING IS A CONTROLLED DOCUMENT.		DW 03A0098		Tyco Electronics Corporation	
DIMENSIONS:		SCOTT URICH 1432P98		Horriaburg, PA 17105-3608	
TOLERANCES UNLESS OTHERWISE SPECIFIED:		MICHAEL S. FEHER 1432P98		-	
MM		KURT A. RANDOLPH 1432P98		-	
0 P.L.C. ±		PRODUCT SPEC		108-22045	
1 P.L.C. ±		APPLICATION SPEC		114-2050	
2 P.L.C. ±		FINISH		-	
3 P.L.C. ±		MATERIAL		OB1 BRASS	
4 P.L.C. ±		FINISH		0.000381 [0.000015]	
ANGLES		MATERIAL		MIN PRE-TIN PLATE	
±		CUSTOMER DRAWING		SCALE 10:1	
±		CUSTOMER DRAWING		SHEET 1 OF 1	
±		CUSTOMER DRAWING		REV G	

AMP 1431-9 REV 31 MAR 2000

63364-1/64

A