

4

3

2

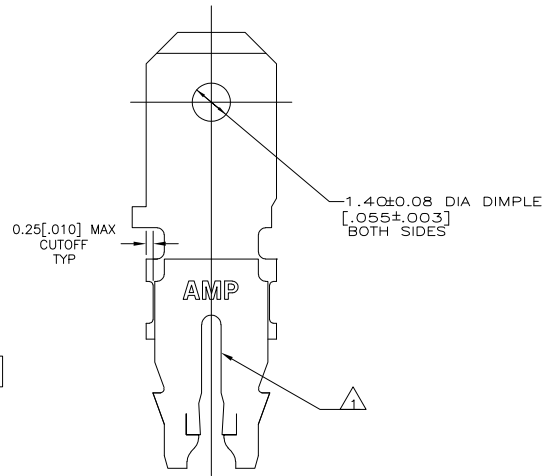
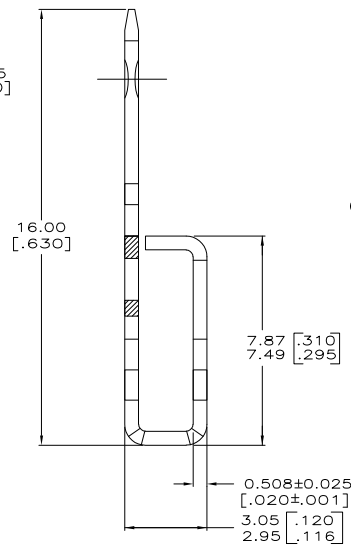
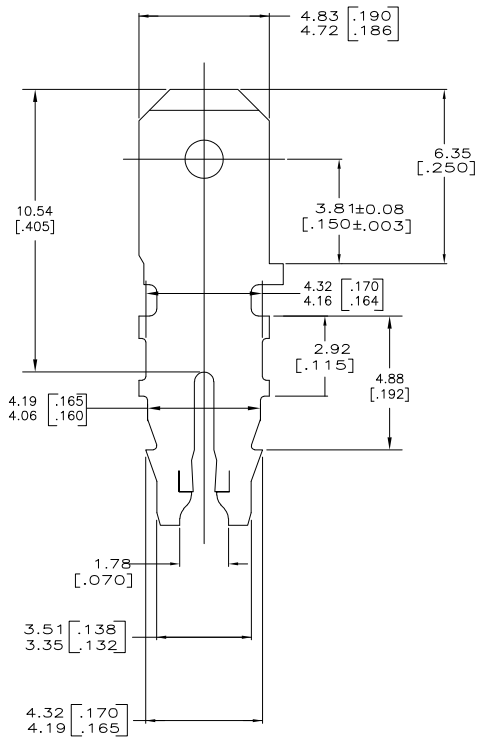
1

THIS DRAWING IS UNPUBLISHED. RELEASED FOR PUBLICATION.  
 © COPYRIGHT BY TYCO ELECTRONICS CORPORATION. ALL RIGHTS RESERVED.

LOC	DIST	REVISIONS			
F	LNK	DESCRIPTION	DATE	MIN	APD
AF	50	A1	REVISED PER ECR-05-009099	30AUG05	MF KR



- 1 SLOT TERMINATES EITHER A SINGLE OR DOUBLE MAGNET WIRE OF THE SAME SIZE AND TYPE. COPPER RANGE: 0.91-1.15mm [#19-#17] AWG.
- 2 AFTER INSERTION INTO PLASTIC HOLDER TAB PORTION MUST BE BENT OVER 45° TO 90° OR POTTED TO PREVENT PULL-OUT WHEN MATING RECEPTACLE IS DISCONNECTED.
- 3 SPECIAL CAVITY ANVIL HEIGHT REQUIRED  
 $3.30 \pm 0.07$  [.130 ± .003]  
 REF APPLICATION SPEC 114-2046, SEC. 3.2, NOTE 7



1742242-1  
 PART NUMBER

THIS DRAWING IS A CONTROLLED DOCUMENT.		DRW: MICHAEL S. FEHRE 07FEB2005	Tyco Electronics Corporation Harrisburg, Pa 17105-3608	
DIMENSIONS: INCHES		CHK: KURT A. RANDOLPH 07FEB2005	TERMINAL, TAB, 4.75 [.187] FASTON, LOOSE PIECE, 300 SERIES MAG-MATE	
TOLERANCES UNLESS OTHERWISE SPECIFIED:		APPD: KURT A. RANDOLPH 07FEB2005	RESTRICTED TO	
0 PLC	A -	PRODUCT SPEC	108-2012	SIZE CASE CODE DRAWING NO
1 PLC	B -	APPLICATION SPEC	114-2046/3	A2 00779 C=1742242
2 PLC	R 0.25 [.010]	HEIGHT	-	SCALE 10:1 SHEET 1 OF 1 REV A1
3 PLC	A -	MATERIAL	4M BRASS	
4 PLC	B -	FINISH	0.002032 [.000080] MIN TIN PLATE	
CUSTOMER DRAWING				

AMP 1471-9 REV 31MM0200

1742242

A