

4

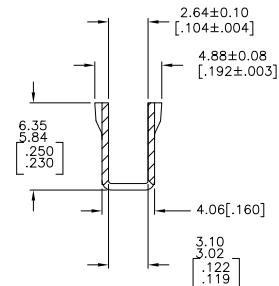
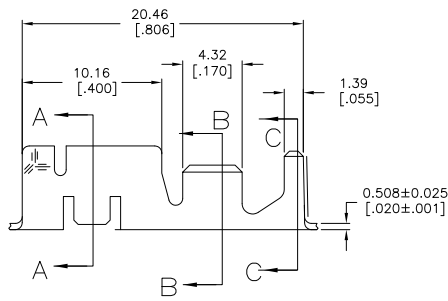
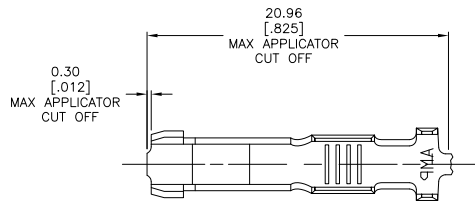
3

2

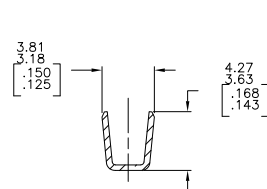
1

THIS DRAWING IS UNPUBLISHED. RELEASED FOR PUBLICATION.  
 BY TYCO ELECTRONICS CORPORATION. ALL INTERNATIONAL RIGHTS RESERVED.

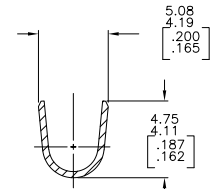
LOC	DIST	REVISIONS			
F	LN	DESCRIPTION	DATE	BY	APP
AF	50	AA3	REVISED PER ECR-09-010323	05MAY09	HMR GJ



SECTION A-A



SECTION B-B



SECTION C-C

- 1 CONTINUOUS STRIP ON REELS WITH TERMINALS LOCATED ON 22.61[.890] CENTERS
- 2 SPECIAL PACKAGING
- 3 PREPRODUCTION - FASR REQUIRED.

	TIN PLATE	3.30[.130] MAX	0.75-1.5mm <sup>2</sup> [#18-#16]AWG	62244-6
OBSOLETE		3.30[.130] MAX	0.75-1.5mm <sup>2</sup> [#18-#16]AWG	62244-5
	TIN PLATE	3.30[.130] MAX	0.75-1.5mm <sup>2</sup> [#18-#16]AWG	62244-3
	FINISH	INSULATION BARREL DIA	WIRE BARREL RANGE	PART NO

F OR O	3.94 [.155]	6.22 [.245]	F	2.79 [.110]	2.01 [.079]	1.5mm <sup>2</sup> [16]
					1.85 [.073]	.75mm <sup>2</sup> [18]
TYPE	WIDTH	STRIP LENGTH ±0.38 [±0.015]	TYPE	WIDTH	±0.051±[.002] HEIGHT	WIRE
INSUL BARREL CRIMP			WIRE BARREL CRIMP			



THIS DRAWING IS A CONTROLLED DOCUMENT. DIM: SCHRUM 2/20/90  
 DW: FIEHER 2/22/90  
 JMC: FINER 3/5/90  
 T L SHUTTER  
 PRODUCT SPEC: 108-2008  
 APPLICATION SPEC: 114-2019  
 HEIGHT: -

Ytyco Electronics Corporation  
 Harrisburg, PA 17105-3608

RECEPTACLE, CLUSTER PIN,  
 3.18[.125] DIA

SIZE: CASE CODE: DRAWING NO: A2 00779 C=62244  
 CUSTOMER DRAWING SCALE: 5:1 SHEET: 1 of 1 REV: AA3

1471-9 (1/08)

62244

A