

4

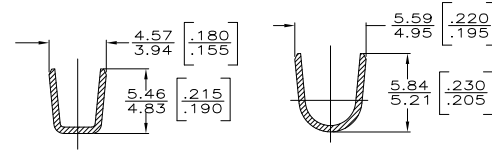
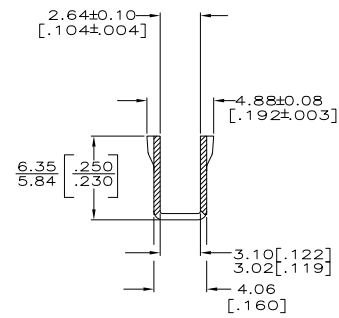
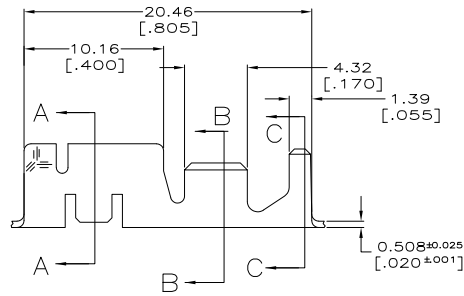
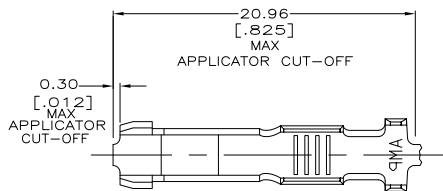
3

2

1

THIS DRAWING IS UNPUBLISHED. RELEASED FOR PUBLICATION.
 © COPYRIGHT BY TYCO ELECTRONICS CORPORATION. ALL INTERNATIONAL RIGHTS RESERVED.

LOC	DIST	REVISIONS			
F	LN	DESCRIPTION	DATE	BY	APPD
AF	50				
	AA1	REVISED PER ECR-09-011035	22MAY09	HMR	GJ



1 CONTINUOUS STRIP ON REELS WITH TERMINALS
 LOCATED ON 22.61[.890] CENTERS

△ SPECIAL PACKAGING

F OR O	4.57 [.180]	6.22 [.245]	F	3.56 [.140]	2.97[.117]	5.0mm ² [10]
					2.54[.100]	3.0mm ² [12]
					2.24[.088]	2.0mm ² [14]
TYPE	WIDTH	STRIP LENGTH 0.38 [±.015]	TYPE	WIDTH	±0.051±[.002] HEIGHT	WIRE
INSUL BARREL CRIMP			WIRE BARREL CRIMP			

METRIC

4.32[.170] MAX	2.0-5.0mm ² [#14-#10]AWG	△ 62243-5
4.32[.170] MAX	2.0-5.0mm ² [#14-#10]AWG	62243-3
INSULATION BARREL DIA		WIRE BARREL RANGE
		PART NO
THIS DRAWING IS A CONTROLLED DOCUMENT. DWK SCHUBM 2/20/90 CWK 2/22/90 MJC FEHNER 3/5/90 JPC DE DECKER PRODUCT SPEC 108-2008 APPLICATION SPEC 114-2019 HEIGHT -		
DIMENSIONS: mm [INCHES]		TYCO ELECTRONICS CORPORATION HARRISBURG, PA 17105-3608
TOLERANCES UNLESS OTHERWISE SPECIFIED: 0 PLG ± - 1 PLG ± - 2 PLG ± - 3 PLG ± 0.38(.015) 4 PLG ± - ANGLES ± -		RECEPTACLE, CLUSTER PIN, 3.18[.125] DIA
MATERIAL: H03 HARD PHOSPHOR BRONZE	FINISH: TIN PLATED	RESTRICTED TO: -
CUSTOMER DRAWING		SIZE: A2 CAGE CODE: 00779 DRAWING NO: C-62243 SCALE: 5:1 SHEET: 1 of 1 REV: AA1

1471-9 (1/08)

62243

A