

4

3

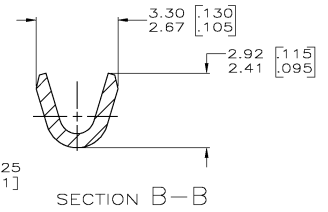
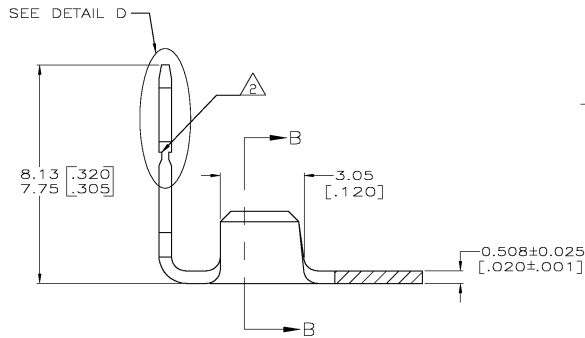
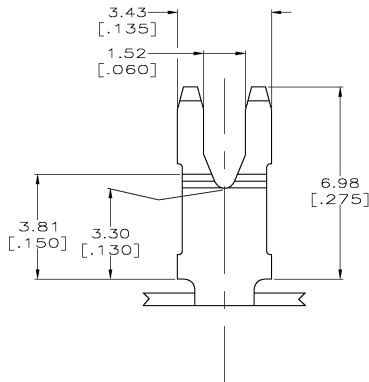
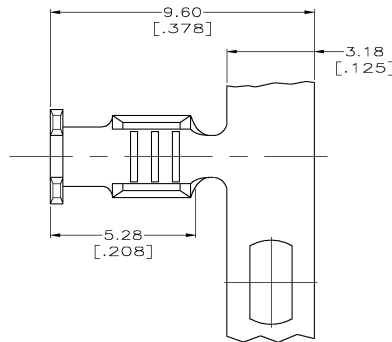
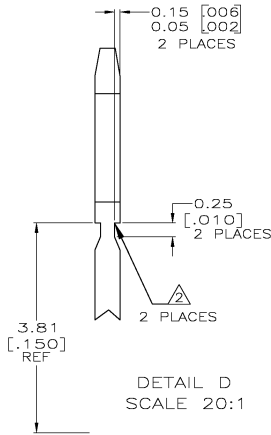
2

1

THIS DRAWING IS UNPUBLISHED. RELEASED FOR PUBLICATION
 © COPYRIGHT BY TYCO ELECTRONICS CORPORATION. ALL RIGHTS RESERVED.

LOC	DIST	REVISIONS					
		P	LTR	DESCRIPTION	DATE	OWN	APPD
AF	50	G		REVISED PER 063A-0750-02	18DEC02	MF	KR

1 CONTINUOUS STRIP ON REELS WITH TERMINALS LOCATED ON 9.14 ± 0.08 [.360 ± .003] CENTERS.
 ▲ FOR OPTIMUM RETENTION FORCE IN POKE-IN TYPE MAG-MATE TERMINALS, ONE OF THE SERRATIONS AS SHOWN MUST BE ENGAGED WITH THE EDGE OF THE LEAF.



0.3-0.8mm ² [#22-18 AWG]	63410-1
WIRE RANGE	PART NUMBER

THIS DRAWING IS A CONTROLLED DOCUMENT.		DRW: J.R. RUTH 15ND091	Tyco Electronics Corporation	
DIMENSIONS: TO RANGE UNLESS OTHERWISE SPECIFIED.		CHK: MICHAEL S. FEHLER 15ND091	Horriaburg, PA 17105-3608	
MM	0 P.L.C. ±	APP: KURT A. RANDOLPH 15ND091	NAME: -	
	1 P.L.C. ±	PROD: 108-22055	TAB, POKE-IN, MAG-MATE™	
	2 P.L.C. ±	APPL: 114-2050	SEE DATE CODE DRAWING NO	
	3 P.L.C. ±	FIN: 0.000381 [.000015]	RESTRICTED TO	
	4 P.L.C. ±	FIN: MIN PRE-TIN PLATE	A2 00779 © 63410	
MATERIAL:	0.000381 [.000015]	RIGHT: CUSTOMER DRAWING	SCALE: 10:1	SHEET 1 OF 1
FINISH:	MIN PRE-TIN PLATE			REV G

AMP 1431-9 REV 31 MAR 2000

63410

A