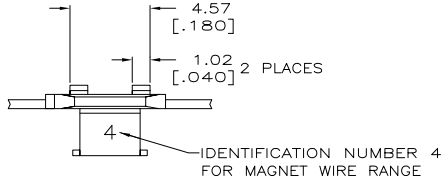
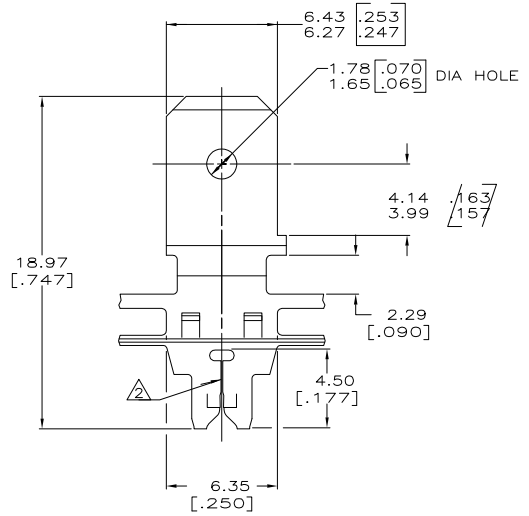
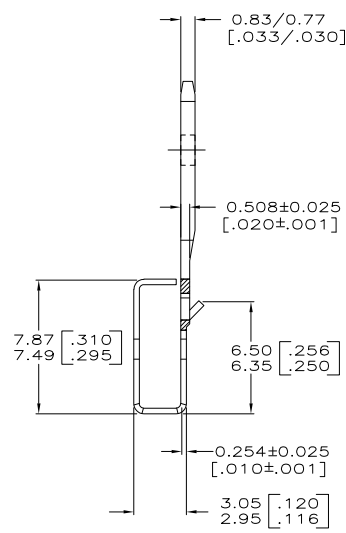
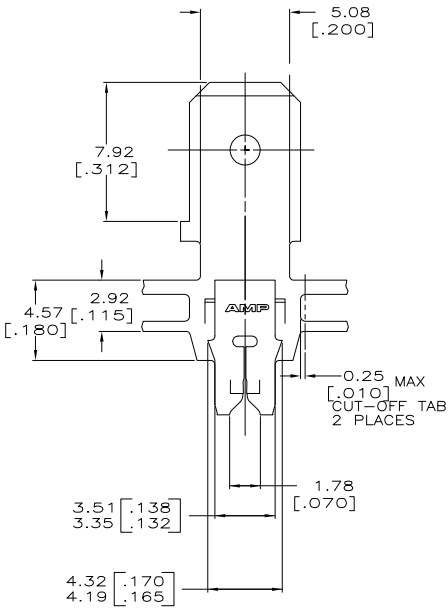


THIS DRAWING IS UNPUBLISHED. RELEASED FOR PUBLICATION .19  
 © COPYRIGHT 19 BY AMP INCORPORATED. ALL INTERNATIONAL RIGHTS RESERVED.

LOC		DIST		ZONE		LTR		REVISIONS		DATE	APPD
AF	50	P	F					F	REV PER ECR 06-010492		JR/KR



1 CONTINUOUS STRIP ON REELS WITH TERMINALS LOCATED ON  $8.38 \pm 0.08$  [.330 ± .003] CENTERS.  
 △ SLOT ACCEPTS 0.18-0.23mm [#33-#31] AWG COPPER MAGNET WIRE.  
 2 WIRES OF THE SAME SIZE MAX PER SLOT.



082 PRE-MILLED BRASS	63309-2
4M PRE-MILLED BRASS	63309-1
MATERIAL	PART NO

DO NOT SCALE PRINT. UNLESS SPECIFIED DIMENSIONS IN mm [INCHES] TOLERANCES ON : 2 PLC DEC ± 0.25 [010] 3 PLC DEC ± - ANGLES ± -	DR 10/AUG/94 MICHAEL S. FEHER	AMP Incorporated Harrisburg, PA 17105-3608
MATERIAL SEE TABLE	CHK 12/AUG/94 RAYMOND R. BUCHHEISTER JR	
FINISH 0.002032 [.000080] MIN TIN PER MIL-T-10727	APPD 15/AUG/94 TERRY L. SHUTTER	NAME TAB, 6.35 [.250] FASTON, MAG-MATE
APPLICATION SPEC 114-2094	PRODUCT SPEC 108-2012	SIZE CAGE CODE DRAWING NO C-63309
WEIGHT -	SCALE 6:1	SHEET 10F 1

THIS DRAWING IS A CONTROLLED DOCUMENT FOR AMP INCORPORATED. IT IS SUBJECT TO CHANGE AND THE CONTROLLING ENGINEERING ORGANIZATION SHOULD BE CONTACTED FOR THE LATEST REVISION.

AMP 1471-6 REV 3-92 Transmitted 020830.163814 (YYMMDDHHMMSS) from Computerized, Inc., Medium Revision 12.2.97

CUSTOMER DRAWING

63309

A