

4

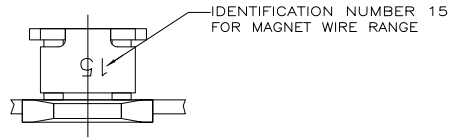
3

2

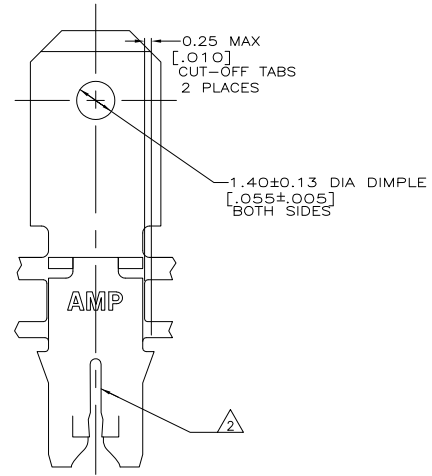
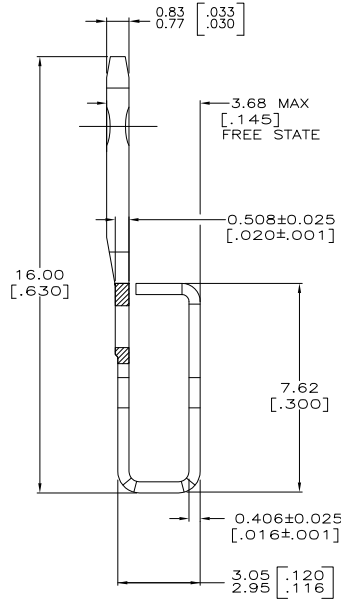
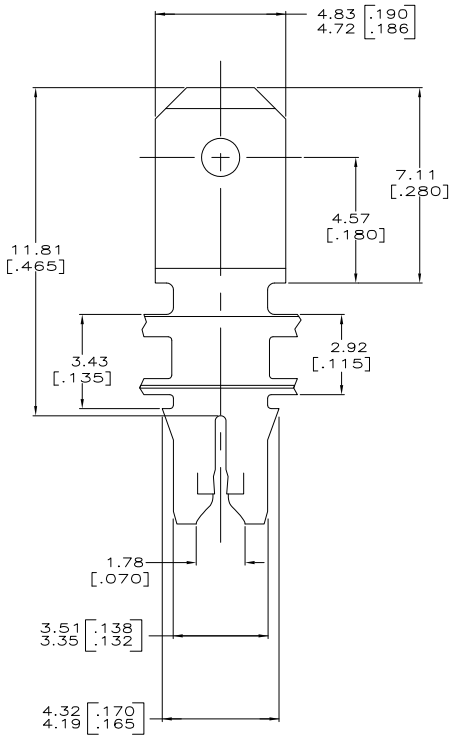
1

THIS DRAWING IS UNPUBLISHED. RELEASED FOR PUBLICATION  
 © COPYRIGHT BY TYCO ELECTRONICS CORPORATION. ALL RIGHTS RESERVED.

LOC		DIBT		REVISIONS			
F	LTR	DESCRIPTION	DATE	BY	APP'D		
AF	50	D	REVISED PER ECR-06-010412	26OCT06	HMR	KR	



- CONTINUOUS STRIP ON REELS WITH TERMINALS LOCATED ON  $5.59 \pm 0.08$   $[\pm 0.220 \pm 0.003]$  CENTERS.
- SLOT ACCEPTS A SINGLE WIRE MAX OF  $0.64 - 0.81$ mm  $[\#22 - \#20]$  AWG COPPER MAGNET WIRE.
- AFTER INSERTION INTO PLASTIC HOLDER TAB PORTION MUST BE BENT OVER  $45^\circ$  TO  $90^\circ$  OR POTTED-IN TO PREVENT PULL-OUT WHEN MATING RECEPTACLE IS DISCONNECTED.



1217065-1  
 PART NUMBER

THIS DRAWING IS A CONTROLLED DOCUMENT.		DRN R. GRZYBOWSKI 20FEB99	Tyco Electronics Corporation Harrisburg, PA 17105-3608	
DIMENSIONS: mm [INCHES]		CHK M. S. FISHER 20FEB99	TERMINAL, TAB 4.75[.187] FASTON™ MAG-MATE™	
TOLERANCES UNLESS OTHERWISE SPECIFIED: 0 PLG ± .010 1 PLG ± .010 2 PLG ± .010 3 PLG ± .010 4 PLG ± .010 ANGLES ± .5°		APPC N.E. NEFF 20FEB99	RESTRICTED TO	
MATERIAL ORB PRE-MILLED BRASS		PRODUCT SPEC 108-2012	SIZE A2	CAGE CODE 00779
FINISH 0.002032[.000080] MIN TN		APPLICATION SPEC 114-2046	DRAWING NO C=1217065	
		WEIGHT	SCALE 10:1	
		CUSTOMER DRAWING		SHEET 1 of 1
				REV D

AMP 1471-9 REV 31MM2000

1217065

A