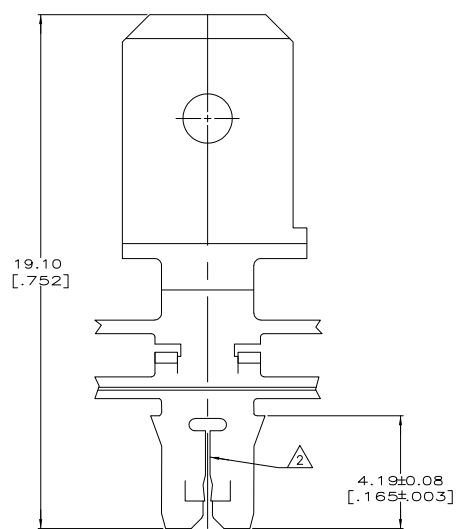
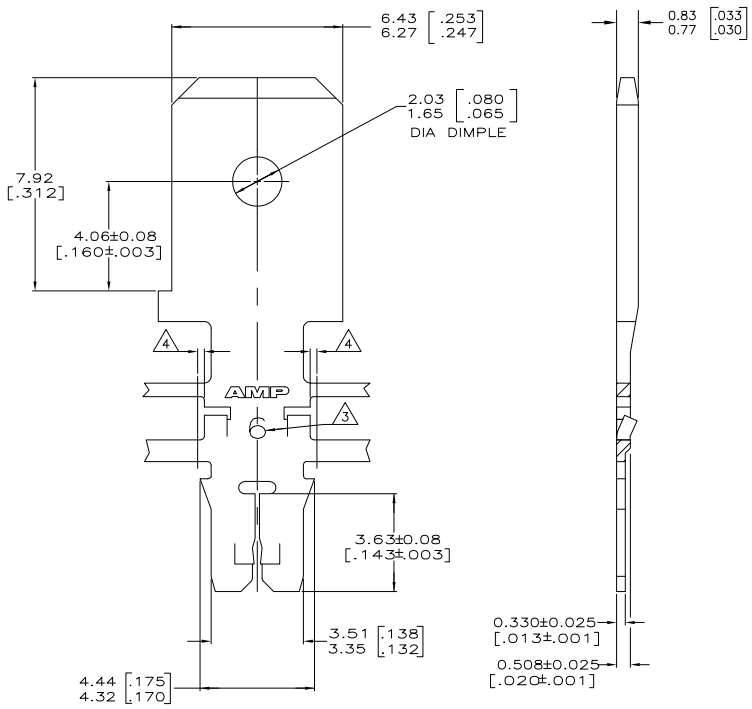


THE DRAWING IS UNPUBLISHED. RELEASED FOR PUBLICATION
 COPYRIGHT BY TYCO ELECTRONICS CORPORATION. ALL RIGHTS RESERVED.

LOC	QST	REVISIONS			
TR	LR	DESCRIPTION	DATE	DR	APP
AF	50	H	REVISED PER ECR-06-010423	22SEP06	HMR KR

- 1 CONTINUOUS STRIP ON REELS WITH TERMINALS LOCATED ON 8.38±0.08 [.330±.003] CENTERS
- ② SLOT ACCEPTS 0.25-0.32mm [#30-#28] AWG COPPER MAGNET WIRE. TWO WIRES OF THE SAME SIZE MAX PER SLOT
- ③ IDENTIFICATION NUMBER 6 FOR THE MAGNET WIRE SLOT SIZE
- ④ 0.25 [.010] MAX CARRIER CUT-OFF TABS.



OBSOLETE	082 PRE-MILLED BRASS	63743-2
	AM PRE-MILLED BRASS	63743-1

THIS DRAWING IS A CONTROLLED DOCUMENT.		DN	L.A. MAYER	9-1-83	Tyco Electronics Corporation Harrisburg, PA 17105-3608
DIMENSIONS: TO DIMENSIONS UNLESS OTHERWISE SPECIFIED:		DR	M.S. FEHER	9-1-83	
mm [INCHES]		APR	A. HUNT III	9-1-83	MAG-MATE™ Slim Line
Ø P/C	±	PRODUC SPEC	108-1484		
1 P/C	± 0.13 [.005]	APPLICATION SPEC	114-2140		RESTRICTED TO
2 P/C	±	WEIGHT			
3 P/C	±	FINISH	0.002032 [.000080] MIN TIN PLATE		
4 P/C	±	MATERIAL	SEE TABLE		
ANGLES	±	CUSTOMER DRAWING			
		SCALE	10:1	SHEET	1 of 1
		DRAWING NO	A2 00779	REV	H
		CAGE CODE	00779		
		DATE	06/22/06		

AMP 1471-B REV 31MM2000