

4

3

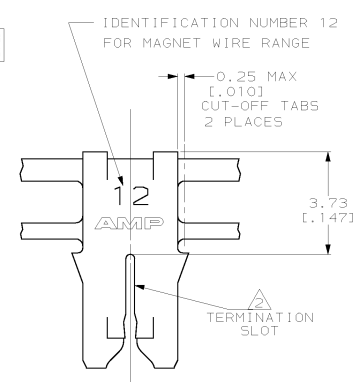
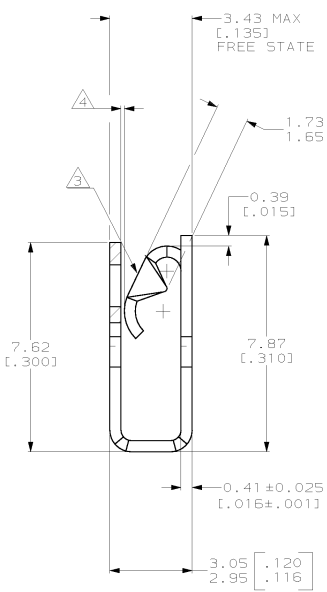
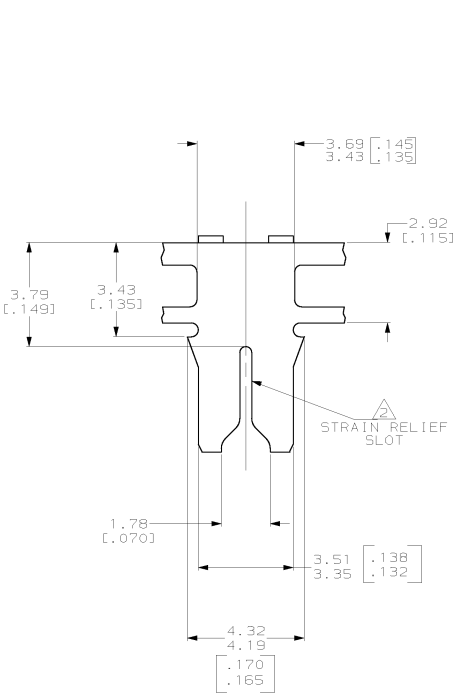
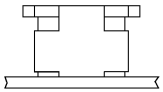
2

1

THIS DRAWING IS UNPUBLISHED. RELEASED FOR PUBLICATION. BY AMP INCORPORATED. ALL RIGHTS RESERVED.

REV	DATE	BY	CHK	DESCRIPTION
AF	50	B		REVISED PER DG3A-0047-02

- 1 CONTINUOUS STRIP ON REELS WITH TERMINALS LOCATED ON 5.59±0.08 [0.220±0.003] CENTERS
- △ SLOT ACCEPTS A 0.43-0.51mm [#25.5-#24] AWG COPPER MAGNET WIRE.
- △ MATES WITH STANDARD MAG-MATE STYLED POKE-IN TAB TERMINAL.
- △ WHEN FREE STATE IS COMPRESSED TO 3.23 [0.127] DIMENSION GAP BETWEEN SPRING AND CARRIER IS TO BE 0.30 [0.012] MAX.
- △ 0.002032 [0.000080] MIN TIN OVER 0.00127 [0.000050] MIN NICKEL UNDERPLATE.
- △ ANTI-FRETTING LUBRICANT APPLIED.
- △ 0.00382 [0.000150] MIN SILVER PLATE OVER 0.00127 [0.000050] MIN NICKEL UNDERPLATE.
- △ PRELIMINARY - NOT FOR PRODUCTION.



FINISH	MATERIAL	PART NUMBER
△	4M BRASS	△ 1217690-4
△	H04 PHOSPHOR BRONZE	△ 1217690-3
△	4M BRASS	△ 1217690-2
△	4M BRASS	1217690-1

THIS DRAWING IS A CONTROLLED DOCUMENT.		DRW: MICHAEL S. FEJER 10/21/2001	AMP Incorporated Harrisburg, PA 17105-3608
DIMENSIONS: mm (INCHES)		CHK: KURT A. RANDOLPH 10/21/2001	
TOLERANCES UNLESS SPECIFIED:		APPV: KURT A. RANDOLPH 10/21/2001	
Ø	PLC	±.005	<b>SPECIAL LEAF CONTACT, 300 SERIES MAG-MATE™</b>
Ø	PLC	±.002	
Ø	PLC	±.001	
Ø	PLC	±.0005	
Ø	PLC	±.001	NAME: 108-2012 APPLICATION SPEC: 114-2046 RETWORK: -
Ø	PLC	±.001	CASE CODE (DRAWING NO): A200779 CUSTOMER DRAWING: 1217690
Ø	PLC	±.001	SCALE: 10:1 SHEET: 1 OF 1 REV: B