

4

3

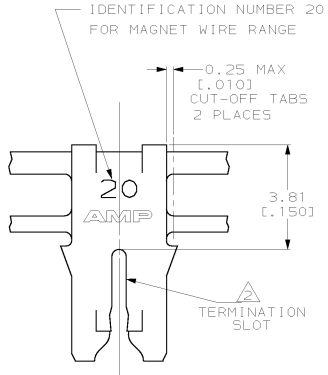
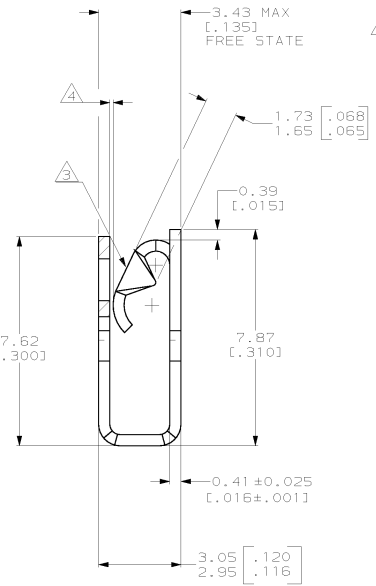
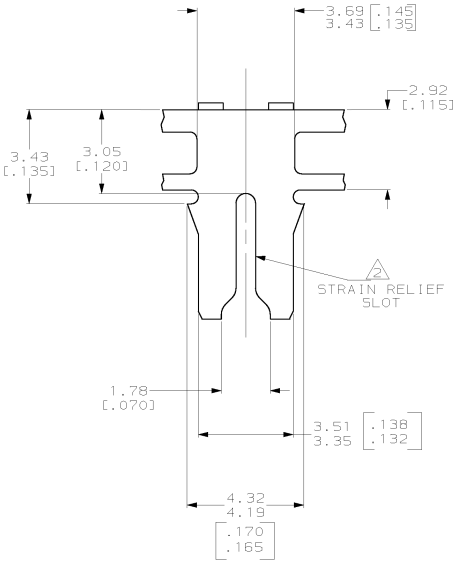
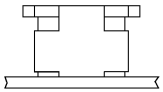
2

1

THIS DRAWING IS UNPUBLISHED.
 RELEASED FOR PUBLICATION
 BY AMP INCORPORATED. ALL RIGHTS RESERVED.

REV	DATE	BY	CHK	DESCRIPTION
1	05FEB02	MF	KR	REVISED PER DG3A-0047-02

- 1 CONTINUOUS STRIP ON REELS WITH TERMINALS LOCATED ON 5.59±0.08 [.220±.003] CENTERS
- △ SLOT ACCEPTS A 0.68-0.81mm [#21.5-#20] AWG COPPER MAGNET WIRE.
- △ MATES WITH STANDARD MAG-MATE STYLED POKE-IN TAB TERMINAL.
- △ WHEN FREE STATE IS COMPRESSED TO 3.23 [.127] DIMENSION GAP BETWEEN SPRING AND CARRIER IS TO BE 0.30 [.012] MAX.
- △ 0.002032 [.000080] MIN TIN OVER 0.00127 [.000050] MIN NICKEL UNDERPLATE.
- △ ANTI-FRETTING LUBRICANT APPLIED.
- △ 0.00382 [.000150] MIN SILVER PLATE OVER 0.00127 [.000050] MIN NICKEL UNDERPLATE.
- △ PRELIMINARY - NOT FOR PRODUCTION.



FINISH	MATERIAL	PART NUMBER
△	4M BRASS	△ 1217688-4
△	H04 PHOSPHOR BRONZE	△ 1217688-3
△	4M BRASS	△ 1217688-2
△	4M BRASS	1217688-1

THIS DRAWING IS A CONTROLLED DOCUMENT.		DRW: MICHAEL S. FEJER 12072001	AMP Incorporated Harrisburg, PA 17105-3608
DIMENSIONS: mm (INCHES)		CHK: KURT A. RANDOLPH 12072001	
TOLERANCES UNLESS SPECIFIED:		APPV: KURT A. RANDOLPH 12072001	
Ø	PLC	±.005	SPECIAL LEAF CONTACT, 300 SERIES MAG-MATE™
Ø	PLC	±.01	
Ø	PLC	±.015	
Ø	PLC	±.025 (Ø.010)	
Ø	PLC	±.03	NAME: 108-2012 PRODUCT SPEC: APPLICATION SPEC: 114-2046 RET: -
MATERIAL: SEE TABLE	FINISH: SEE TABLE	CUSTOMER DRAWING	SCALE: 10:1 SHEET: 1 OF 1 REV: B

1217688

A