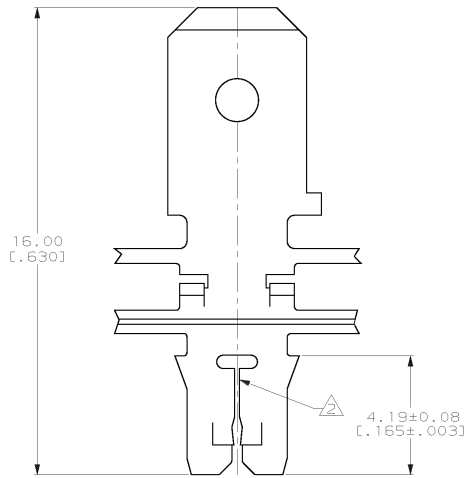
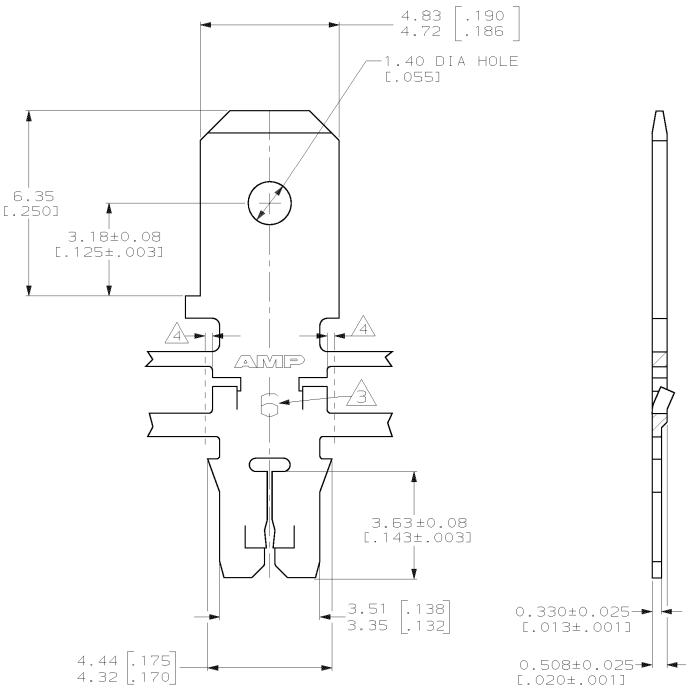


THIS DRAWING IS UNPUBLISHED. RELEASED FOR PUBLICATION, 19
 © COPYRIGHT 19 BY AMP INCORPORATED. ALL INTERNATIONAL RIGHTS RESERVED.

LOC		DIST		ZONE		LTR		REVISIONS			
AF	50	P	F					DESCRIPTION	DATE	APPO	
								F	REVISED PER 063A-0034-01		

- 1 CONTINUOUS STRIP ON REELS WITH TERMINALS LOCATED ON 6.86±0.08 [.270±.003] CENTERS
- 2 SLOT ACCEPTS 0.25-0.32mm [#30-#28] AWG COPPER MAGNET WIRE. TWO WIRES OF THE SAME SIZE MAX PER SLOT
- 3 IDENTIFICATION NUMBER 6 FOR THE MAGNET WIRE SLOT SIZE
- 4 0.25[.010] MAX CARRIER CUT-OFF TABS



OBSOLETE		082 PRE-MILLED BRASS	63711-2
		AM PRE-MILLED BRASS	63711-1
		MATERIAL	PART NO
DO NOT SCALE PRINT. UNLESS SPECIFIED DIMENSIONS IN MM (INCHES) TOLERANCES ON ± 2 PL/C DEC ± 0.13 (.005) 3 PL/C DEC ± - ANGLES ± -		AMP Incorporated Harrisburg, PA 17105-3608	
SEE TABLE		NAME TAB, 4.75 [.187] FASTON™ MAG-MATE™ Slim Line	
FINISH 0.002032 [.000080] MIN TIN		SIZE C 00779	DRAWING NO C-63711
DR 9-27-93 L.A. MAYER CHK 9-27-93 M.S. FEHER APPD 9-27-93 A.HUNT III T.L. SHUTTER		APPLICATION SPEC 114-2140	SCALE 10:1
MATERIAL		PRODUCT SPEC 108-1484	SHEET 1 OF 1
WEIGHT -		CUSTOMER DRAWING	

THIS DRAWING IS A CONTROLLED DOCUMENT FOR AMP INCORPORATED. IT IS SUBJECT TO CHANGE AND THE CONTROLLING ENGINEERING ORGANIZATION SHOULD BE CONTACTED FOR THE LATEST REVISION.

63711

A