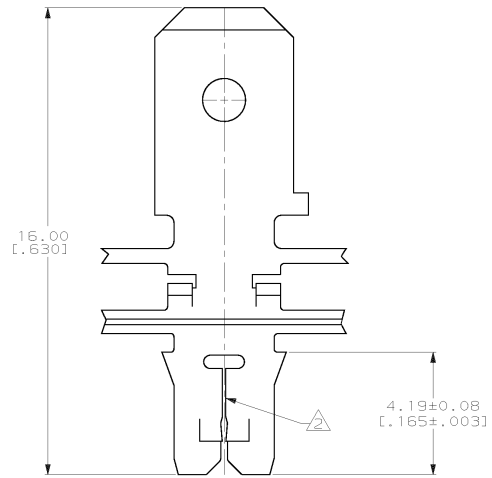
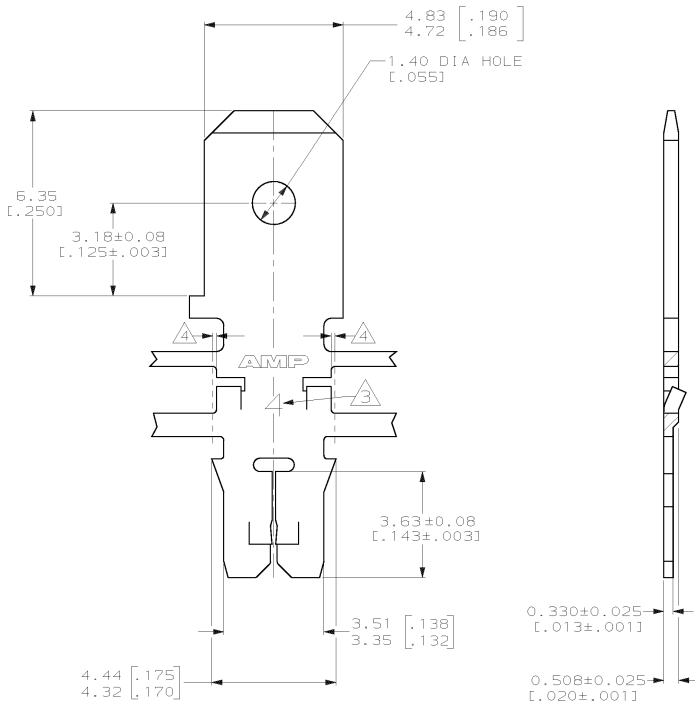


THIS DRAWING IS UNPUBLISHED. RELEASED FOR PUBLICATION, 19
 © COPYRIGHT 19 BY AMP INCORPORATED. ALL INTERNATIONAL RIGHTS RESERVED.

| LOC | | DIST | | ZONE | | LTR | | REVISIONS | | | |
|-----|----|------|---|------|--|-----|--|-------------|--------------------------|---------|-------|
| AF | 50 | P | F | | | | | DESCRIPTION | DATE | APPO | |
| | | | | | | | | F | REVISED PER 063A-0034-01 | 09FEB01 | HF-KR |

- 1 CONTINUOUS STRIP ON REELS WITH TERMINALS LOCATED ON 6.86±0.08 [.270±.003] CENTERS
- ② SLOT ACCEPTS 0.18-0.23mm [#33-#31] AWG COPPER MAGNET WIRE. TWO WIRES OF THE SAME SIZE MAX PER SLOT
- ③ IDENTIFICATION NUMBER 4 FOR THE MAGNET WIRE SLOT SIZE
- ④ 0.25[.010] MAX CARRIER CUT-OFF



| | | | |
|---|---|---|--------------|
| | OBSELETE | 082 PRE-MILLED BRASS | 63710-2 |
| | | AM PRE-MILLED BRASS | 63710-1 |
| | | MATERIAL | PART NO |
| DO NOT SCALE PRINT. UNLESS SPECIFIED DIMENSIONS IN mm (INCHES) TOLERANCES ON ± 2 PL/C DEC ± 0.13 (.005) 3 PL/C DEC ± - ANGLES ± - | DR 9-27-93 L.A. MAYER CHK 9-27-93 M.S. FEHER APPD 9-27-93 A. HUNT III | AMP Incorporated Harrisburg, PA 17105-3608 | |
| MATERIAL SEE TABLE | APPD 9-27-93 T.L. SHUTTER PRODUCT SPEC 108-1484 | NAME TAB, 4.75 [.187] FASTON™ MAG-MATE™ Slim Line | |
| FINISH 0.002032 [.000080] MIN TIN | APPLICATION SPEC 114-2140 | SIZE CAGE CODE DRAWING NO C 00779 C-63710 | |
| | WEIGHT - | SCALE 10:1 | SHEET 1 OF 1 |

THIS DRAWING IS A CONTROLLED DOCUMENT FOR AMP INCORPORATED. IT IS SUBJECT TO CHANGE AND THE CONTROLLING ENGINEERING ORGANIZATION SHOULD BE CONTACTED FOR THE LATEST REVISION.