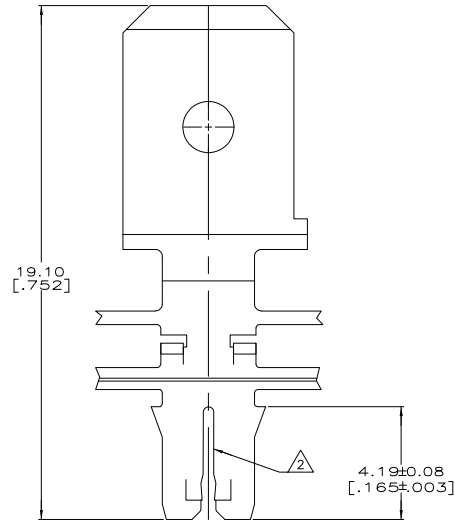
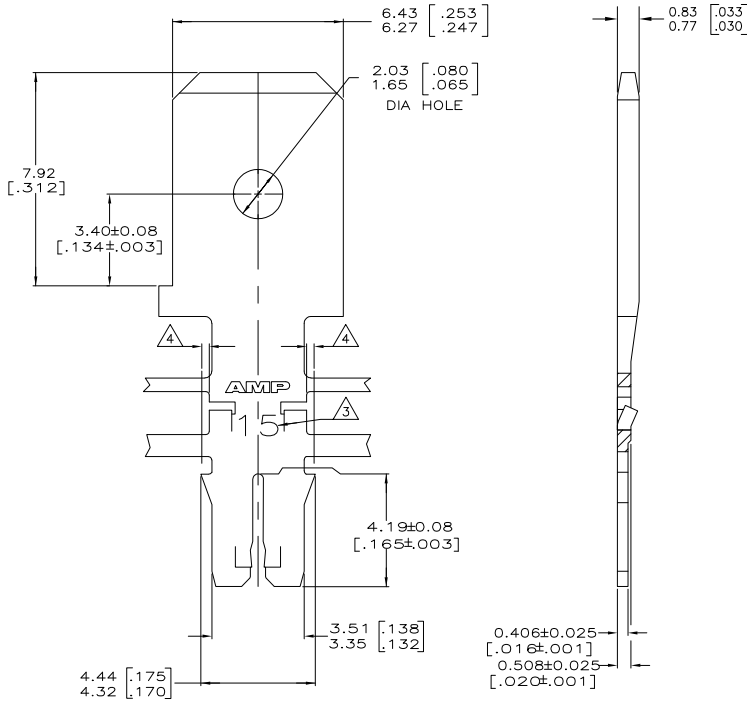


THIS DRAWING IS UNPUBLISHED. RELEASED FOR PUBLICATION
 © COPYRIGHT BY TYCO ELECTRONICS CORPORATION. ALL RIGHTS RESERVED.

LOC	QST	REVISIONS				
AF	50	TR	LR	DATE	DRN	APD
		J		REVISED PER ECR-06-010423	21SEP06	HMR KR

- 1 CONTINUOUS STRIP ON REELS WITH TERMINALS LOCATED ON 8.38±0.08 [.330±.003] CENTERS
- 2 SLOT ACCEPTS 0.57-0.81mm [#23-#20] AWG COPPER MAGNET WIRE. TWO WIRES OF THE SAME SIZE MAX PER SLOT FOR #23 GAGE. ONE WIRE MAX PER SLOT FOR #22-#20 AWG
- 3 IDENTIFICATION NUMBER 15 FOR THE MAGNET WIRE SLOT SIZE
- 4 0.25[.010] MAX CARRIER CUT-OFF TABS



OBSOLETE	082 PRE-MILLED BRASS	63719-2
	4M PRE-MILLED BRASS	63719-1
	MATERIAL	PART NO

THIS DRAWING IS A CONTROLLED DOCUMENT.		DN	9-27-83	Tyco Electronics Corporation Harrisburg, PA 17105-3608
		L.A. MAYER	9-27-83	
DIMENSIONS: TO DIMENSIONS UNLESS OTHERWISE SPECIFIED:		DN	9-27-83	Tyco Electronics Corporation
		M.S. FEHER	9-27-83	
mm [INCHES]		APD	9-27-83	MAG-MATE™ Slim Line
		A. HUNT III	9-27-83	
TOLERANCES:		PRODUCT SPEC	108-1484	TAB, 6.35 [.250] FASTON™
Ø P/IC ± .01		APPLICATION SPEC	114-2140	
H P/IC ± .013 [.005]		WEIGHT	-	RESTRICTED TO
F P/IC ± .01		SIZE	A2	00779
M P/IC ± .01		SCALE	10:1	63719
FINISH		CUSTOMER DRAWING		
0.002532 [.000090]				
MIN TN PLATE				

AMP 1471-B REV 31MMR2000

63719

A